



Rickyard Walk

Grange Park, Northampton

oriordanbond
SALES & LETTINGS



Rickyard Walk

Grange Park
NN4 5BD

Guide Price
£325,000

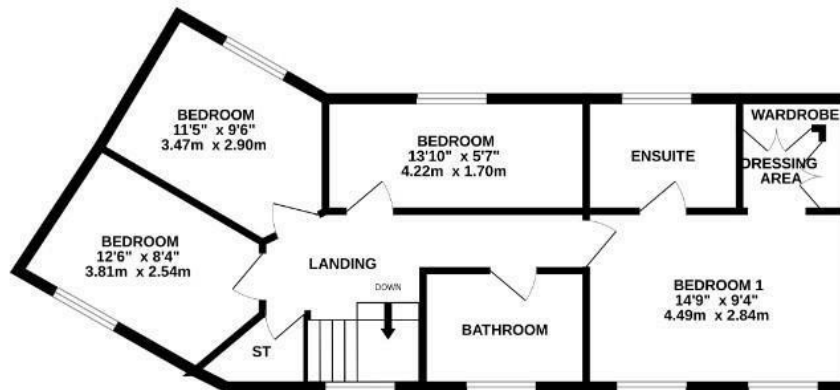
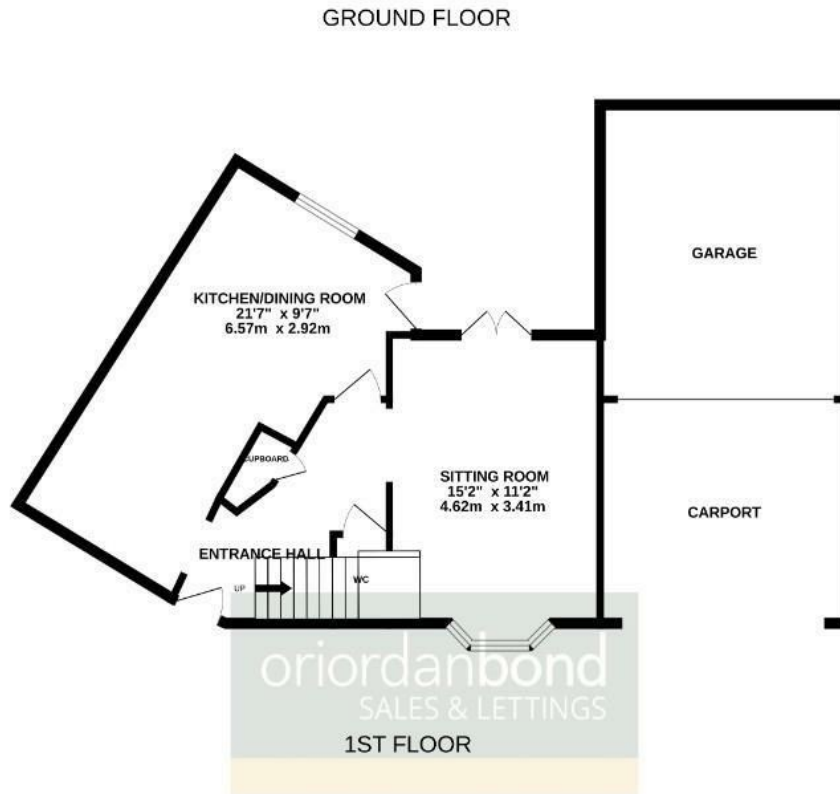
A modern four bedroom family home offered for sale in good decorative order throughout. The property provides good access to Foxfield Country Park, Woodland View Primary School as well Junction 15 for the M1 and A45.

The accommodation comprises entrance hall, cloakroom/WC, sitting room, kitchen/dining room, four well proportioned first floor bedrooms with en-suite to the master and a family bathroom. Outside is a lawned front garden, an enclosed low maintenance rear garden with artificial lawn and decked seating area and a carport with off road parking and single garage. Further benefits include uPVC double glazing and gas radiator heating. (B/1011/S)

- Modern four bedroom family home
- En-suite to master bedroom
- Kitchen/dining room
- Gas radiator heating
- Enclosed low maintenance rear garden
- Off road parking. carport and garage







TOTAL FLOOR AREA - 1011sq.ft. (93.9 sq.m.) approx.

Whilst every attempt has been made to ensure the accuracy of the floorplan contained here, measurements of doors, windows, rooms and any other items are approximate and no responsibility is taken for any error, omission or mis-statement. This plan is for illustrative purposes only and should be used as such by any prospective purchaser. The services, systems and appliances shown have not been tested and no guarantee as to their operability or efficiency can be given.
Made with Metropix ©2024



Additional information

- Council Tax Band: D
- Energy Efficiency Rating: C

Viewing

Viewing strictly by appointment – details below

Disclaimer

O'Riordan Bond Estate Agents Limited has not tested apparatus, equipment, fittings or services and so cannot verify they are in working order. The buyer is advised to obtain verification from their solicitor or surveyor.

O'Riordan Bond Grange Park Sales

01604 432007

grangepark@oriordanbond.co.uk

