



# Resthaven Road

Wootton Village, Northampton

oriordanbond  
SALES & LETTINGS



## Resthaven Road

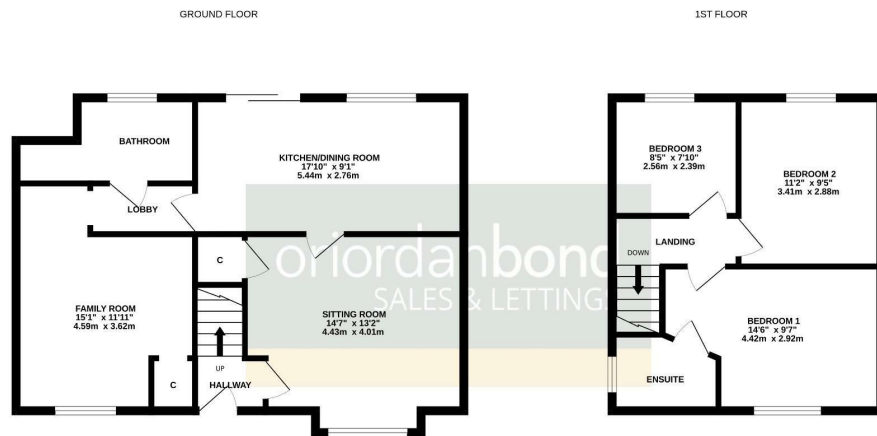
Wootton Village

NN4 6LR

PRICE £280,000

**A three bedroom end terraced family home situated in the heart of Wootton village. Offered for sale with no onward chain, the property is located close to Wootton Primary School and the A45.**

The accommodation comprises entrance hall, sitting room, kitchen/dining room, family room and bathroom. To the first floor are three bedrooms with en-suite to the master. Outside are low maintenance gardens to the front and rear and off road parking. Further benefits include uPVC double glazing and gas radiator heating. (B/986/S)



TOTAL FLOOR AREA: 986 sq.ft. (91.6 sq.m.) approx.

Whilst every attempt has been made to ensure the accuracy of the floorplan contained here, measurements of doors, windows, rooms and any other items are approximate and no responsibility is taken for any error, omission or mis-statement. This plan is for illustrative purposes only and should be used as such by any prospective purchaser. The services, systems and appliances shown have not been tested and no guarantee as to their operability or efficiency can be given.  
Made with Metrepro 02024

### Additional information

- Council Tax Band: B
- Energy Efficiency Rating: D

### Viewing

Viewing strictly by appointment – details below

### Disclaimer

O'Riordan Bond Estate Agents Limited has not tested apparatus, equipment, fittings or services and so cannot verify they are in working order. The buyer is advised to obtain verification from their solicitor or surveyor.

O'Riordan Bond Grange Park Sales  
01604 432007

grangepark@oriordanbond.co.uk

