



Badger Lane

Grange Park, Northampton

oriordanbond
SALES & LETTINGS



Badger Lane

Grange Park
NN4 5DH

OFFERS OVER £280,000

This improved three bedroom town house is ideally located in the popular Grange Park development and within close proximity of Foxfield Country Park, Woodland View Primary school, shops and other amenities.

Accommodation comprises entrance hall, cloakroom/WC, kitchen and dining room, first floor landing, double bedroom, sitting room and a re-fitted shower room, second floor landing, two further double bedrooms and a re-fitted family bathroom. The property fronts onto a laid to lawn garden with mature trees and a driveway to the side of the property leading to a single garage with power and light connected. The rear garden is mainly laid to lawn with a timber retaining fence. Further benefits include uPVC double glazing and gas radiator heating. (B/1073/S)

Additional information

- Council Tax Band: D
- Energy Efficiency Rating: C

Viewing

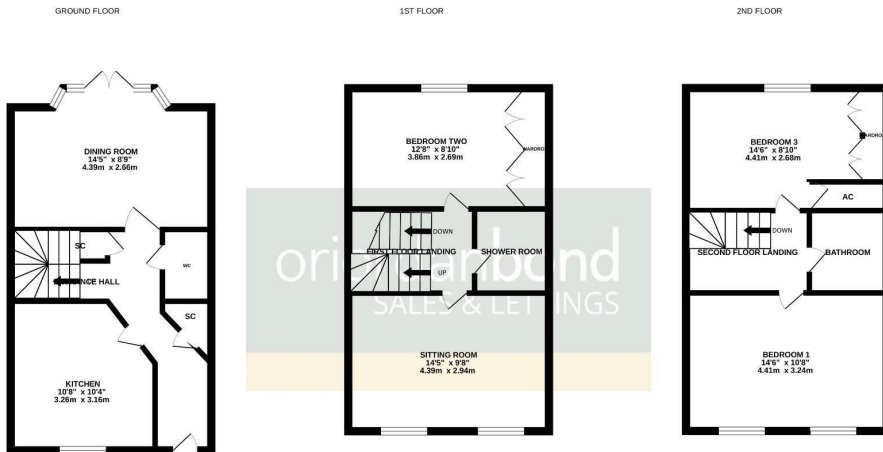
Viewing strictly by appointment – details below

Disclaimer

O’Riordan Bond Estate Agents Limited has not tested apparatus, equipment, fittings or services and so cannot verify they are in working order. The buyer is advised to obtain verification from their solicitor or surveyor.

O’Riordan Bond Grange Park Sales
01604 432007

grangepark@oriordanbond.co.uk



TOTAL FLOOR AREA - 1073 sq.ft. (99.7 sq.m.) approx.
Whilst every attempt has been made to ensure the accuracy of the floorplan contained here, measurements of doors, windows, rooms and any other items are approximate and no responsibility is taken for any error, omission or mis-statement. This plan is for illustrative purposes only and should be used as such by any prospective purchaser. The services, systems and appliances shown have not been tested and no guarantee as to their operability or efficiency can be given.
Made with Metropix c32024

