



Rushdean Road | | Rochester | ME2 2PA

Offers invited £425,000



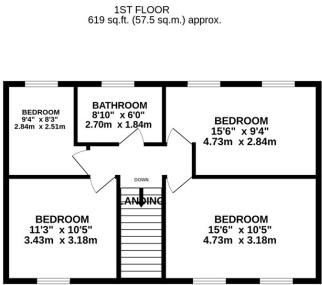
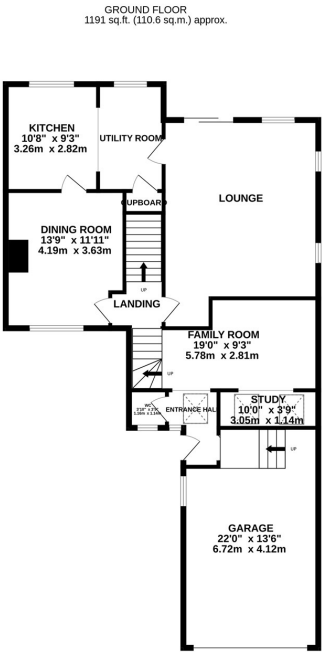
Rushdean Road |
Rochester | ME2 2PA
Offers invited £425,000

Nestled on the charming Rushdean Road in Rochester, this delightful semi-detached house offers a perfect blend of space and comfort. With a generous 1,550 square feet of living area, this property is ideal for families seeking a welcoming home.

The house boasts three well-proportioned reception rooms, providing ample space for both relaxation and entertaining. Whether you envision cosy family gatherings or lively dinner parties, these versatile rooms can easily adapt to your lifestyle. The four bedrooms are thoughtfully designed to ensure a restful retreat for everyone in the household, making it a perfect sanctuary for both children and adults alike.

The property features a single bathroom, which is conveniently located to serve the needs of the household.

- 4 spacious bedrooms
- Semi-detached house
- 1,550 sq ft of space
- Close to local amenities
- Ideal family home
- 3 cosy reception rooms
- Built in 1960
- Located on Rushdean Road
- Easy access to transport
- Viewing recommended



TOTAL FLOOR AREA: 1809 sq.ft. (168.1 sq.m.) approx.
While every attempt has been made to ensure the accuracy of the floorplan contained here, measurements of doors, windows, rooms and any other items are approximate and no responsibility is taken for any error, omission or misstatement. The plan is for illustrative purposes only and should be used as such by any prospective purchaser. The services, systems and appliances shown have not been tested and no guarantee as to their operability or efficiency can be given.
Made with Metropix 02023

Energy Efficiency Rating		
	Current	Potential
Very energy efficient - lower running costs		
(92 plus) A	68	
(81-91) B		
(69-80) C		
(55-68) D		
(39-54) E		
(21-38) F		
(1-20) G		
Not energy efficient - higher running costs		
England & Wales		EU Directive 2002/91/EC

2B Crow Lane
Rochester
Kent
ME1 1RF
01634 829080

admin@machin-lane.co.uk
<https://www.machin-lane.co.uk/>