



Brompton Farm Road | | Rochester | ME2 3NP

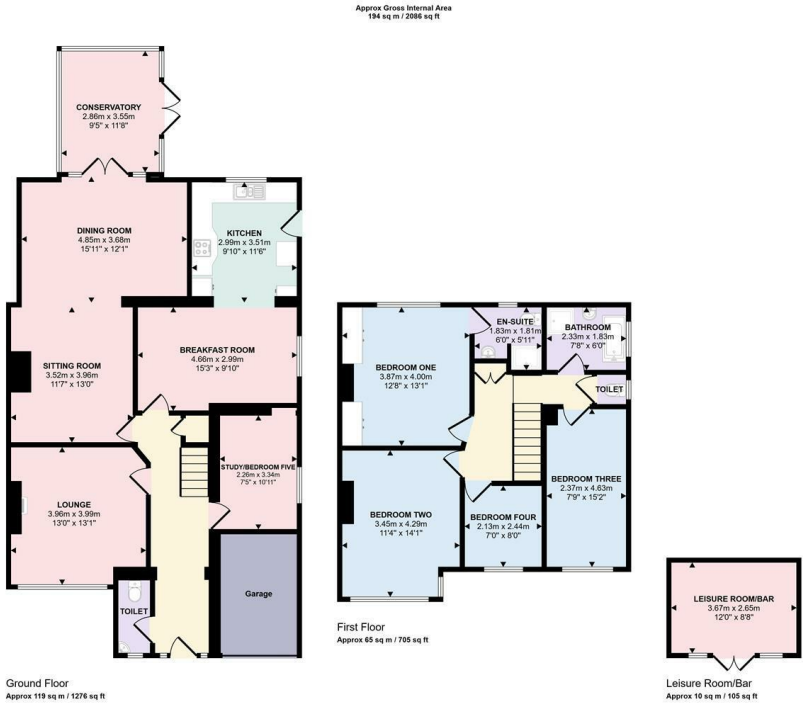
Asking price £675,000



Brompton Farm Road |
Rochester | ME2 3NP
Asking price £675,000

Located in the most sought after Brompton Farm Road, this fabulous family home set on a plot of approximately 0.19 of an acre, has been much extended and improved by the current owners to offer extensive and flexible accommodation. There are five reception rooms, as well as a study/bedroom five on the ground floor with four bedrooms, en-suite and bathroom to the upstairs. The open design of the sitting room and dining room as well as breakfast room and kitchen, makes a great space for the family and entertaining. The front lounge has an attractive brick fireplace with living flame gas fire, the sitting room has an open fireplace and the double glazed conservatory opens onto the terrace and has great views of the long rear garden. The period features are complemented by the expected modern fittings creating a very comfortable home. The house is set on a large plot, with parking for numerous cars and a 200' plus rear garden. The garden has paved and brick block patios ideal for alfresco dining, a long lawn with attractively

- FOUR/FIVE BEDROOMS
- KITCHEN WITH HOB AND OVEN
- FIVE/SIX RECEPTION ROOMS
- EN-SUITE AND FAMILY BATHROOM
- GARAGE & PARKING - 5/6 CARS
- 200' PLUS REAR GARDEN



This floorplan is only for illustrative purposes and is not to scale. Measurements of rooms, doors, windows, and any items are approximate and no responsibility is taken for any error, omission or mis-statement. Icons of items such as bathroom suites are representations only and may not look like the real items. Made with Made Snaggy 360.

Energy Efficiency Rating		
	Current	Potential
Very energy efficient - lower running costs		
(92 plus) A		
(81-91) B		
(69-80) C		
(55-68) D		
(39-54) E		
(21-38) F		
(1-20) G		
Not energy efficient - higher running costs		
England & Wales	EU Directive 2002/91/EC	

2B Crow Lane
Rochester
Kent
ME1 1RF
01634 829080
admin@machin-lane.co.uk
<https://www.machin-lane.co.uk/>