



Holcombe Road | | Rochester | ME1 2HX

Offers over £250,000



Holcombe Road | Rochester | ME1 2HX Offers over £250,000

Nestled peacefully on a quiet no-through road in the heart of Rochester, this well-presented three-bedroom Victorian terraced home on Holcombe Road offers the perfect blend of period charm and modern comfort. Whether you're a first-time buyer looking to settle down or an investor seeking a strong addition to your portfolio, this characterful property is sure to impress.

Lovingly maintained by the current owners, the home benefits from an updated heating system and a recently refurbished bathroom, giving you peace of mind and modern convenience from day one. The property has also been recently redecorated with new flooring throughout the downstairs.

As you enter, you're welcomed by a bright and airy living room, where a beautiful bay window floods the space with natural light. An open fireplace adds a cosy, homely touch—perfect for relaxing evenings. From here, you flow seamlessly into a spacious dining room and through to a well-equipped kitchen, with the

- Chain Free
- Close to Schools
- No Through Road
- Close to Amenities

Living Room

1229 x 1191 (374.60m x 363.02m)

Dining Room

1236 x 1000 (376.73m x 304.80m)

Kitchen

896 x 7.55 (273.10m x 2.13m.16.76m)

Bathroom

8.03 x 7.07 (2.44m.0.91m x 2.13m.2.13m)





Bedroom 1

12.24 x 10.37 (3.66m.7.32m x 3.16.08m)

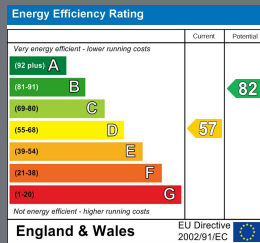
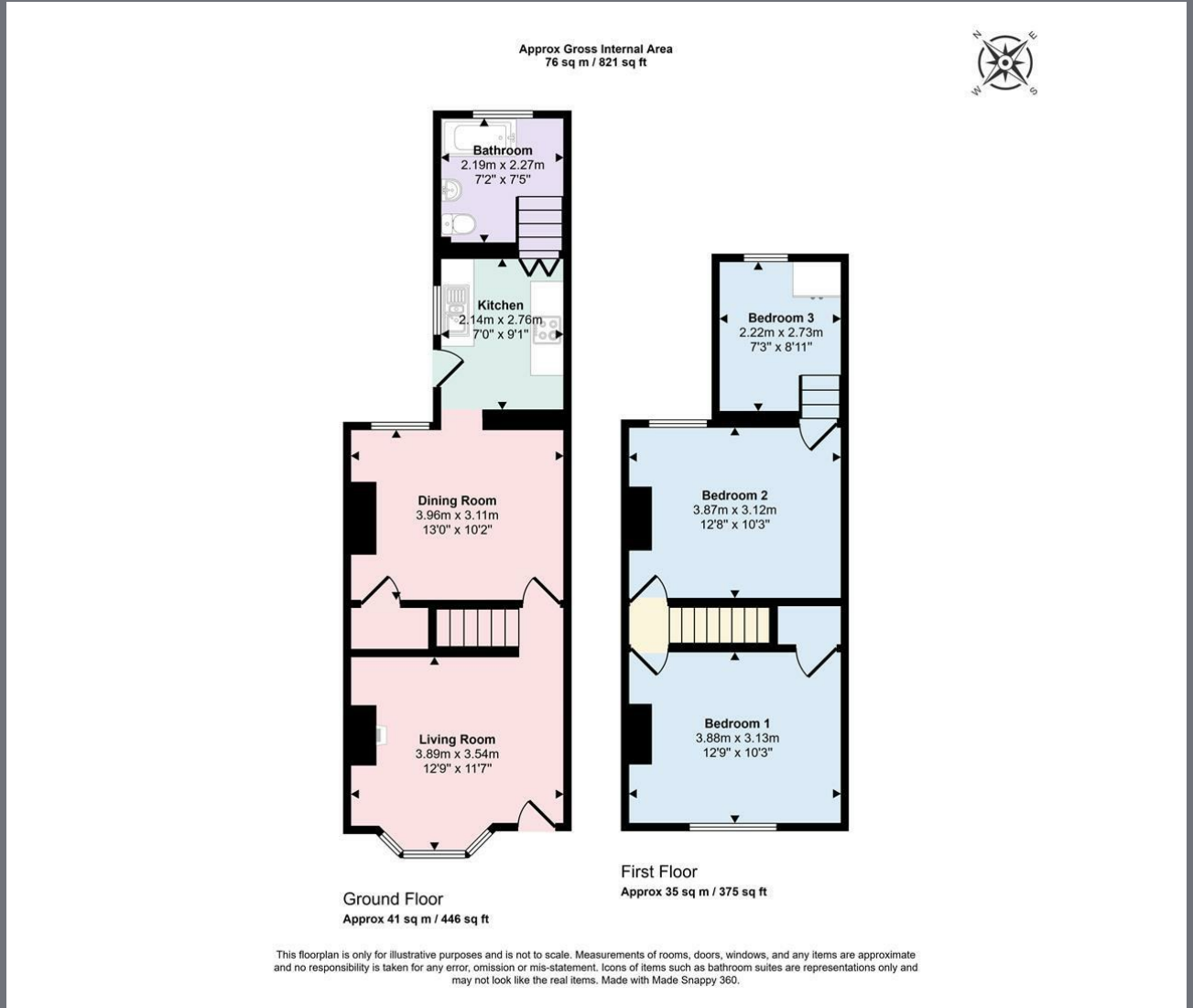
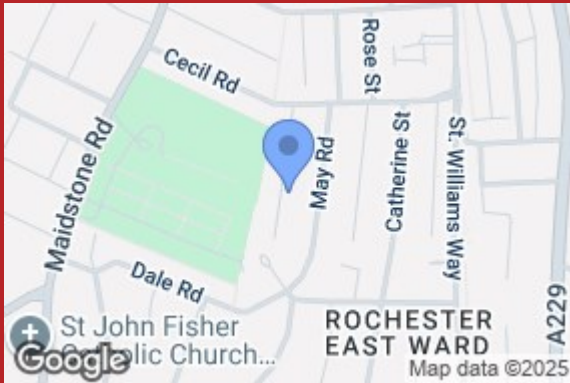
Bedroom 2

12.37 x 10.10 (3.66m.11.28m x 3.05m.3.05m)

Bedroom 3

7.16 x 8.96 (2.13m.4.88m x 2.44m.29.26m)





2B Crow Lane
Rochester
Kent
ME1 1RF
01634 829080
admin@machin-lane.co.uk
<https://www.machin-lane.co.uk/>