



Harlow's only family run independent estate agent



## Gilston Park House, Harlow, CM20 2SF

**£495,000  
Share Of  
Freehold**

“... Set Within One Of The Most Stunning & Little Known Victorian Mansions Around...”

**Two Bedrooms • Two Bathrooms • First Floor Apartment • Grade II Victorian Mansion • 13 Acres Of Grounds • Allocated Parking • Two Miles From Station • Council Tax Band :- F •**

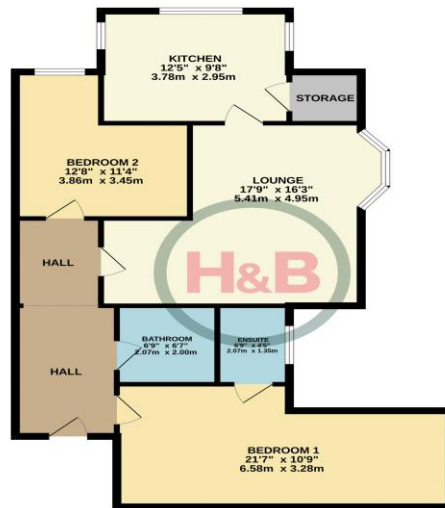


**hbproperty.co.uk** 01279 418888 sales@hbproperty.co.uk

Howick & Brooker Partnership Gothic House Old Harlow CM17 0DN

# Gilston Park House, Harlow, CM20 2SF

FIRST FLOOR  
888 sq.ft. (82.5 sq.m.) approx.



TOTAL FLOOR AREA: 888 sq.ft. (82.5 sq.m.) approx.  
Made with Metropix ©2024

## THE PROPERTY

A stunning Gothic Victorian Mansion (Grade II Listed), built in the 1850s, and converted into luxurious apartments and houses around 2000. This fine two-bedroom first floor apartment was originally the private suite of the owner of the original mansion. The apartment has 12ft ceilings and almost full length windows which frame some of the best views of the surrounding countryside and the 13 acres of private gardens. The grounds also include a lake and tennis courts. It is tucked away on the Herts & Essex border, betwixt Sawbridgeworth and Harlow. There is a mainline station about two miles away and, the A10 and M.11 are about five miles away. Stansted airport can be reached in thirty-minutes by car. There is a particularly attractive pub at Pye Corner called The Plume of Feathers which is within walking distance.

## The accommodation

### Entrance Hall

### Bedroom 1

21' 7" x 10' 9"  
(6.57m x 3.27m)

### Living Room

17' 9" x 16' 2"  
(5.41m x 4.92m)

### En-suite

6' 9" x 4' 5"  
(2.06m x 1.35m)

### Kitchen

12' 5" x 9' 8"  
(3.78m x 2.94m)

### Bedroom 2

12' 8" x 11' 4"  
(3.86m x 3.45m)

### Storage

### Bathroom

6' 9" x 6' 7"  
(2.06m x 2.01m)

### AGENTS NOTES

Lease :-  
999 Years From 2000  
Freehold:-  
Share Of Freehold  
Service Charge:-  
£3060.00 (2023)

