



Harlow's only family run  
independent estate agent



**Bury Road, Old Harlow CM17 0ED**

**£1,000,000  
Freehold**

**'...An Important Family Home Based in Old Harlow Walking To all Amenities...'**

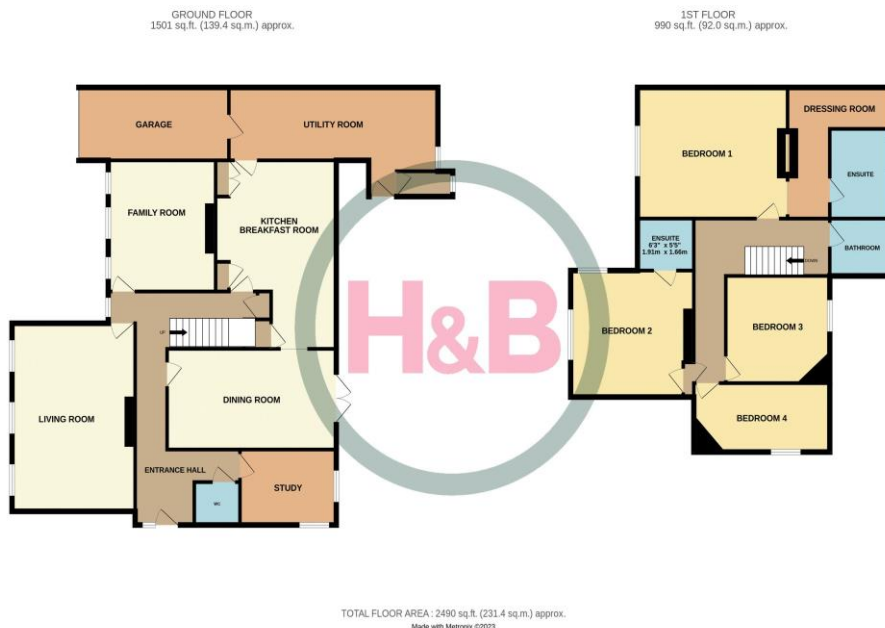
**Four Bedrooms • Four Receptions • Garage & Drive • Detached House • Three Bathrooms • EPC Rating: D • Walking to Shops • CHAIN FREE • Walking To Station • Simply Stunning Inside**



**hbproperty.co.uk** 01279 418888 sales@hbproperty.co.uk

Howick & Brooker Partnership Gothic House Old Harlow CM17 0DN

# Bury Road Old Harlow, CM17 0ED



## THE PROPERTY

### '...A Family Home of Real Prominence Based in Old Harlow Walking To all Amenities...'

This substantial detached Edwardian residence which has recently undergone a full refurbishment creating a home that offers a perfect blend of contemporary and period features throughout.

Showcasing multiple reception rooms, a beautiful kitchen diner, utility room, dining room, study, four double bedrooms, the principal with dressing room and en-suite, three bathrooms, a garage, good size rear garden and driveway this home really ticks all the boxes. Not only does the property offer voluminous living the existing owners have also gone above and beyond with the interiors such as built in surround sound speakers, underfloor heating to the kitchen, restored fireplaces and sash windows.

### Ground floor

#### WC

#### Study

10' 9" x 7' 11"  
(3.27m x 2.41m)

#### Dining Room

18' 11" x 10' 6"  
(5.76m x 3.20m)

#### Living Room

19' 8" x 13' 8"  
(5.99m x 4.16m)

#### Family Room

13' 8" x 11' 1"  
(4.16m x 3.38m)

#### Kitchen/Breakfast Room

20' 9" x 13' 8"  
(6.32m x 4.16m)  
Taken To Maximum Dimensions

#### Utility Room

23' 3" x 8' 6"  
(7.08m x 2.59m)

### First floor

#### First Floor Landing

#### Bedroom One

14' 3" x 13' 8"  
(4.34m x 4.16m)

#### Walk In Wardrobe

#### En Suite Shower

#### Bedroom Two

13' 2" x 12' 8"  
(4.01m x 3.86m)

#### En Suite Shower

#### Bedroom Three

10' 4" x 9' 7"  
(3.15m x 2.92m)

#### Bedroom Four

13' 4" x 7' 2"  
(4.06m x 2.18m)

#### Family Bathroom

### Outside

#### Garage

16' 7" x 7' 7"  
(5.06m x 2.32m)

#### Driveway Parking

#### Gardens

