



Harlow's only family run independent estate agent



Riverside Court, Harlow, CM20 2AD

**£350,000
Leasehold**

“...One Of Only Two Penthouse Apartments On This Small Development With River Views...”

Two Bedrooms • Two Bathrooms • Two Balconies • Top Floor Penthouse • Private Gated Development • Two Allocated Spaces • Large Reception Room • Riverside Views • EPC Rating :- C

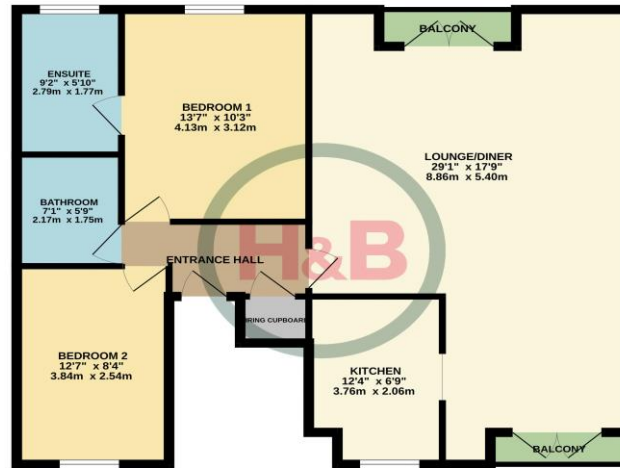


hbproperty.co.uk 01279 418888 sales@hbproperty.co.uk

Howick & Brooker Partnership Gothic House Old Harlow CM17 0DN

Riverside Court, Cambridge Road, Harlow, CM20 2AD

SECOND FLOOR
877 sq.ft. (81.5 sq.m.) approx.



TOTAL FLOOR AREA: 877 sq.ft. (81.5 sq.m.) approx.
Made with H&B Homeplan 10/2022

THE PROPERTY

“...One Of Only Two Penthouse Apartments On This Small Development With River Views...”
A top floor two bedroom penthouse apartment offering a bright and airy reception with dual aspect balconies, with southern facing views over the river Stort. The layout of the accommodation gives you the two bedrooms with bedroom one having the en-suite as well a separate bathroom, and the kitchen is found off the lounge/diner. Riverside Court is a private gated development located just off Cambridge Road, between Old Harlow and Sawbridgeworth, that is within walking distance to Harlow Mill Station, and Old Harlow's local amenities and the new junction 7a of the M11 is only short drive away.

Accommodation

Entrance Hall

Lounge/Diner

24' 9" x 17' 9"
(7.54m x 5.41m)

Kitchen

12' 4" x 6' 9"
(3.76m x 2.06m)

Bedroom 1

13' 7" x 10' 3"
(4.14m x 3.12m)

En-suite

9' 2" x 5' 9"
(2.79m x 1.75m)

Bedroom 2

12' 7" x 8' 4"
(3.83m x 2.54m)

Bathroom

7' 1" x 5' 9"
(2.16m x 1.75m)

Outside

Communal gardens with several sitting areas.

Two Allocated Parking Spaces.

Additional Information.

**Lease:-
125 Years From
1993**

**Service Charge:
£82.00 pcm**

**Ground Rent:
£100.00 pa.**

Flat 43 Riverside Court Cambridge Road HARLOW CM20 2AD	Energy rating C
Valid until 29 September 2033	Certificate number 8200-8514-9422-2120-1173