

# Old Croft Road

Walton On The Hill, Stafford, ST17 0LS

John German



John German







# Old Croft Road

Walton On The Hill, Stafford, ST17 0LS

£535,000

A village centre located traditional detached house and garden combining character and modern fittings to create a most appealing family home.



Walton on the Hill is a very popular village with homebuyers as it offers a unique blend of peace and tranquillity and yet at the same time easy access to nearby shops, schools and Stafford town centre itself. Old Croft Road is at the heart of the village and offers an established and interesting range of traditional properties.

This particular home has been much improved and upgraded over the years and makes an ideal family home. It has gas central heating and uPVC double glazing, and the front main entrance leads into a tiled floor entrance hall with stairs leading to the first floor, and access to the dining kitchen and lounge.

There are original stripped pine panelled doors throughout. There are two separate but interconnecting reception rooms, a charming front facing lounge with an oak and gas coals fire, and a rear facing sitting room with patio doors leading out to the rear garden.

The heart of this home is undoubtedly the spacious open plan dining kitchen, which has both views to the front and rear garden and patio doors and has a timber laminate floor throughout. There is ample space for a family sized dining table and chairs, and the extensively fitted kitchen section has a full range of white high gloss fronted base and wall units with quality worktops and upstands, together with glass splashback screens, inset stainless steel sink unit, built-in double oven, gas hob, extractor hood, dishwasher and space for a fridge freezer. Leading off the dining kitchen is an inner lobby area that in turn leads to a large understairs pantry store and a two piece fitted guest cloakroom that also accommodates the Worcester gas central heating boiler.

The characterful first floor landing gives access to the four spacious bedrooms, bathroom and separate shower room. Bedroom one is a front facing double room with garden and Old Croft views and a built-in over stairs wardrobe. Bedroom two is a rear facing double bedroom with lovely garden views. Bedroom three is a further front facing double room and bedroom four is a rear garden facing room and would be large enough to accommodate a double bed if required.

The family bathroom is fully tiled and has a bath with shower over, low level WC, wash hand basin and a shelved storage cupboard. The separate shower room is also a fully tiled room and has a large walk-in shower, low level WC and wash hand basin.

Outside, tandem garage with up and over door, rear personal door and window, electric light and power points. The property sits comfortably back from the roadside behind a gravelled multicar driveway, shaped lawn and a mature front and side border of screening shrubs, trees and perennials. The rear garden is of comfortable size and enjoys good privacy and maturity with fenced boundaries, established shrubbery and perennial borders, a full width stone paved patio, small fishpond and a summerhouse.

**Tenure:** Freehold (purchasers are advised to satisfy themselves as to the tenure via their legal representative).

**Please note:** It is quite common for some properties to have a Ring doorbell and internal recording devices.

**Property construction:** Standard **Parking:** Driveway **Electricity supply:** Mains **Water supply:** Mains

**Sewerage:** Mains **Heating:** Gas (Purchasers are advised to satisfy themselves as to their suitability).

**Broadband type:** TBC

See Ofcom link for speed: <https://checker.ofcom.org.uk/>

**Mobile signal/coverage:** See Ofcom link <https://checker.ofcom.org.uk/>

**Local Authority/Tax Band:** Stafford Borough Council / Tax Band E

**Useful Websites:** [www.gov.uk/government/organisations/environment-agency](http://www.gov.uk/government/organisations/environment-agency)

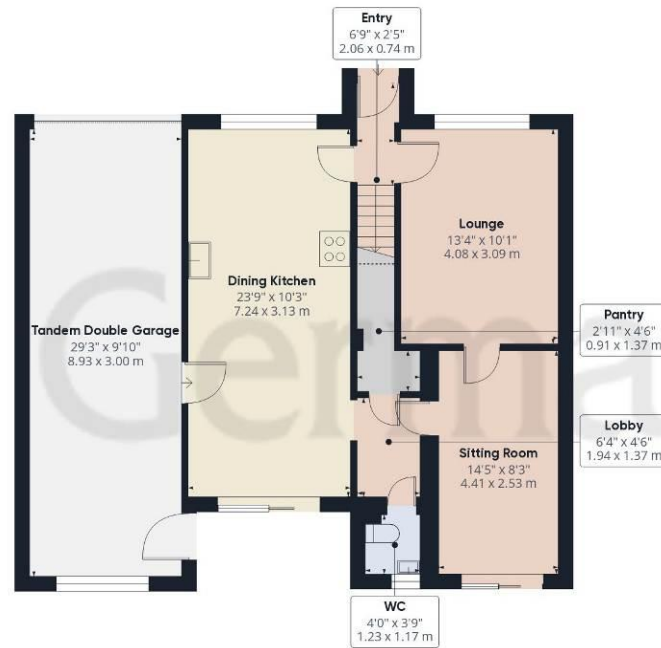
**Our Ref:** JGA26022025

The property information provided by John German Estate Agents Ltd is based on enquiries made of the vendor and from information available in the public domain. If there is any point on which you require further clarification, please contact the office and we will be pleased to check the information for you, particularly if contemplating travelling some distance to view the property. Please note if your enquiry is of a legal or structural nature, we advise you to seek advice from a qualified professional in their relevant field.









Ground Floor



Floor 1

**Approximate total area<sup>(1)</sup>**

1459.37 ft<sup>2</sup>

135.58 m<sup>2</sup>

**Reduced headroom**

2.11 ft<sup>2</sup>

0.2 m<sup>2</sup>

(1) Excluding balconies and terraces

**Reduced headroom**

..... Below 5 ft/1.5 m

While every attempt has been made to ensure accuracy, all measurements are approximate, not to scale. This floor plan is for illustrative purposes only.

Calculations were based on RICS IPMS 3C standard. Please note that calculations were adjusted by a third party and therefore may not comply with RICS IPMS 3C.

**GIRAFFE 360**





### Agents' Notes

These particulars do not constitute an offer or a contract neither do they form part of an offer or contract. The vendor does not make or give and Messrs. John German nor any person employed has any authority to make or give any representation or warranty, written or oral, in relation to this property. Whilst we endeavour to make our sales details accurate and reliable, if there is any point which is of particular importance to you, please contact the office and we will be pleased to check the information for you, particularly if contemplating travelling some distance to view the property. None of the services or appliances to the property have been tested and any prospective purchasers should satisfy themselves as to their adequacy prior to committing themselves to purchase.

### Referral Fees

**Mortgage Services** - We routinely refer all clients to APR Money Limited. It is your decision whether you choose to deal with APR Money Limited. In making that decision, you should know that we receive on average £60 per referral from APR Money Limited.

**Conveyancing Services** - If we refer clients to recommended conveyancers, it is your decision whether you choose to deal with this conveyancer. In making that decision, you should know that we receive on average £150 per referral.

**Survey Services** - If we refer clients to recommended surveyors, it is your decision whether you choose to deal with this surveyor. In making that decision, you should know that we receive up to £90 per referral.

Score	Energy rating	Current	Potential
92+	A		
81-91	B		82 B
69-80	C		
55-68	D	60 D	
39-54	E		
21-38	F		
1-20	G		



John German

5 Pool Lane, Brocton, Stafford, Staffordshire, ST17 0TR

01785 236600

stafford@johngerman.co.uk



Ashbourne | Ashby de la Zouch | Barton under Needwood  
Burton upon Trent | Derby | East Leake | Lichfield  
Loughborough | Stafford | Uttoxeter

JohnGerman.co.uk Sales and Lettings Agent



