

Brace Gardens

Doveridge, Ashbourne, DE6 5PF



Ideal first home, buy to let investment or downsize, a well presented modern terrace occupying a lovely cul de sac position on the sought after development within the desirable village of Doveridge.

£199,995



John German

Built by David Wilson Homes in 2019 and suitable for a variety of buyers including those looking to make their first step onto the property ladder, buy to let investors, those looking to downsize or looking for a lock and leave bolthole. Viewing is strongly advised to appreciate the condition and specification and most notably its delightful position on the cul de sac.

The extremely sought after village of Doveridge offers a range of amenities including the Cavendish Arms public house, sports club, First School, active village hall and tennis courts plus the beautiful church. Also on the doorstep are walks through the stunning surrounding countryside.

The towns of Uttoxeter and Ashbourne are both within easy commutable distance and the A50 dual carriageway links the M1 and M6 motorways plus the cities of Derby and Stoke on Trent.

Accommodation - A composite entrance door opens to the welcoming hall providing a pleasant introduction to the property with stairs rising to the first floor and doors to the ground floor accommodation including the guest's cloakroom/WC.

At the rear of the property is the generously sized lounge dining room that extends to the full width of the property having wide French doors opening to the garden and a useful understairs cupboard.

Positioned at the front of the property is the fitted kitchen which has a range of base and eye level units with worktops and inset sink unit set below the window, fitted hob with extractor hood over and oven under plus an integrated dishwasher and fridge freezer.

To the first floor the landing has doors leading to the two double bedrooms, the front facing second bedroom enjoying a nice outlook on the cul de sac and a built in storage cupboard.

Completing the accommodation is the fitted bathroom which has a modern

white suite with a mixer shower and fitted glazed screen above the panelled bath and complementary tiled splash backs.

Outside - To the rear a paved patio leads to a lovely enclosed garden laid to lawn with beds and gated access leading to the front of the terrace.

To the front is a small blue slate shale border with shrubs. A double width tarmac driveway provides off road parking.

Note: We are advised by the vendor there is a small communal charge of approximately £230 for the maintenance of shared areas on the development.

what3words: shorts.joins.fieri

Tenure: Freehold (purchasers are advised to satisfy themselves as to the tenure via their legal representative).

Property construction: Brick

Parking: Drive

Electricity supply: Mains

Water supply: Mains

Sewerage: Mains

Heating: LPG

(Purchasers are advised to satisfy themselves as to their suitability).

Broadband type:

See Ofcom link for speed: <https://checker.ofcom.org.uk/>

Mobile signal/coverage: See Ofcom link <https://checker.ofcom.org.uk/>

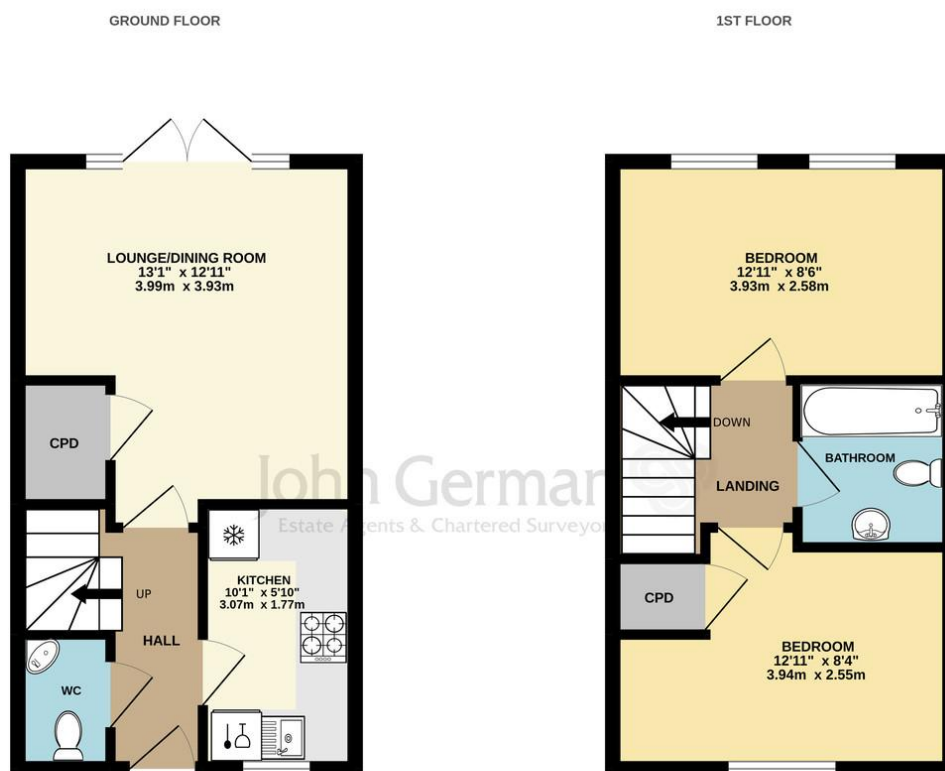
Local Authority/Tax Band: Derbyshire Dales District Council / Tax Band B

Useful Websites: www.gov.uk/government/organisations/environment-agency

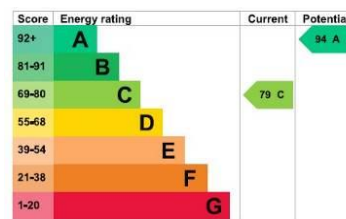
Our Ref: JGA/28062024

The property information provided by John German Estate Agents Ltd is based on enquiries made of the vendor and from information available in the public domain.

If there is any point on which you require further clarification, please contact the office and we will be pleased to check the information for you, particularly if contemplating travelling some distance to view the property. Please note if your enquiry is of a legal or structural nature, we advise you to seek advice from a qualified professional in their relevant field.







 OnTheMarket

 rightmove

 RICS

 aria
propertymark
PROTECTED

 naea
propertymark
PROTECTED

 The Property
Ombudsman

 APPROVED CODE
TRADING STANDARDS UK

John German

9a Market Place, Uttoxeter, Staffordshire, ST14 8HY

01889 567444

uttoxeter@johngerman.co.uk

Agents' Notes

These particulars do not constitute an offer or a contract neither do they form part of an offer or contract. The vendor does not make or give and Messrs. John German nor any person employed has any authority to make or give any representation or warranty, written or oral, in relation to this property. Whilst we endeavour to make our sales details accurate and reliable, if there is any point which is of particular importance to you, please contact the office and we will be pleased to check the information for you, particularly if contemplating travelling some distance to view the property. None of the services or appliances to the property have been tested and any prospective purchasers should satisfy themselves as to their adequacy prior to committing themselves to purchase.

Referral Fees

Mortgage Services - We routinely refer all clients to APR Money Limited. It is your decision whether you choose to deal with APR Money Limited. In making that decision, you should know that we receive on average £60 per referral from APR Money Limited.

Conveyancing Services - If we refer clients to recommended conveyancers, it is your decision whether you choose to deal with this conveyancer. In making that decision, you should know that we receive on average £150 per referral.

Survey Services - If we refer clients to recommended surveyors, it is your decision whether you choose to deal with this surveyor. In making that decision, you should know that we receive up to £90 per referral.

Ashbourne | Ashby de la Zouch | Barton under Needwood
Burton upon Trent | Derby | East Leake | Lichfield
Loughborough | Stafford | Uttoxeter

JohnGerman.co.uk Sales and Lettings Agent