

Mellor Lodge

Uttoxeter, ST14 8ES



Well presented first floor retirement apartment combining independent living with the use of active communal facilities situated on the edge of the town centre within walking distance to amenities.

NO UPWARD CHAIN

£108,000



John German

Freshly re-decorated and re-carpeted and for sale with no upward chain involved, viewing of this well maintained first floor retirement apartment is strongly recommended to appreciate its exact position in the complex and its condition.

Perfectly blending independent living with the use of the communal facilities which you can take or leave as you please including the residents lounge and kitchenette, lift and stairs, laundry room, guest's suite (by arrangement), lodge manager and the active social life on offer.

Situated on the edge of the town centre within walking distance to its range of amenities including several supermarkets and independent shops, doctors, dentist, coffee houses and bars, public houses and restaurants, train station and the multi screen cinema.

Accommodation - A recently upgraded electronically operated intercom system and doors open to the entrance vestibule leading to the residents lounge where corridors lead to the stairs and lift to the upper floors.

A private entrance door opens to the apartment's hall having a useful walk in cupboard housing the hot water cylinder and providing storage, plus doors leading to the accommodation.

The living dining room has a focal living flame effect electric fire and surround plus a front facing window enjoying a pleasant outlook. The fitted kitchen has a range of base and eye level units with worksurfaces and inset sink unit set below the front facing window, a fitted electric hob with extractor over, built in electric oven plus an integrated fridge and freezer.

The double bedroom has a built in double wardrobe with mirrored sliding doors and a front facing window providing light.

Completing the accommodation is the fitted shower room having a white suite incorporating a double shower cubicle with a mixer shower over and complementary tiled splash backs.

Outside - The apartment benefits from the use of communal gardens which are predominantly laid to lawn with well stocked and tended beds and borders plus several seating areas positioned to take advantage of the sun.

Shared vehicular access leads to the residents parking and the mobility scooter shelter.

what3words: football.hockey.scout

Tenure: Leasehold (purchasers are advised to satisfy themselves as to the tenure via their legal representative). There is a 125 year lease from 1st January 2007. Service charge including ground rent is £3086.20 per annum.

Property construction: Traditional

Parking: Residents **Electricity supply:** Mains **Water supply:** Mains

Sewerage: Mains **Heating:** Electric storage heaters

(Purchasers are advised to satisfy themselves as to their suitability).

Broadband type:

See Ofcom link for speed: <https://checker.ofcom.org.uk/>

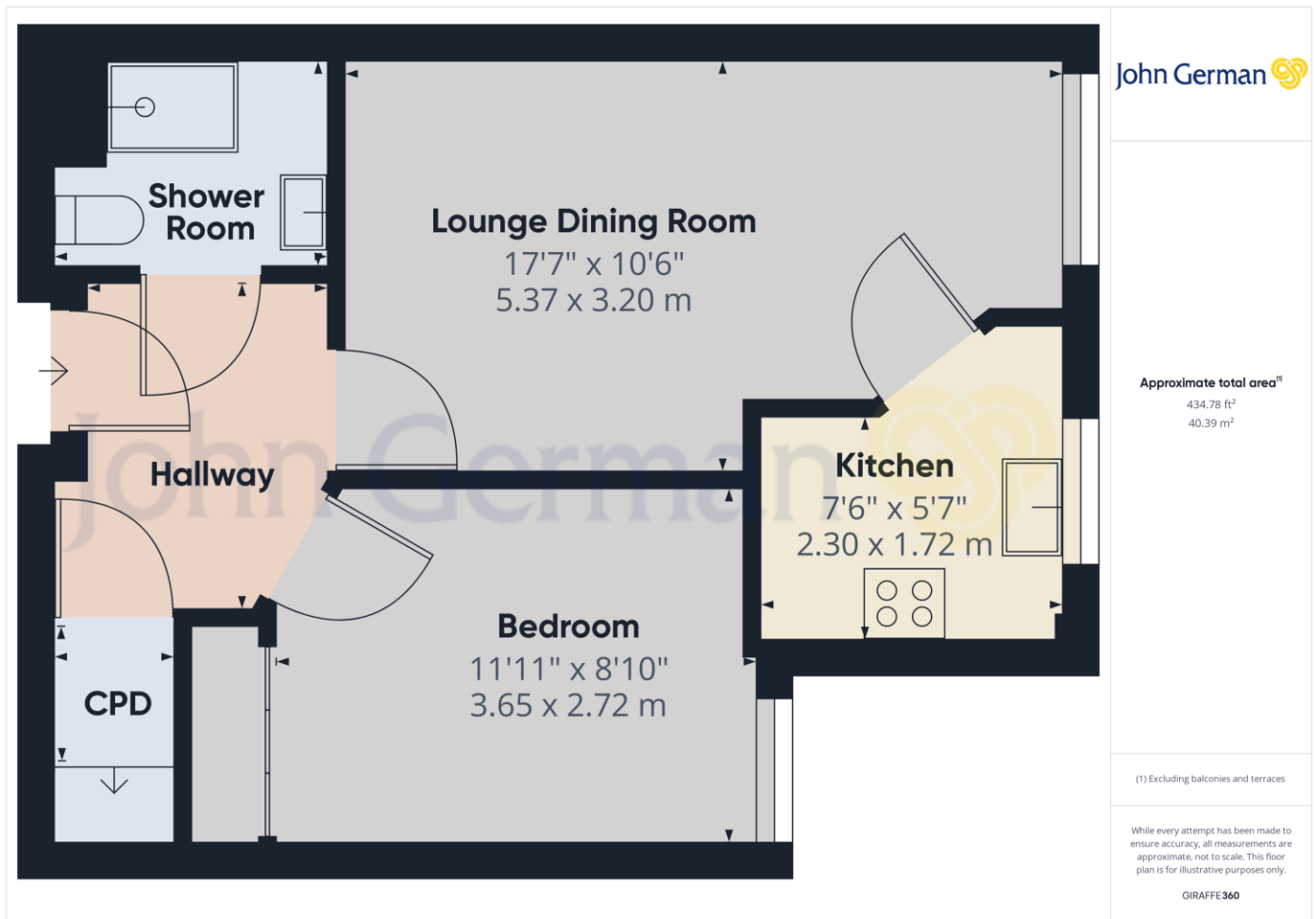
Mobile signal/coverage: See Ofcom link <https://checker.ofcom.org.uk/>

Local Authority/Tax Band: East Staffordshire Borough Council / Tax Band B

Useful Websites: www.gov.uk/government/organisations/environment-agency

Our Ref: JG25042024

The property information provided by John German Estate Agents Ltd is based on enquiries made of the vendor and from information available in the public domain. If there is any point on which you require further clarification, please contact the office and we will be pleased to check the information for you, particularly if contemplating travelling some distance to view the property. Please note if your enquiry is of a legal or structural nature, we advise you to seek advice from a qualified professional in their relevant field.







Score	Energy rating	Current	Potential
92+	A		
81-91	B	85 B	87 B
69-80	C		
55-68	D		
39-54	E		
21-38	F		
1-20	G		



John German
 9a Market Place, Uttoxeter, Staffordshire, ST14 8HY
 01889 567444
 uttoxeter@johngerman.co.uk

Agents' Notes

These particulars do not constitute an offer or a contract neither do they form part of an offer or contract. The vendor does not make or give and Messrs. John German nor any person employed has any authority to make or give any representation or warranty, written or oral, in relation to this property. Whilst we endeavour to make our sales details accurate and reliable, if there is any point which is of particular importance to you, please contact the office and we will be pleased to check the information for you, particularly if contemplating travelling some distance to view the property. None of the services or appliances to the property have been tested and any prospective purchasers should satisfy themselves as to their adequacy prior to committing themselves to purchase.

Referral Fees

Mortgage Services - We routinely refer all clients to APR Money Limited. It is your decision whether you choose to deal with APR Money Limited. In making that decision, you should know that we receive on average £60 per referral from APR Money Limited.

Conveyancing Services - If we refer clients to recommended conveyancers, it is your decision whether you choose to deal with this conveyancer. In making that decision, you should know that we receive on average £150 per referral.

Survey Services - If we refer clients to recommended surveyors, it is your decision whether you choose to deal with this surveyor. In making that decision, you should know that we receive up to £90 per referral.

Ashbourne | Ashby de la Zouch | Barton under Needwood
 Burton upon Trent | Derby | East Leake | Lichfield
 Loughborough | Stafford | Uttoxeter

JohnGerman.co.uk Sales and Lettings Agent