

Alms Road

Doveridge, Ashbourne, DE6 5JZ

John 
German





Alms Road

Doveridge, Ashbourne, DE6 5JZ

£400,000

Attractive individual detached cottage providing deceptively spacious and balanced family sized accommodation, backing onto playing fields in the heart of the highly desirable village.



Internal inspection of this traditional cottage is strongly recommended to appreciate its room dimensions and layout extending to approximately 1500 square feet (to be verified), retained character and its exact position enjoying a degree of privacy to the rear and parking for numerous vehicles at the front. Situated in the heart of the sought after and well regarded village, within easy walking distance to its amenities including the first school, The Cavendish Arms public house and active sports club, tennis courts and bowling green, historic church and walks through the surrounding countryside. The towns of Uttoxeter and Ashbourne are both in easy commutable distance and the nearby A50 dual carriageway links the M1 and M6 motorways, plus the cities of Derby and Stoke on Trent.

A uPVC part obscured double glazed door opens to the enclosed porch which provides space to take off those coats and boots. The spacious open plan living room extends to the full width of the cottage having a focal Inglenook fireplace to one side and a central chimney breast with an inset log burner on the opposite side. This space could be easily used as two reception areas if desired, with front facing windows providing ample natural light, plus a bespoke wrought iron staircase leading to the first floor. A door leads to the separate study, having a rear facing window providing an ideal workspace.

Positioned to the rear of the cottage is the kitchen which has a range of units with worktops and inset Belfast style sink set below the wide window overlooking the garden, space for a cooker and further appliances, plus an arch leading to the separate dining room, also overlooking the garden having a door giving direct access to the garage. Completing the ground floor space is the side porch/laundry which has dual aspect windows and a door to the outside, fitted worktop and appliance space, plus a sliding door to the downstairs WC which has a two piece suite and feature wall panelling.

To the first floor, the landing has doors leading to the four good sized bedrooms, each able to accommodate a double bed and the rooms to the rear enjoying a pleasant outlook, one of which has a double glazed door opening to a small balcony. Both the master bedroom and bedroom two benefit from en suite facilities, the master having a white three piece bathroom and the second bedroom having a white three piece shower room. Completing the accommodation is the fitted family bathroom, also having a white three piece suite incorporating a panelled bath with an electric shower and glazed screen above.

Outside to the rear, a feature paved patio provides a fabulous seating and entertaining area with a timber constructed outside bar/covered seating area leading to the garden mainly laid to lawn with borders, space for sheds, gated access to the front and a further gate opening to the playing fields at the rear. Additionally, there are external power points. To the front is a wide driveway providing ample parking for numerous vehicles, leading to the good sized garage which has an up and over door, power points and light.

What3words: grace.zoom.schematic

Tenure: Freehold (purchasers are advised to satisfy themselves as to the tenure via their legal representative).

Property construction: Brick. **Parking:** Drive & garage. **Electricity supply:** Mains. **Water supply:** Mains.

Sewerage: Mains. **Heating:** Oil fired central heating system
(Purchasers are advised to satisfy themselves as to their suitability).

Broadband type: See Ofcom link for speed: <https://checker.ofcom.org.uk/>

Mobile signal/coverage: See Ofcom link <https://checker.ofcom.org.uk/>

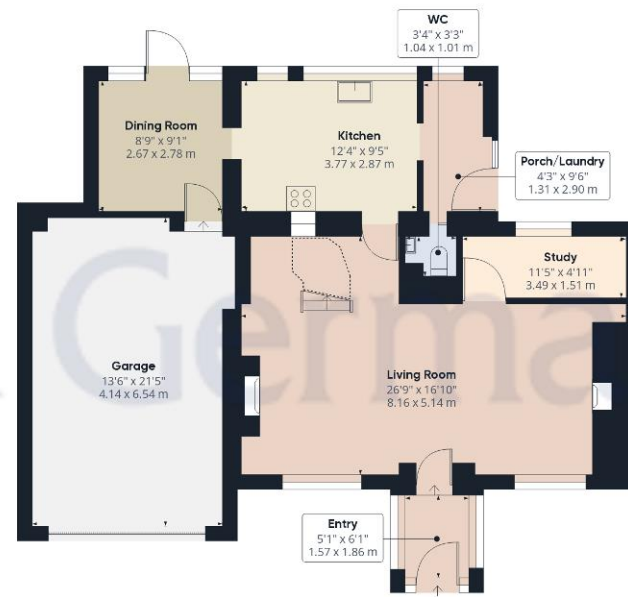
Local Authority/Tax Band: Derbyshire Dales District Council / Tax Band D

Useful Websites: www.gov.uk/government/organisations/environment-agency

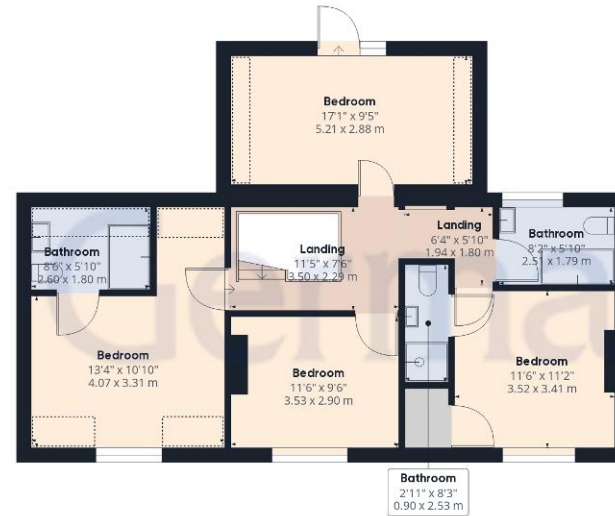
Our Ref: JGA/15012024







Ground Floor



Floor 1


Approximate total area⁰¹

1821.99 ft²
169.27 m²

Reduced headroom

84.89 ft²
7.89 m²

Excluding balconies and terraces

 Reduced headroom
(below 1.5m/4.92ft)

While every attempt has been made to ensure accuracy, all measurements are approximate, not to scale. This floor plan is for illustrative purposes only.

GIRAFFE360



Agents' Notes

These particulars do not constitute an offer or a contract neither do they form part of an offer or contract. The vendor does not make or give and Messrs. John German nor any person employed has any authority to make or give any representation or warranty, written or oral, in relation to this property. Whilst we endeavour to make our sales details accurate and reliable, if there is any point which is of particular importance to you, please contact the office and we will be pleased to check the information for you, particularly if contemplating travelling some distance to view the property. None of the services or appliances to the property have been tested and any prospective purchasers should satisfy themselves as to their adequacy prior to committing themselves to purchase.

Referral Fees

Mortgage Services - We routinely refer all clients to APR Money Limited. It is your decision whether you choose to deal with APR Money Limited. In making that decision, you should know that we receive on average £60 per referral from APR Money Limited.

Conveyancing Services - If we refer clients to recommended conveyancers, it is your decision whether you choose to deal with this conveyancer. In making that decision, you should know that we receive on average £150 per referral.

Survey Services - If we refer clients to recommended surveyors, it is your decision whether you choose to deal with this surveyor. In making that decision, you should know that we receive up to £90 per referral.

The property information provided by John German Estate Agents Ltd is based on enquiries made of the vendor and from information available in the public domain. If there is any point on which you require further clarification, please contact the office and we will be pleased to check the information for you, particularly if contemplating travelling some distance to view the property. Please note if your enquiry is of a legal or structural nature, we advise you to seek advice from a qualified professional in their relevant field.

Score	Energy rating	Current	Potential
92+	A		
81-91	B		
69-80	C		77 C
55-68	D		
39-54	E	52 E	
21-38	F		
1-20	G		



John German

9a Market Place, Uttoxeter, Staffordshire, ST14 8HY
 01889 567444
 uttoxeter@johngerman.co.uk

Ashbourne | Ashby de la Zouch | Barton under Needwood
 Burton upon Trent | Derby | East Leake | Lichfield
 Loughborough | Stafford | Uttoxeter

JohnGerman.co.uk Sales and Lettings Agent



