



£126,000

39 MEDINA COURT, OLD WESTMINSTER LANE, NEWPORT,
ISLE OF WIGHT , PO30 5PW

Hose
Rhodes
Dickson





£126,000

39 MEDINA COURT, OLD WESTMINSTER LANE, NEWPORT, ISLE OF WIGHT , PO30 5PW

A one bedroom second floor apartment with Juliet Balcony and pleasant outlook over Lukely Brook. Situated in this popular McCarthy & Stone development of forty seven apartments for the over 60's. Comprising a spacious living room with Juliet balcony, fitted kitchen, large double bedroom and shower room.

Heating is supplied by Dimplex night storage heaters and there is double glazing throughout. A residents car park provides parking on a first come first served basis.

On site facilities include a residents lounge and kitchen, guest suite and laundry room together with communal gardens and seating areas backing onto Lukely Brook.

Centrally located within walking distance of the town centre and Sainsbury's supermarket.

COMMUNAL ENTRANCE HALL With access to residents lounge, kitchen and lift and stairs to all floors.

ENTRANCE HALL Large walk in cupboard housing the hot water storage tank. Fitted store cupboard.

LOUNGE/DINER 22' 8" x 10' 8" (6.91m x 3.25m) Door to Juliet balcony, overlooking Lukely Brook. Night storage heater.

KITCHEN 7' 5" max x 4' 10" min (2.26m x 1.47m) Comprising a range of fitted units with floor and wall cupboard, stainless steel inset sink and worktops. Built in fridge and freezer, built in electric oven and hob.

BEDROOM 15' 0" x 9' 8" (4.57m x 2.95m) Night storage heater and fitted wardrobe with mirrored doors.

BATHROOM Comprising panelled bath with shower over, wash basin with fitted cupboards under and wc. Wall mounted electric fan heater and heated towel rail.

OUTSIDE Communal gardens and seating areas, backing onto Lukely Brook. Residents car park with parking on a first come first served basis.

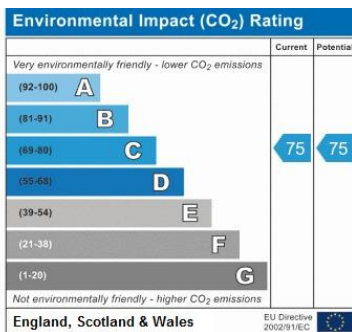
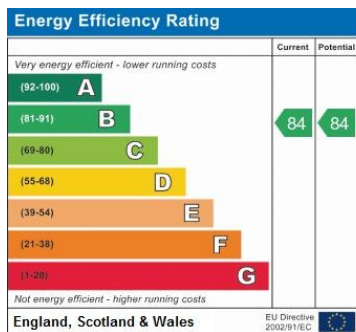
Leasehold 125 years from 2009

Council Tax Band: TBC



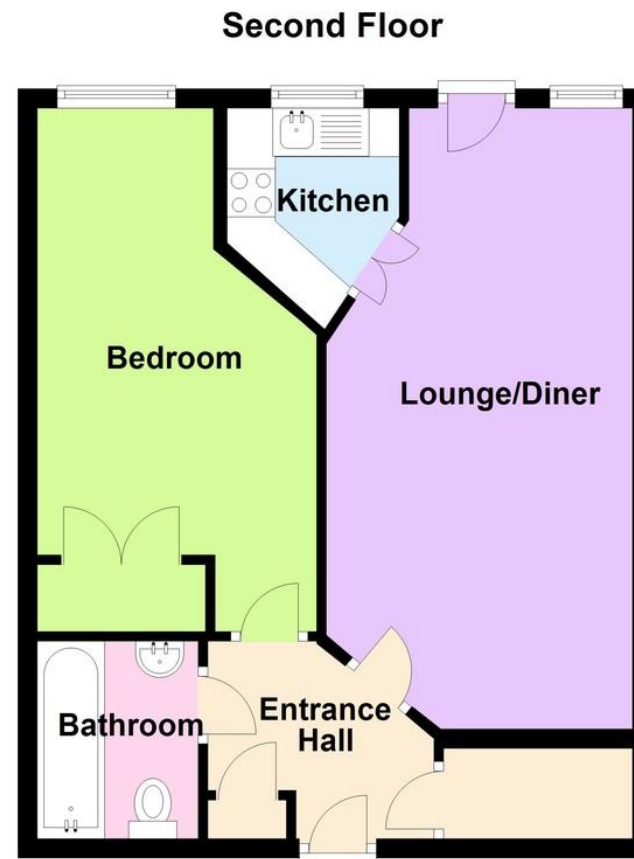
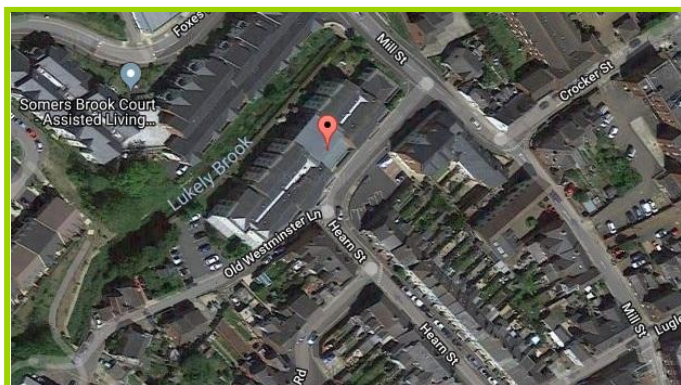
For more information on mortgages and home insurance, call our Hose Rhodes Dickson in-house mortgage advisor, Jon Shears.

Call Jon on 01983 521144



Where to find the property

39 Medina Court, Old Westminster Lane, Newport, Isle Of Wight, PO30 5PW



This plan is for illustrative purposes. Measurements of doors, windows, rooms and any other items are approximate. Floor areas are approximate. Plan produced using PlanUp.

Our description of any appliances and/or services (including any central heating system) should not be taken as any guarantee that these are in working order. None of the statements contained in these particulars as to this property are to be relied upon as statements or representation of fact nor is it intended to form any part of any contract.

Especially if travelling long distances, if there is any point of particular importance, please contact the office who will be pleased to clarify the information.

Floor plans are a schematic and are for guidance only. All measurements are approximate. Please note that if our photographs depict the property in a furnished condition, on completion all furnishings will be removed unless specifically mentioned elsewhere as being included in the sale.

Call our Newport office to arrange a viewing
01983 521144 or email newport@hrdiw.co.uk

Newport 521144 | Ventnor 855525 | Bembridge 875000 | Ryde 565658 | Cowes 294714 | Shanklin 866000

www.hrdiw.co.uk
Friendly service and local knowledge

Hose
Rhodes
Dickson