



Ibbett Mosely

Black Eagle Close, Westerham, TN16 1SE



A luxury development of six high specification apartments created by local developers Land Genie Ltd and situated in a sought after location within the town centre

Each apartment has a contemporary luxury finish with two bedrooms, en-suite shower room and stylish bathroom, the generous living space and kitchen is full fitted with Bosch appliances.

Each apartment will have its own space in a secure underground parking area.

- Master Bedroom with En-Suite
- Bedroom Two
- Bathroom
- Open Plan Living Room and Fitted Kitchen
- Gas Central Heating
- Double Glazing
- Gated Underground Parking
- Energy Efficient
- Lift and Stairs Access

PRICES

Apartment 1 - Ground Floor - Sold

Apartment 2 - Ground Floor - Sold

Apartment 3 - Ground Floor - Reserved

Apartment 4 - First Floor - OIEO

£425,000

Apartment 5 - First floor - Sold

Apartment 6 - First Floor - OIEO

£425,000

LOCATION

Falcon House is located close to the centre of Westerham, which has a great mix of eateries, boutiques and local stores, ensuring a strong local community and thriving town for visitors attracted to its quaint and historic associations.

Oxted (5 miles) and Sevenoaks (7 miles) provide rail services into London Victoria I(39 minutes) and London Bridge (32 minutes), and a further selection of shopping, eateries,

entertainment and leisure facilities.

The national motorway network is easily accessed via the M25 at Sevenoaks (J5) or Godstone (J6).

SPECIFICATION

KITCHENS

Contemporary Handleless Lacquered Kitchens with Soft Close Mechanisms. Fully Integrated Energy Efficient Bosch Appliances including Induction Hob, Electric Oven, Fridge/Freezer, Microwave, Dishwasher and Washer Dryer.

Quartz Worktops with Sink Grooves. Blanco Undermount Sink with Blanco Mode Tap.

Under Cabinet LED Strip Lighting.

BATHROOMS

Fully Tiled - Ceramic Porcelain tiles. Mix of contemporary designer range





sanitary ware (Vado) and vanity units.
Double/Triple Concealed Shower Valves with
Fixed Head Shower and Handset.
Electric Towel Radiators.

HEATING

Gas Central Heating with Valliant Combination
Boilers.
Digital Thermostatic Control.
Dedicated Solar PV Panels.

INTERNAL

Chrome Plated Sockets
LED Spotlights
LVT Flooring to Kitchen and Living Areas.
Carpeted Bedrooms.
Fully Fitted Wardrobes to all Master Suites and
Multiple Storage Cupboards Throughout.

EXTERNAL

Gated Underground Parking.
One Allocated Parking Space per Apartment.
Cycle Storage.
Dedicated Bin and Recycling Facilities.
TV/Sky Ready.

WARRANTY

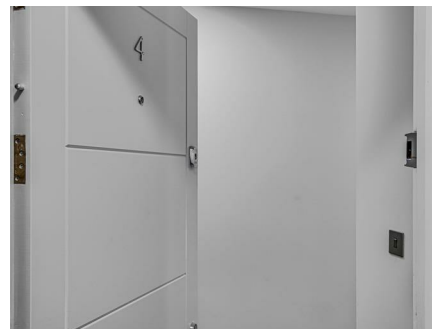
Each Apartment will have a Ten Year ICW
Warranty.

THE LEASE

There will be a 995 year Lease with a Share of
the Freehold.

There is a Residents Management Company
set-up (Falcon House Residents Ltd) - each
apartment will receive a share as part of the
purchase.





SERVICE CHARGES

The Service Charge Budget has calculated that for the first year all the ground floor apartment would contribute £891.67 and the first floor apartments would contribute £1,125.00 annually.

The Service Charge includes:

Block Building Insurance * Cleaning * Electricity Costs * Engineering Insurance * Fire Equipment & Maintenance * Garden & Grounds Maintenance * General Minor Repairs * Lift Repairs & Maintenance * Window Cleaning * Accountancy Fees and Reserve Fund.

GROUND RENT

The annual Ground Rent will be a nominal £10.

SERVICES

Mains gas, water, electricity and drainage are connected.

COUNCIL TAX, BAND D - SEVENOAKS

The properties are in the area covered by Sevenoaks District Council. Council Tax and have not as yet been allocated.

NOTE

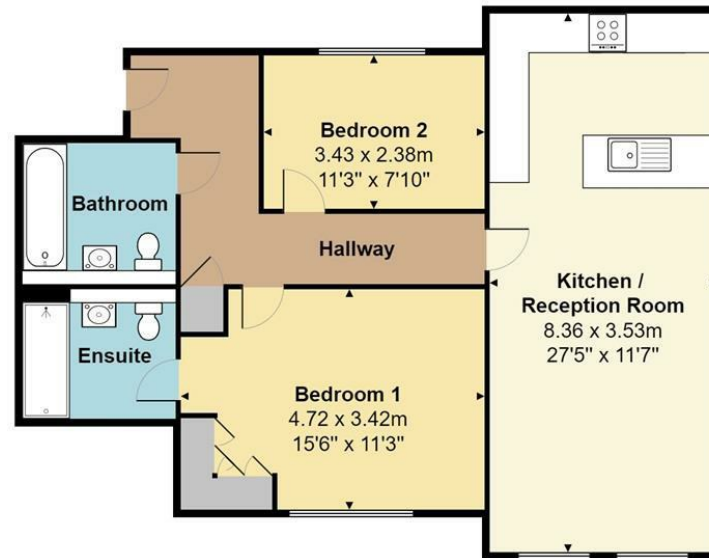
The internal photographs and floor plan relate to apartment four.

DIRECTIONS

Leave Westerham on the A25 towards Oxted. Pass the Croydon Road, Stratton Terrace, New Street and Squerryes Mede of the right. Continue around the right hand bend when Black Eagle Close will then be found on the right.

Falcon House, Black Eagle Close, Westerham, TN16

Total Floor Area: 74.9 m² ... 807 ft²



Measurements are approximate, not to scale and for illustrative purposes only.
www.essentialpropertymarketing.com

Ibbett Mosely

Westerham 01959 563265

EPC Rating- B

Offices at - BOROUGH GREEN - OTFORD - SEVENOAKS - SOUTHWARK
TONBRIDGE - WESTMINSTER - WESTERHAM - WEST MALLING

www.ibbettmosely.co.uk

IMPORTANT - Ibbett Mosely, for themselves and for the vendors or lessors of this property whose agents they are give notice that (i) these particulars are set out as a general outline only for guidance of intending purchasers or lessees, and do not constitute, nor constitute part of an offer or contract; (ii) all descriptions, dimensions references to condition and necessary permissions for use and occupation, and other details are given without responsibility and any intending purchasers or tenants should not rely on them as statements or representations of fact but must satisfy themselves by inspection or otherwise as to the correctness of each of them; (iii) no person in the employment of Ibbett Mosely, has any authority to make or give any representation or warranty whatever in relation to this property ver 3.0.

...a name you can trust
offices in Kent and London