



HARVEY ROBINSON

£93,800

8 Tiptoff Close

Alconbury Weald, PE28 4FU

## PROPERTY SUMMARY

35% SHARED OWNERSHIP

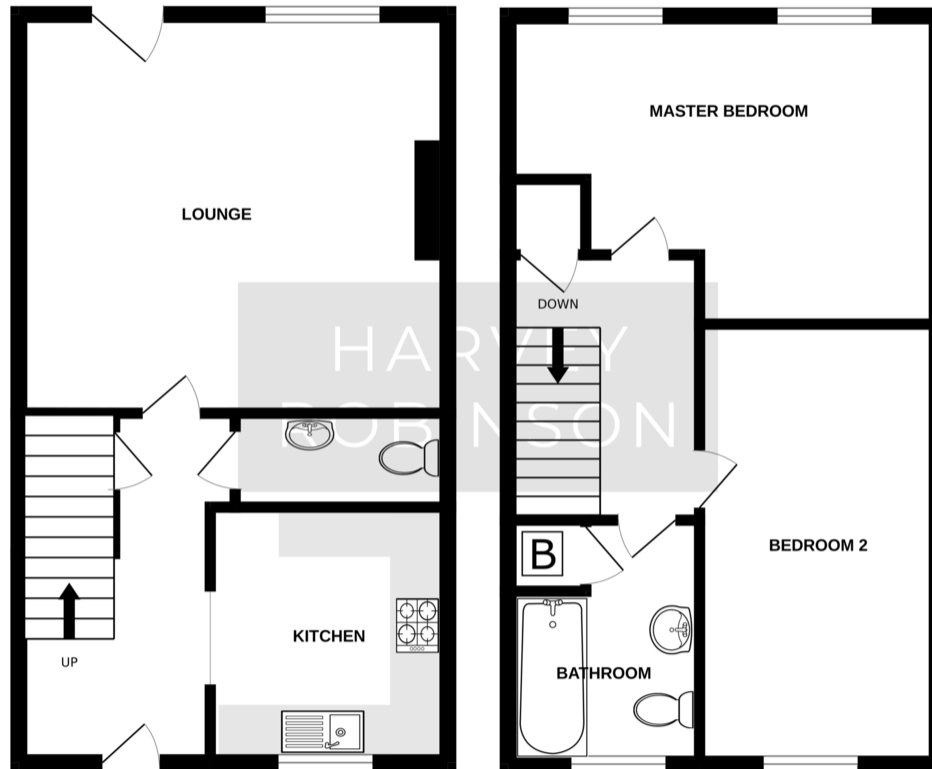
Harvey Robinson estate agents in Huntingdon are delighted to offer for sale this Spacious Well Presented, Two Bedroom Mid-Terraced House built on the popular development at Alconbury Weald. This property benefits from a Entrance Hall, Kitchen, Cloakroom, Lounge/Diner, Master Bedroom, Second Bedroom and Family Bathroom. Outside there is also Allocated Parking and a Large Garden to the rear. For more information and to arrange a viewing please contact Harvey Robinson estate agents in Huntingdon.





GROUND FLOOR  
389 sq.ft. (36.1 sq.m.) approx.

1ST FLOOR  
393 sq.ft. (36.5 sq.m.) approx.



TOTAL FLOOR AREA : 781 sq.ft. (72.6 sq.m.) approx.  
Made with Metroix ©2024

## FAQs

Management company: Cross Keys -  
35% Shared Ownership  
Tenure: Leasehold - 121 years left on lease  
Service Charge: £23.82  
Monthly rent: £461.14  
EPC: B  
Property Built: 2020 - vendors owned 4-5 years  
Onward Movements: upsizing  
Rear Garden: Facing South  
Secondary School: Sawtry  
Council Tax: Band B

| Score | Energy rating | Current | Potential |
|-------|---------------|---------|-----------|
| 92+   | A             |         | 96 A      |
| 81-91 | B             | 84 B    |           |
| 69-80 | C             |         |           |
| 55-68 | D             |         |           |
| 39-54 | E             |         |           |
| 21-38 | F             |         |           |
| 1-20  | G             |         |           |

Agents Note: Whilst every care has been taken to prepare these particulars, they are for guidance purposes only. All measurements are approximate and are for general guidance purposes only and whilst every care has been taken to ensure their accuracy, they should not be relied upon and potential buyers/tenants are advised to recheck the measurements

HARVEY ROBINSON

### OFFICE ADDRESS

91 High Street, Huntingdon,  
Cambridgeshire, PE29 3DP

### CONTACT

01480 454040  
huntingdon@harveyrobinson.co.uk  
www.harveyrobinson.co.uk