



HARVEY ROBINSON

Offers In Excess Of  
£600,000

Great North Road  
Eaton Socon, PE19 8EF

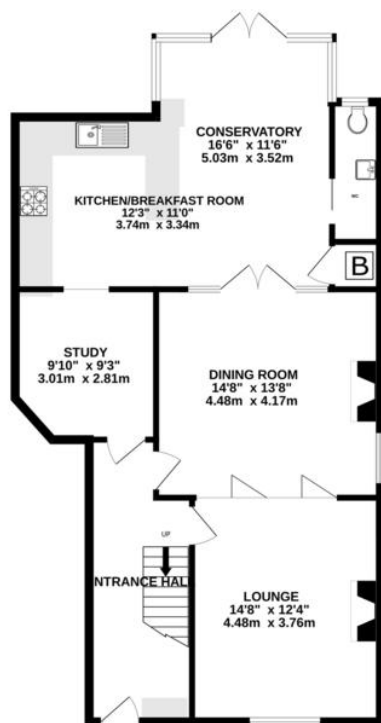
## PROPERTY SUMMARY

The Collection by Harvey Robinson proudly present this opportunity to own a substantial five-bedroom Georgian semi-detached family residence steeped in history located in Eaton Socon. Constructed around 1830 and thoughtfully extended with the addition of a stunning open-plan conservatory, whilst retaining the original character and charm, this is an exceptional home offering spacious and adaptable accommodation.

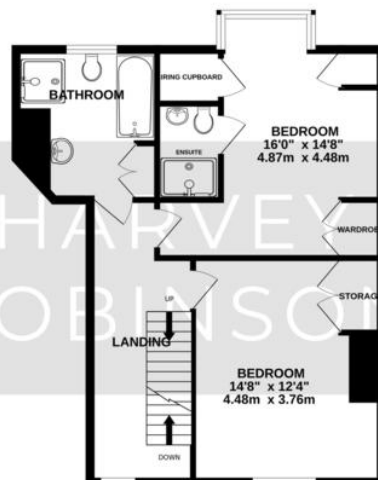




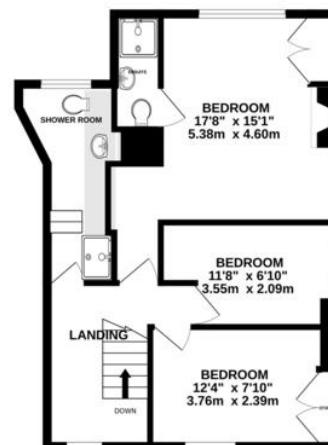
GROUND FLOOR  
906 sq.ft. (84.2 sq.m.) approx.



1ST FLOOR  
582 sq.ft. (54.1 sq.m.) approx.



2ND FLOOR  
511 sq.ft. (47.3 sq.m.) approx.



TOTAL FLOOR AREA: 1999 sq.ft. (185.8 sq.m.) approx.  
Made with Metropix ©2025

## FAQs

Property Tenure: Freehold  
Property Constructed: Circa 1830  
Council Tax Band: D  
Rear Garden Aspect: East  
Primary School: Bushmead/Crosshall Infant School  
Secondary School: Ernulf/Longsands Academy  
What3Words: ///flesh.riskiest.profiled  
EPC Rating: Exempt  
Water Meter: Yes  
Conservatory Age: 2007

Agents Note: Whilst every care has been taken to prepare these particulars, they are for guidance purposes only. All measurements are approximate and are for general guidance purposes only and whilst every care has been taken to ensure their accuracy, they should not be relied upon and potential buyers/tenants are advised to recheck the measurements

HARVEY ROBINSON

## OFFICE ADDRESS

22 Market Square, St Neots,  
Cambridgeshire, PE19 2AF

## CONTACT

01480 454040  
stneots@harveyrobinson.co.uk  
www.harveyrobinson.co.uk