



HARVEY ROBINSON

Offers In Excess Of  
**£300,000**  
Drivers Avenue  
Huntingdon, PE29 1TZ



Harvey Robinson Estate Agents are pleased to present this charming three-bedroom semi-detached home located in the heart of Huntingdon. Built in the 1950s, this delightful property offers a welcoming entrance hall, a cosy lounge, a dining room, a well-appointed kitchen, a utility area, and a bright conservatory on the ground floor. The first floor features a landing, a wet/shower room, two spacious double bedrooms, and a generously sized single bedroom. The exterior of the property includes a large rear garden, a front garden with off-road parking, and a garage. This home also holds great potential for further development or extensions, making it an excellent investment opportunity in a prime central location.

Huntingdon is one of Cambridgeshire's best-loved locations. It's famous for being the birthplace of Oliver Cromwell, and there are several historic buildings in and around the town, which give it plenty of character. It is a popular location for people of all ages with its great local amenities and riverside walks. In the town itself, you'll find many familiar High Street brands, such as Marks and Spencer's, WH Smiths, Boots, TK Maxx and more. There are also some great pubs and restaurants in the town in particular The Restaurant and Wine Shop at the Old Bridge Hotel is well worth a visit.

The station is located a few minutes walk from the property and has trains running to London King's Cross throughout the day. There is also the central bus terminus located just adjacent which offers a guided bus service into Cambridge City Centre.

3 

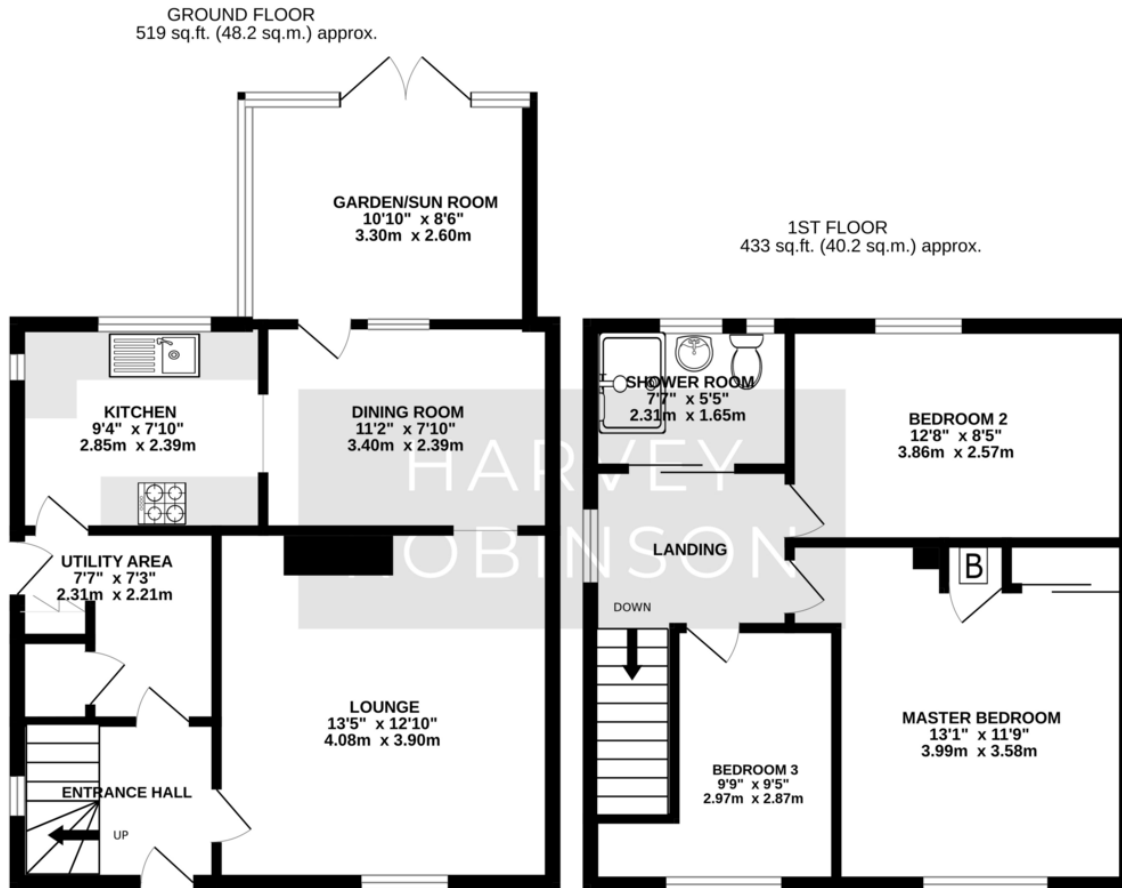
1 

2 





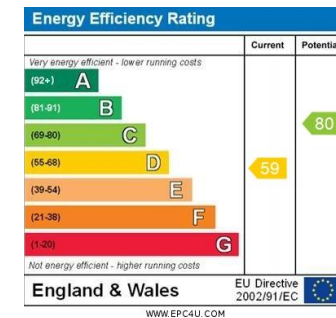




TOTAL FLOOR AREA : 951 sq.ft. (88.4 sq.m.) approx.  
 Made with Metropix ©2024

## FAQs

**Tenure:** Freehold  
**Age of Property:** 1960's  
**Council Tax Band:** C  
**Vendors Onward Chain:** End of chain  
**Rear Aspect:** West facing  
**Water Meter:** Yes, located on the driveway  
**Garden/Sun Room:** Solid roof added approx. 5 yrs ago  
**What3Words Location:** [///swimsuits.sulk.adventure](https://www.what3words.com/#!/swimsuits.sulk.adventure)



Agents Note: Whilst every care has been taken to prepare these particulars, they are for guidance purposes only. All measurements are approximate and are for general guidance purposes only and whilst every care has been taken to ensure their accuracy, they should not be relied upon and potential buyers/tenants are advised to recheck the measurements

HARVEY ROBINSON

### OFFICE ADDRESS

91 High Street, Huntingdon,  
 Cambridgeshire, PE29 3DP

### CONTACT

01480 454040  
[huntingdon@harveyrobinson.co.uk](mailto:huntingdon@harveyrobinson.co.uk)  
[www.harveyrobinson.co.uk](http://www.harveyrobinson.co.uk)