



HARVEY ROBINSON

£475,000

2 Seathwaite

Stukeley Meadows, PE29 6UY

PROPERTY SUMMARY

Harvey Robinson Estate Agents in Huntingdon are delighted to bring to market this Four Bedroom Detached Family Home on the highly sought-after area in Stukeley Meadows. In brief, the property comprises entrance hall, cloakroom, family room/home office, lounge with opening to dining room, kitchen/breakfast room & utility room to the ground floor. Upstairs, there are four well appointed bedrooms with a refitted ensuite to the master and a refitted bathroom. Outside, the property has a double garage, ample off road parking and an enclosed rear garden. This property is a must see to truly appreciate, for further information or to arrange a viewing please contact our Huntingdon office.



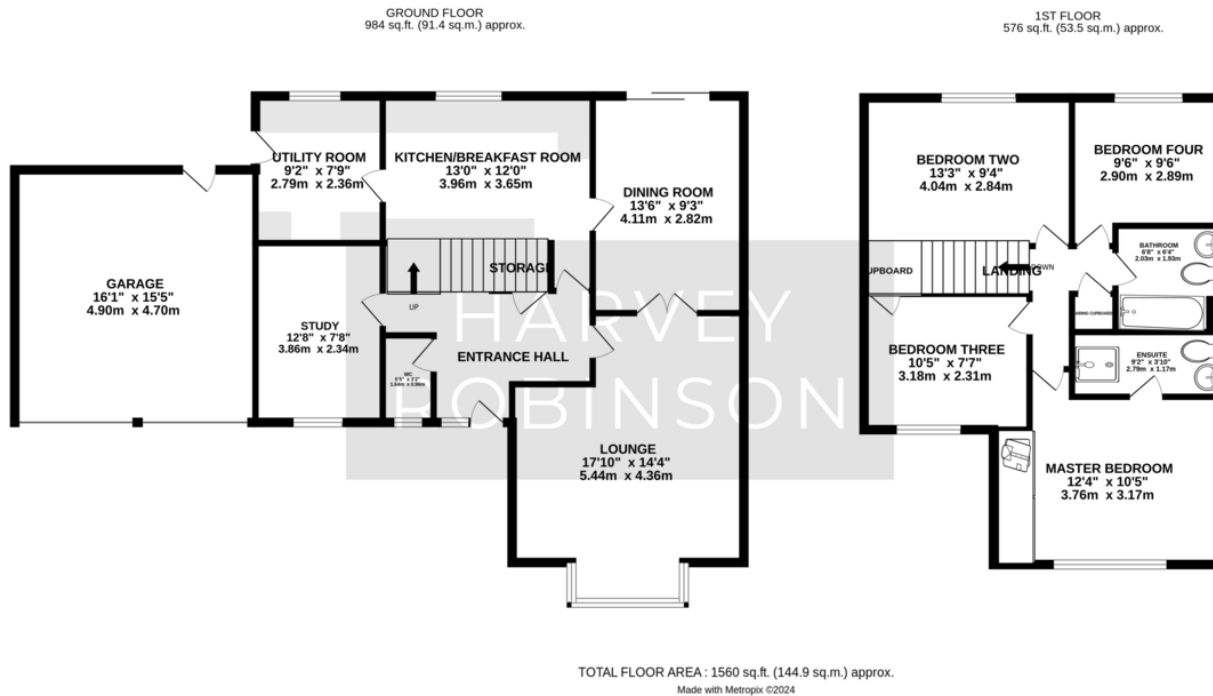


FAQs

Tenure: Freehold

Council Tax Band: E

Vendors Onward Movements: Relocating



Agents Note: Whilst every care has been taken to prepare these particulars, they are for guidance purposes only. All measurements are approximate and are for general guidance purposes only and whilst every care has been taken to ensure their accuracy, they should not be relied upon and potential buyers/tenants are advised to recheck the measurements

HARVEY ROBINSON

OFFICE ADDRESS

91 High Street, Huntingdon,
Cambridgeshire, PE29 3DP

CONTACT

01480 454040
huntingdon@harveyrobinson.co.uk
www.harveyrobinson.co.uk