



HARVEY ROBINSON

Guide Price
£300,000
25 Dartmoor Drive
Hinchingsbrooke, PE29 6XT

PROPERTY SUMMARY

** GUIDE PRICE £300,000 to £325,000 **

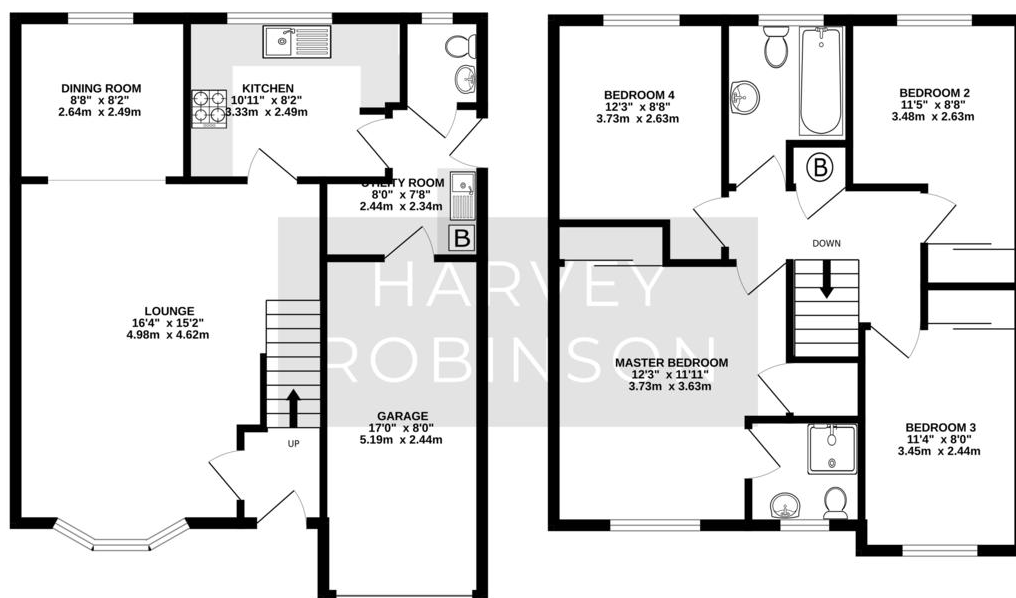
Harvey Robinson Estate Agents are delighted to bring to market this Four Double Bedroom Detached Family Home in the highlight sought after area of Hinchingsbrooke in Huntingdon. The property in brief comprises entrance hall, lounge opening to the dining room, kitchen, utility room & cloakroom to the ground floor. There are four double bedrooms, 3 of which offer fitted wardrobes & the master with an ensuite shower room and a family bathroom completes the first floor. There is an integral garage, front & rear gardens and off road parking for two vehicles. The property benefits from a modern gas boiler and is offered with no onward chain. This family home does require some modernisation which offers great potential to add your own stamp.

For further information or to arrange a viewing, please contact our Huntingdon office.



GROUND FLOOR
633 sq.ft. (58.8 sq.m.) approx.

1ST FLOOR
609 sq.ft. (56.6 sq.m.) approx.



TOTAL FLOOR AREA : 1243 sq.ft. (115.5 sq.m.) approx.
Made with Metropix ©2024

FAQs

Tenure: Freehold
Council Tax Band: D
Vendors Onward Chain: No chain
W3W ///thinker.fulfilled.demoted

Agents Note: Whilst every care has been taken to prepare these particulars, they are for guidance purposes only. All measurements are approximate and are for general guidance purposes only and whilst every care has been taken to ensure their accuracy, they should not be relied upon and potential buyers/tenants are advised to recheck the measurements

HARVEY ROBINSON

OFFICE ADDRESS

91 High Street, Huntingdon,
Cambridgeshire, PE29 3DP

CONTACT

01480 454040
huntingdon@harveyrobinson.co.uk
www.harveyrobinson.co.uk