

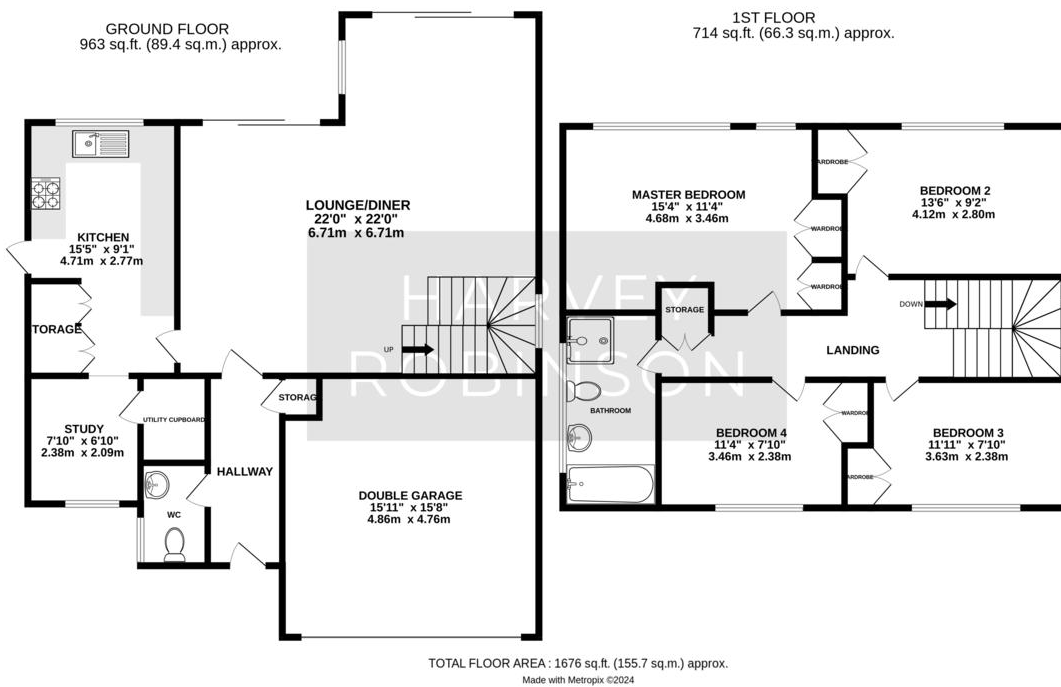


HARVEY ROBINSON

Offers In Excess Of  
£500,000  
20 Beech Avenue  
Great Stukeley, PE28 4AX

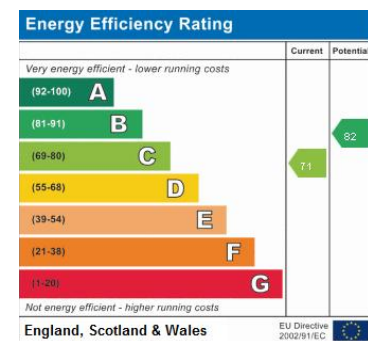
**PROPERTY SUMMARY**

Harvey Robinson Estate Agents are delighted to bring to market this well presented Four Double Bedroom Detached Home. Offering in excess of 1700sq ft of accommodation throughout, this spacious family home truly is a must see. Comprising of entrance hall, cloakroom, fitted kitchen, home office/study and an open plan 22ft lounge/diner to the ground floor. The first floor offers four double bedrooms & family bathroom. Outside, the property is situated on a good sized plot with stunning field views at the rear. This property needs to be viewed to really appreciate. For further information or to arrange a viewing, please contact our Huntingdon office.



**FAQs**

- Tenure: Freehold
- Council Tax Band: E
- Vendors Onward Chain: Downsizing
- Rear Aspect: East facing
- Water Meter: Yes
- Age of Boiler: 2011
- Loft: Part boarded



Agents Note: Whilst every care has been taken to prepare these particulars, they are for guidance purposes only. All measurements are approximate and are for general guidance purposes only and whilst every care has been taken to ensure their accuracy, they should not be relied upon and potential buyers/tenants are advised to recheck the measurements

**HARVEY ROBINSON**

**OFFICE ADDRESS**

91 High Street, Huntingdon, Cambridgeshire, PE29 3DP

**CONTACT**

01480 454040  
 huntingdon@harveyrobinson.co.uk  
 www.harveyrobinson.co.uk