



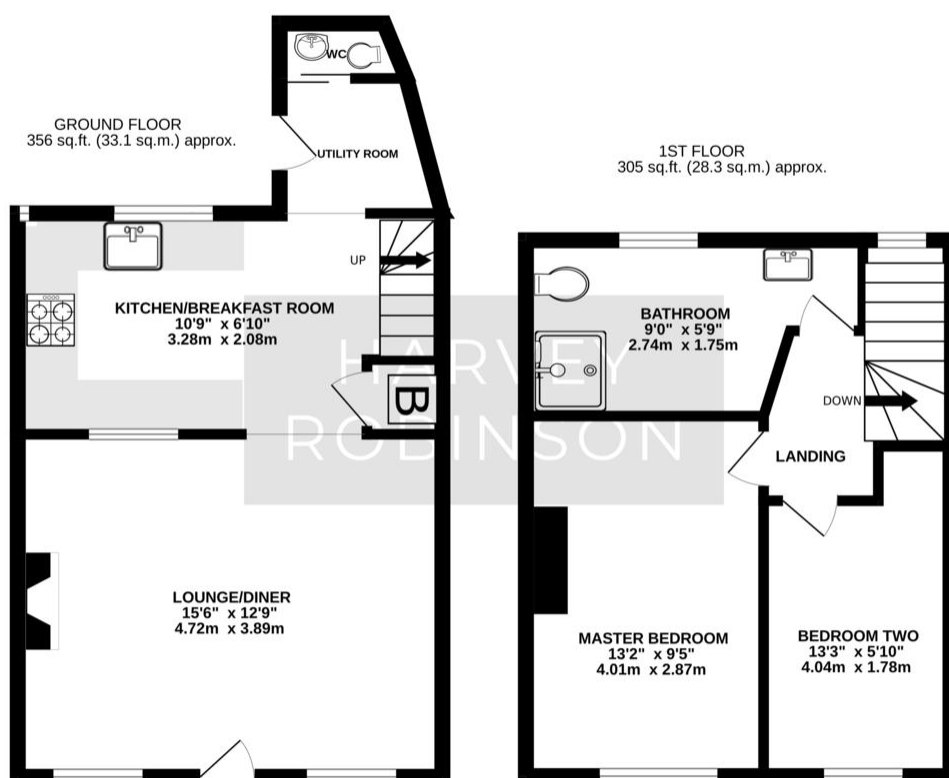
HARVEY ROBINSON

Guide Price  
£250,000  
14 High Street  
Huntingdon, PE29 3TE

**PROPERTY SUMMARY**

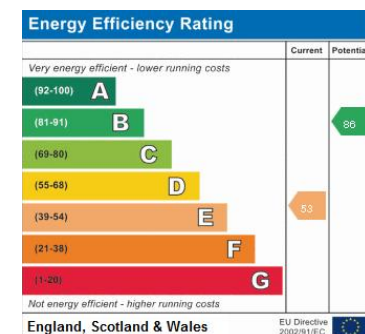
**\*\*GUIDE PRICE £250,000 to £275,000\*\***

We are proud to bring to market this stunning two bedroom period cottage in central Huntingdon. Location in the heart of Huntingdon, this beautiful period home has been extensively renovated and crafted to preserve it's rustic character charm throughout including exposed beams throughout. The property comprises a well proportioned lounge opening up to the fully fitted kitchen/breakfast room, a separate utility room & cloakroom to the ground floor. The first floor offers two double bedrooms, one of which offers great storage space and a stunning shower room. Outside, the property benefits from an out-house and a courtyard garden area.



**FAQs**

Tenure: Freehold  
 Council Tax Band: B  
 Vendors Onward Movements: No chain



Agents Note: Whilst every care has been taken to prepare these particulars, they are for guidance purposes only. All measurements are approximate and are for general guidance purposes only and whilst every care has been taken to ensure their accuracy, they should not be relied upon and potential buyers/tenants are advised to recheck the measurements

**HARVEY ROBINSON**

**OFFICE ADDRESS**

91 High Street, Huntingdon,  
 Cambridgeshire, PE29 3DP

**CONTACT**

01480 454040  
 huntingdon@harveyrobinson.co.uk  
 www.harveyrobinson.co.uk