



HARVEY ROBINSON

Offers In Excess Of
£500,000
Devoke Close
Huntingdon, PE29 6XE

PROPERTY SUMMARY

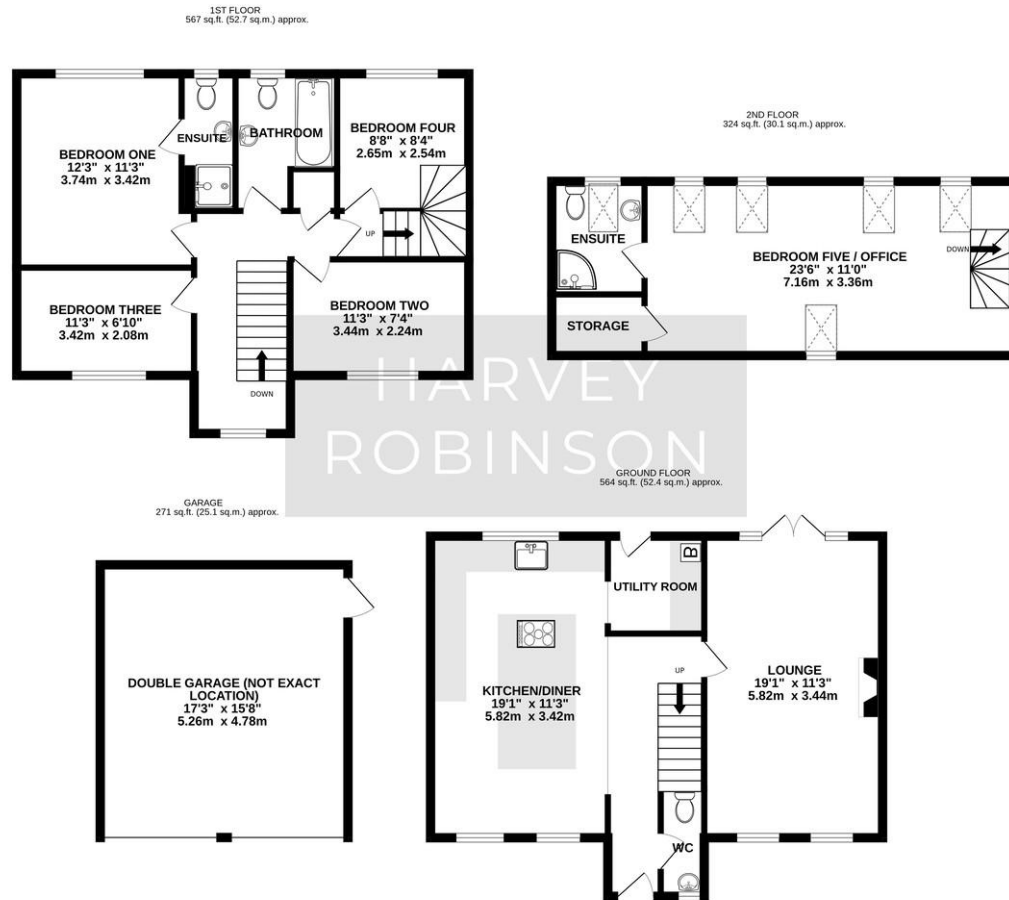
Harvey Robinson estate agents in Huntingdon, proudly present this exceptional residence located in the highly sought after area of Stukeley Meadows. Boasting five bedrooms, this property is ideally suited for a growing family. The current owner has executed a series of contemporary updates, most notably the creation of a stunning 19 ft open-plan kitchen with a built-in breakfast bar, perfect for the whole family. A loft conversion has transformed this space into a fifth bedroom, complete with its own ensuite shower room. Additional highlights of this residence include an ensuite shower room in the master bedroom, a separate family bathroom, a spacious 19 ft double-aspect lounge featuring a feature fireplace, a cloakroom, a dedicated utility room, and enclosed private gardens at both the rear and side of the property. The double garage, capable of being repurposed as a games room, offers ample storage within its loft space. Furthermore, there is off-road parking for two vehicles, all situated on a private cul-de-sac setting. This property is a must see to truly appreciate. For further details or to arrange a viewing, please contact our Huntingdon office.





TOTAL FLOOR AREA : 1726 sq.ft. (160.3 sq.m.) approx.

Made with Metropix ©2023



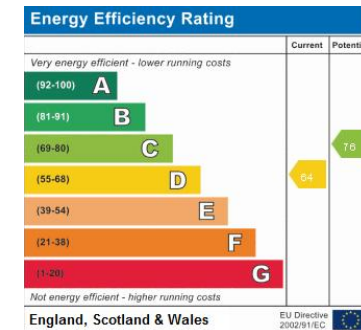
FAQs

Tenure: Freehold

Council Tax Band : D

Primary School Catchment: Stukeley Meadows

Secondary School Catchment: St Peters School



Agents Note: Whilst every care has been taken to prepare these particulars, they are for guidance purposes only. All measurements are approximate and are for general guidance purposes only and whilst every care has been taken to ensure their accuracy, they should not be relied upon and potential buyers/tenants are advised to recheck the measurements

HARVEY ROBINSON

OFFICE ADDRESS

91 High Street, Huntingdon,
Cambridgeshire, PE29 3DP

CONTACT

01480 454040
huntingdon@harveyrobinson.co.uk
www.harveyrobinson.co.uk