

A photograph of a two-story brick cottage with a blue door and a gravel driveway. The house features a gabled roof with a satellite dish and a chimney. The brickwork is light-colored with decorative bands of darker bricks. The driveway is covered in brown gravel, and there is a wooden fence in the background. The sky is blue with some clouds.

HARVEY ROBINSON

Guide Price

£475,000 to £500,000

Hartford Hill Cottage

Wyton, PE28 2DS



## PROPERTY SUMMARY

\*\*Guide Price £475,000 to £500,000\*\*

Harvey Robinson Estate Agents in Huntingdon are delighted to offer for sale this Rarely available Three Bedroom Semi Detached Extended and Improved Family Home. If you are looking for a property set in a rural location with amazing field views but close to amenities then this is the property for you. Briefly the property comprises of Entrance Hall, Cloakroom, Lounge, 32ft Kitchen/Diner, Three Double Bedrooms, Family Bathroom, Approximately 1/4 acre plot with Ample Off Road Parking. For more information and to arrange a viewing please Harvey Robinson Estate Agents in Huntingdon.

The property is nestled nicely in between Huntingdon and St Ives and benefits from panoramic field views.

Huntingdon itself is one of Cambridgeshire's best-loved locations. It's famous for being the birthplace of Oliver Cromwell, and there are several historic buildings in and around the town, which give it plenty of character. It is a popular location for people of all ages with its great local amenities and riverside walks. In the town itself, you'll find many familiar High Street brands, such as Marks and Spencer's, WH Smiths, Boots, TK Maxx and more. There are also some great pubs and restaurants in the town in particular The Restaurant and Wine Shop at the Old Bridge Hotel is well worth a visit.

There is also the central bus terminus located just adjacent which offers a guided bus service into Cambridge City Centre. The nearest train station can be found in Huntingdon which provides direct access to central London in just over an hour. Wyton offers a village like feel with its own nursery and primary school. There is a bus stop for the guided bus on the estate providing direct access to central Cambridge.

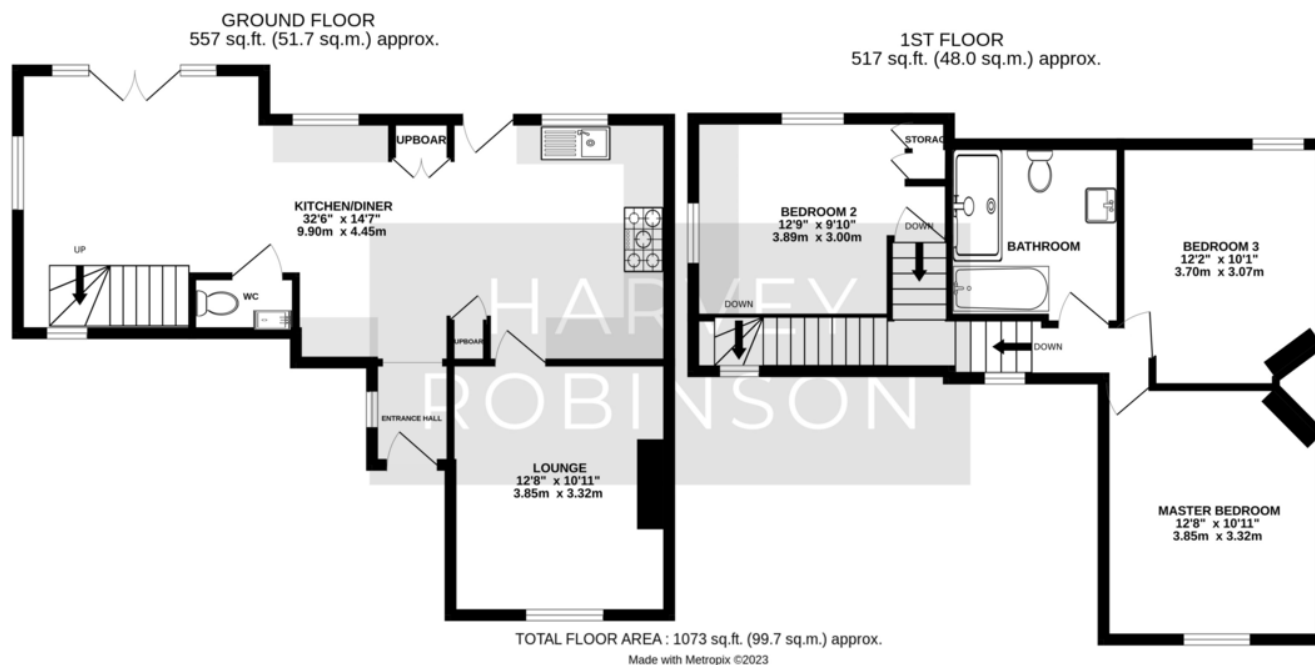
St Ives has a huge amount to offer homebuyers, including a scenic riverside location, plenty of large family properties, and great local amenities, to name just a few. In St Ives you will find plenty of shops including Waitrose along with some great independent stores and cafes, as well as the Great River Ouse. The pubs are also highly rated by residents, and you'll find plenty of great restaurants in the area.

Close by you will also find a Morrisons & Aldi super market along with various other restaurants.









### FAQs

Built: 1900 approximately

Tenure: Freehold

Listed: No

Alterations: Current Owners have undertaken a Two Storey Extension, Full Renovation and New Garage

Current Owners: Owned Property for 8

Years, Relocation Out Of Area

Rear Garden: South West Facing

Primary School Catchment: Houghton

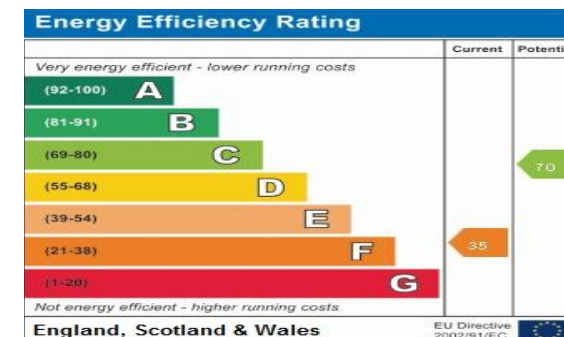
Primary

Secondary School Catchment: St Peters

Water Meter: No

Boiler: Installed 2016

Loft: Ladder



Agents Note: Whilst every care has been taken to prepare these particulars, they are for guidance purposes only. All measurements are approximate and are for general guidance purposes only and whilst every care has been taken to ensure their accuracy, they should not be relied upon and potential buyers/tenants are advised to recheck the measurements

HARVEY ROBINSON

### OFFICE ADDRESS

91 High Street, Huntingdon,  
Cambridgeshire, PE29 3DP

### CONTACT

01480 454040  
huntingdon@harveyrobinson.co.uk  
www.harveyrobinson.co.uk