



HARVEY ROBINSON

£499,750

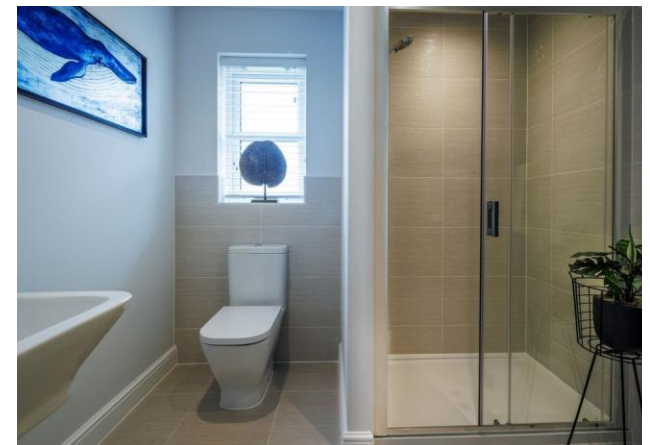
4 Windsor Road

Alconbury Weald, PE28 4XL

****NEW BUILD / PART EXCHANGE CONSIDERED****

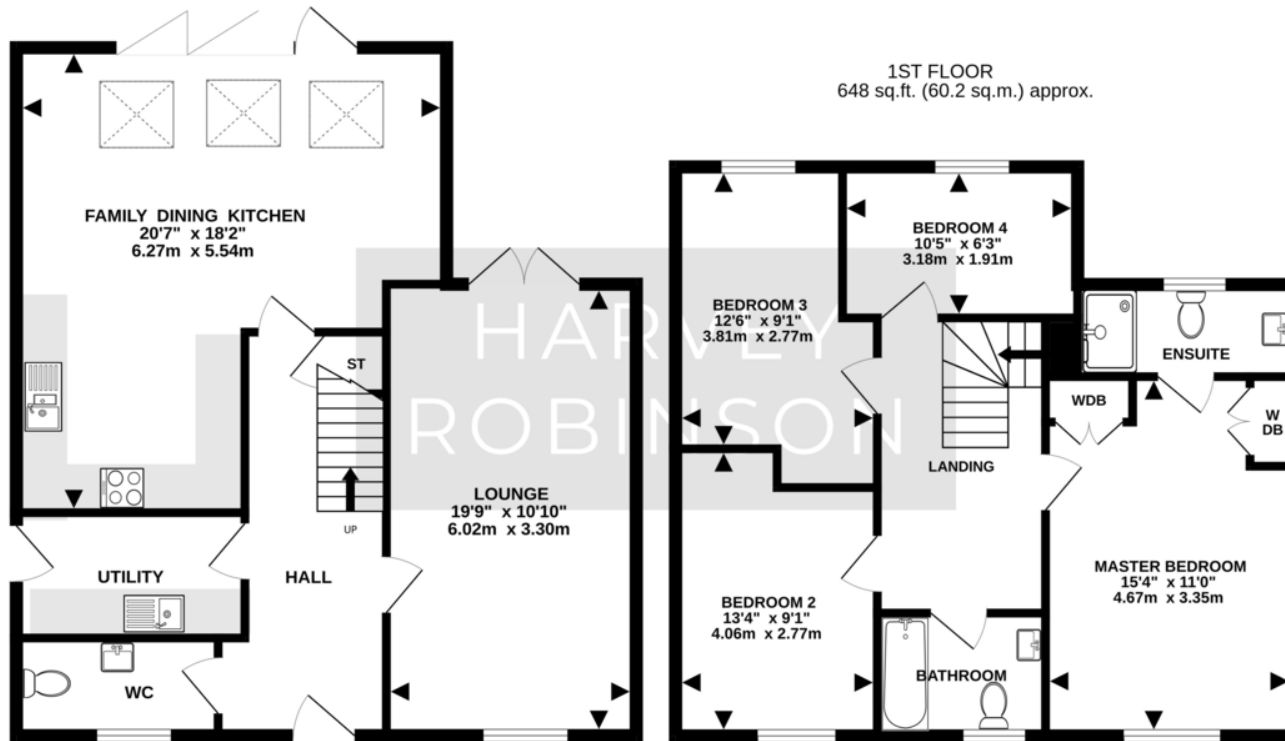
Award winning estate agents Harvey Robinson, Huntingdon, are delighted to offer For Sale this generous, four bedroom executive detached family home with single garage. Located in the exciting new development of Alconbury Weald with easy access to Huntingdon with its high speed train link to London Kings Cross and access to major road links. 'The Waddesdon' is a well-designed and spacious family home being approximately 1410 Sq.ft. Benefiting downstairs from a 19ft lounge, 'L' shaped 18ft kitchen/dining/family room with vaulted ceiling, utility room and cloakroom. Upstairs there are four bedrooms with ensuite to master and a family bathroom. Outside there is a single garage plus ample driveway parking and gardens to front and rear. The Alconbury Weald development has a variety of amenities which already include a brand new school, gym, convenience store, co-op supermarket and a restaurant.

- 4 
- 3 
- 2 





GROUND FLOOR
760 sq.ft. (70.6 sq.m.) approx.



TOTAL FLOOR AREA : 1410sq.ft. (131.0 sq.m.) approx.
Made with Metropix ©2023

FAQs

Ready to move in!
Newly built
LABC 10 year warranty
Part-Exchange considered
Upgraded kitchen and bathrooms
Upgraded internal finishes
Move in 28 days!
Includes £10,000 towards deposit

EPC TO FOLLOW

Agents Note: Whilst every care has been taken to prepare these particulars, they are for guidance purposes only. All measurements are approximate and are for general guidance purposes only and whilst every care has been taken to ensure their accuracy, they should not be relied upon and potential buyers/tenants are advised to recheck the measurements

HARVEY ROBINSON

OFFICE ADDRESS

91 High Street, Huntingdon,
Cambridgeshire, PE29 3DP

CONTACT

01480 454040
huntingdon@harveyrobinson.co.uk
www.harveyrobinson.co.uk