



*jordan fishwick*

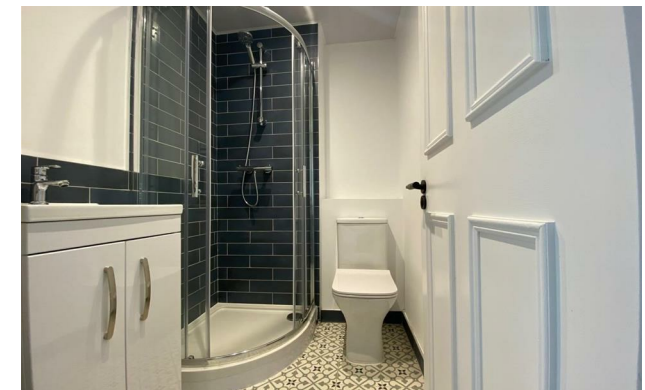
16 Warwick Road, Chorlton, M21 0AU  
Guide Price £1,250 Per Calendar Month





## Warwick Road Manchester M21 0AU

£1,250 Per Calendar Month



### The Property

\*\*\*\* AVAILABLE NOW \*\*\*\* We are excited to offer this one bedroom property within a newly renovated period property of three apartments on a highly regarded road within the heart of Chorlton.


This first floor apartment has been fitted with a modern bathroom and kitchen with integrated appliances. The development is a rare opportunity to have a brand new renovated property close to all amenities and finished to a high standard. On entrance to the property you enter from the communal hall, to the first floor you enter the apartment leading into your own entrance hall with Large open plan lounge/kitchen all appliances included and blinds fitted, bathroom with shower cubicle, bedroom with addition office/dressing room off the bedroom. One not to be missed!

\*\*\*\*\* To arrange a viewing please call 0161 860 4444 \*\*\*\*\*



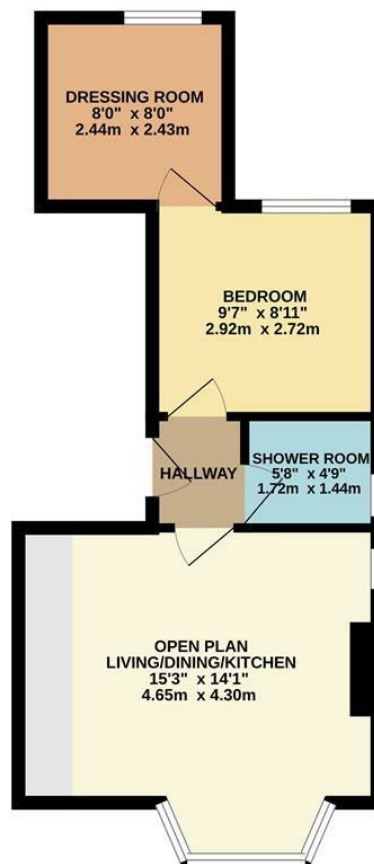
- Council Tax Band A - EPC C
- First Floor One Bedroom with Dressing room
- Dressing Room
- Newly Renovated
- Modern Kitchen & Bathroom
- Off road parking
- Available Now



Energy Efficiency Rating		
	Current	Potential
Very energy efficient - lower running costs		
(92 plus) <b>A</b>		
(81-91) <b>B</b>		
(69-80) <b>C</b>	73	78
(55-68) <b>D</b>		
(39-54) <b>E</b>		
(21-38) <b>F</b>		
(1-20) <b>G</b>		
Not energy efficient - higher running costs		
<b>England &amp; Wales</b>		EU Directive 2002/91/EC 



FIRST FLOOR  
385 sq.ft. (35.8 sq.m.) approx.



TOTAL FLOOR AREA : 385 sq.ft. (35.8 sq.m.) approx.  
Measurements are approximate. Not to scale. Illustrative purposes only.  
Made with Metropix ©2025



These particulars are believed to be accurate but they are not guaranteed and do not form a contract. Neither Jordan Fishwick nor the vendor or lessor accept any responsibility in respect of these particulars, which are not intended to be statements or representations of fact and any intending purchaser or lessee must satisfy himself by inspection or otherwise as to the correctness of each of the statements contained in these particulars. Any floorplans on this brochure are for illustrative purposes only and are not necessarily to scale.

Offices at: Chorlton, Didsbury, Disley, Hale, Glossop, Macclesfield, Manchester Deansgate, Manchester Whitworth Street, New Mills, Sale, Wilmslow and Withington