



jordanfishwick

Littler Avenue
Chorlton



The Property

**** AVAILABLE NOW **** A well presented three bedroom semi detached property ideally situated for transport links to Manchester City Centre. Benefitting from large mature gardens to both the front and rear, this property has been tastefully decorated and boasts a modern fully fitted kitchen with gas hob and large living room. Ideal for a family or couple, the spacious accommodation briefly comprises: Entrance hallway, lounge diner, kitchen. To the first floor there are three double bedrooms, the main bedroom with fitted wardrobes, as well as a shower room and separate w/c. This property has double glazing throughout, as well as gas central heating. Part furnished, not available to sharers.

***** To arrange a viewing please call 0161 860 4444 *****

Directions

Little Avenue Chorlton M21 7WA

£1,395 Per Calendar Month



- Council Tax Band A - EPC D
- 3 Bedroom
- Part Furnished
- Large Garden
- Modern Kitchen
- Quiet cul-de-sac
- Available Now

Postcode - M21 7WA

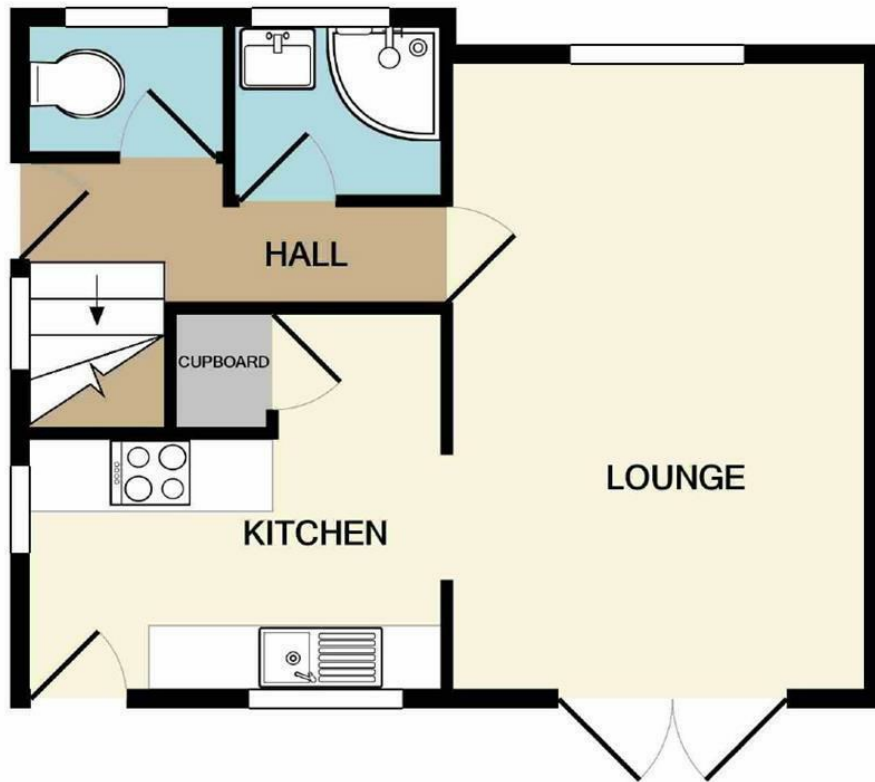
EPC Rating - D

Floor Area - sq ft

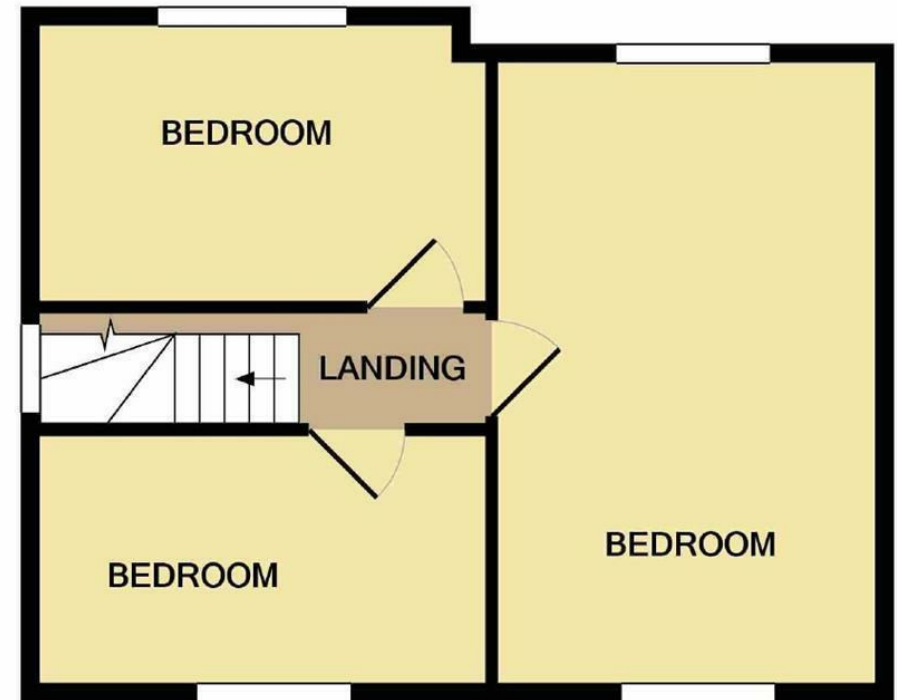
Local Authority - Manchester

Council Tax - A





GROUND FLOOR
APPROX. FLOOR
AREA 375 SQ.FT.
(34.8 SQ.M.)



1ST FLOOR
APPROX. FLOOR
AREA 372 SQ.FT.
(34.5 SQ.M.)

TOTAL APPROX. FLOOR AREA 747 SQ.FT. (69.4 SQ.M.)
Measurements are approximate. Not to scale. Illustrative purposes only
Made with Metropix ©2021



These particulars are believed to be accurate but they are not guaranteed and do not form a contract. Neither Jordan Fishwick nor the vendor or lessor accept any responsibility in respect of these particulars, which are not intended to be statements or representations of fact and any intending purchaser or lessee must satisfy himself by inspection or otherwise as to the correctness of each of the statements contained in these particulars. Any floorplans on this brochure are for illustrative purposes only and are not necessarily to scale.

Offices at: Offices at Chorlton, Didsbury, Disley, Hale, Glossop, Macclesfield, Manchester Deansgate, Manchester Whitworth Street, New Mills, Sale, Wilmslow and Withington

410-412 Barlow Moor Road, Chorlton, Manchester, M21

01618604444^{8AD}

chorlton@jordanfishwick.co.uk
www.jordanfishwick.co.uk