



jordanfishwick

Warwick Road
Chorlton



Warwick Road Chorlton M21 0AX

£975 Per Calendar Month



The Property

**** AVAILABLE JULY **** This spacious one bedroom top floor flat is situated in the centre of Chorlton within walking distance to the many bars/cares shops and the ever popular Beech Road & Chorlton Green. The property has its own balcony leading from the lounge giving a birds eye view over Chorlton, the metro link to town is 2 minutes away making this flat the perfect home for quick town access. On entrance to the flat there is a well maintained communal area, entrance hall, good sized lounge & dining area, kitchen with all appliances, large double bedroom with views over Chorlton and a bathroom with shower over bath. Fully Furnished. Parking available.
***** To view please call 0161 393 7539 or email yasminedowe@jordanfishwick.co.uk *****

Directions

- Council tax Band A - EPC C
- One Bedroom - Top Floor
- Furnished
- Parking
- Central Chorlton
- Balcony
- Available July

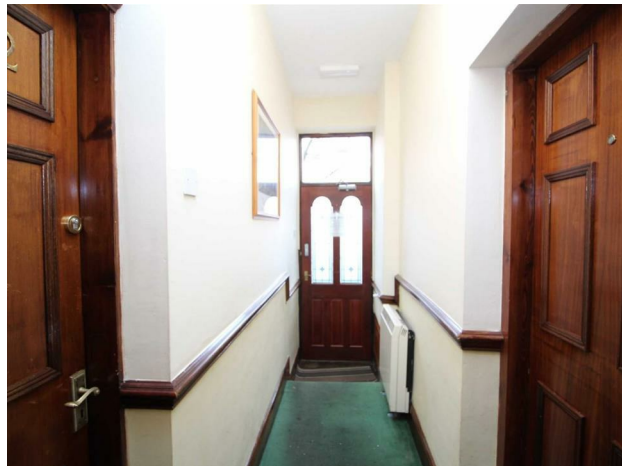
Postcode - M21 0AX

EPC Rating - C

Floor Area - sq ft

Local Authority - Manchester

Council Tax - A





These particulars are believed to be accurate but they are not guaranteed and do not form a contract. Neither Jordan Fishwick nor the vendor or lessor accept any responsibility in respect of these particulars, which are not intended to be statements or representations of fact and any intending purchaser or lessee must satisfy himself by inspection or otherwise as to the correctness of each of the statements contained in these particulars. Any floorplans on this brochure are for illustrative purposes only and are not necessarily to scale.

Offices at: Offices at Chorlton, Didsbury, Disley, Hale, Glossop, Macclesfield, Manchester Deansgate, Manchester Whitworth Street, New Mills, Sale, Wilmslow and Withington

410-412 Barlow Moor Road, Chorlton, Manchester, M21

01618604444^{8AD}

chorlton@jordanfishwick.co.uk
www.jordanfishwick.co.uk