



jordanfishwick

Brantingham Road
Chorlton



Brantingham Road Chorlton M21 0DZ

£1,650 Per Calendar Month



The Property

**** AVAILABLE JUNE **** This modern and spacious three bedroomed semi-detached house is only a short walk to the centre of Chorlton, Metrolink and local cafes, bars & shops. As you enter the property there is a light and well presented entrance hall with downstairs wc leading through to a spacious lounge, dining kitchen with full range of appliances, master double bedroom with stylish en-suite shower room, two further double bedrooms, stylish family bathroom, excellent sized south facing rear garden backing onto the cricket pitch and driveway providing off road parking for two cars. Double glazing and central heating are installed throughout. This property is one not to be missed and in catchment for highly regarded ideal for a family looking to settle in the ever popular Chorlton. Fully Furnished.

***** To arrange a viewing please call 0161 393 7539 *****

Directions

- Council Tax Band C - EPC C

- Semi Detached House

- 3 Double Bedrooms

- Stylish, Contemporary Kitchen

- 2 Bathrooms

- Fully Furnished

- Available June

Postcode - M21 0DZ

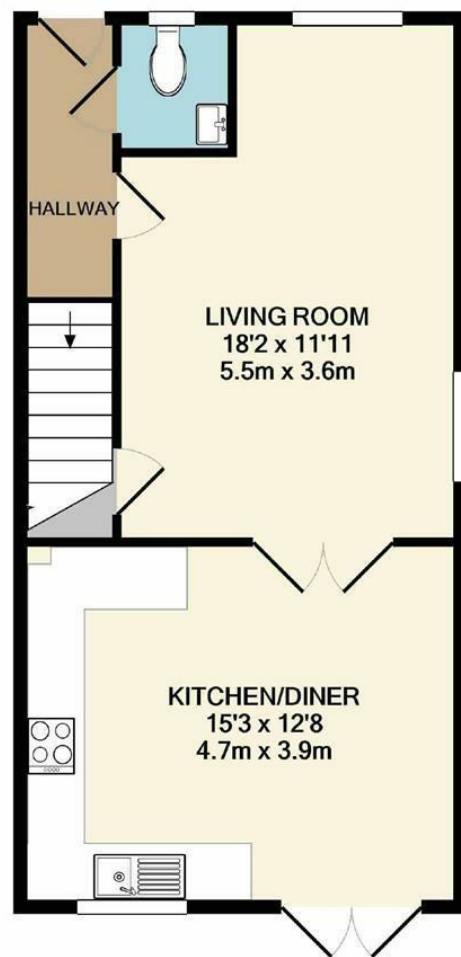
EPC Rating - C

Floor Area - sq ft

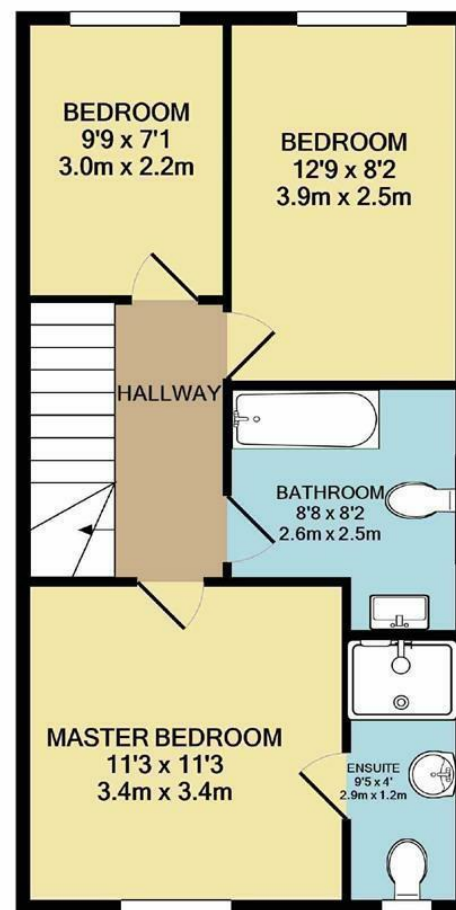
Local Authority - Manchester City Council

Council Tax - C





GROUND FLOOR



1ST FLOOR

TOTAL APPROX. FLOOR AREA 10355 SQ.FT. (962.0 SQ.M.)
 Measurements are approximate. Not to scale. Illustrative purposes only
 Made with Metropix ©2021



These particulars are believed to be accurate but they are not guaranteed and do not form a contract. Neither Jordan Fishwick nor the vendor or lessor accept any responsibility in respect of these particulars, which are not intended to be statements or representations of fact and any intending purchaser or lessee must satisfy himself by inspection or otherwise as to the correctness of each of the statements contained in these particulars. Any floorplans on this brochure are for illustrative purposes only and are not necessarily to scale.

Offices at: Offices at Chorlton, Didsbury, Disley, Hale, Glossop, Macclesfield, Manchester Deansgate, Manchester Whitworth Street, New Mills, Sale, Wilmslow and Withington

410-412 Barlow Moor Road, Chorlton, Manchester, M21
 8AD

www.jordanfishwick.co.uk