



jordanfishwick

Provis Road
Chorlton



The Property

**** AVAILABLE JULY **** We are delighted to bring back to the market this beautifully presented 2 bedroom Victorian Terrace. Situated in the Chorlton Green area with the ever popular Beech road with its many cafes, bars, boutique shops, highly regarded primary schools and Chorlton Ee's. The property has been finished to a high standard and will make a perfect home for a professional couple or small family. The property comprises of: entrance hall, two receptions rooms open plan, large kitchen/diner, family bathroom, two double bedrooms. To the rear of the property there is a courtyard garden with gated alleyway.

***** To arrange a viewing please call 0161 393 7539 *****

Directions

Provis Road Chorlton M21 9EW

£1,550 Per Calendar Month



- Council Tax Band B - EPC D
- 2 Bedroom Victorian Terrace
- Courtyard Garden
- Beech Road location
- Stylishly presented
- Part furnished
- Available July

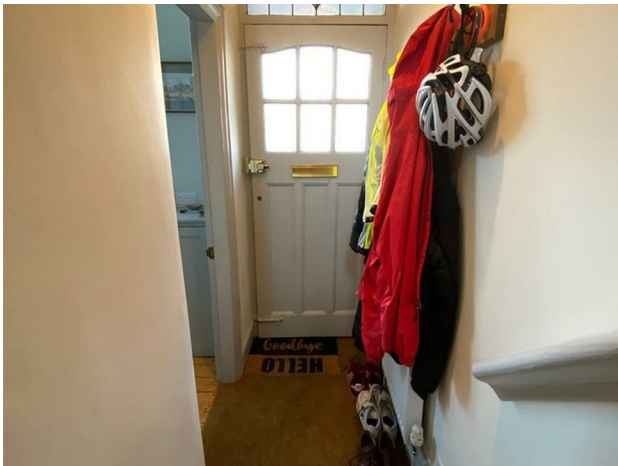
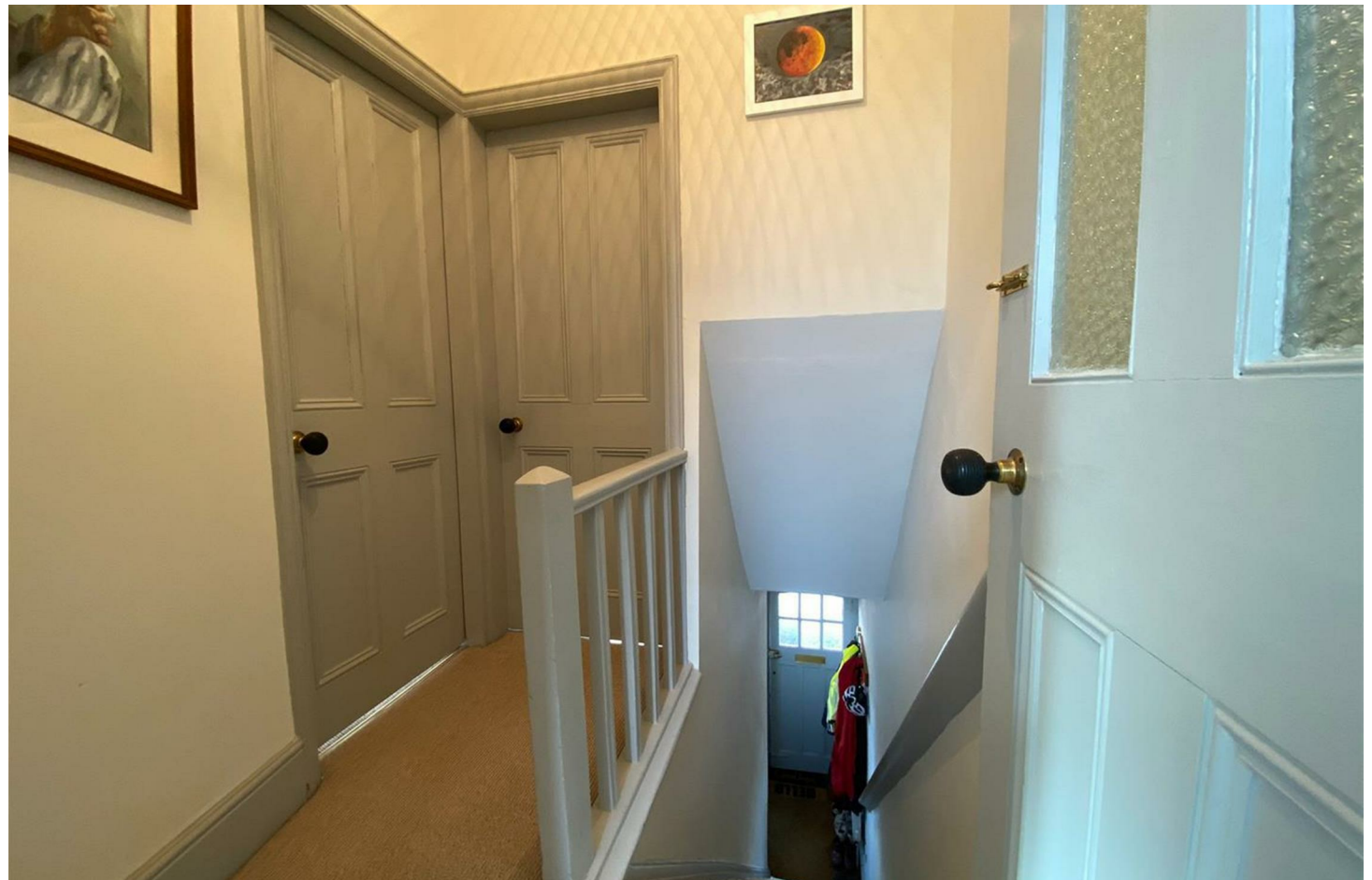
Postcode - M21 9EW

EPC Rating - D

Floor Area - sq ft

Local Authority - Manchester

Council Tax - B





These particulars are believed to be accurate but they are not guaranteed and do not form a contract. Neither Jordan Fishwick nor the vendor or lessor accept any responsibility in respect of these particulars, which are not intended to be statements or representations of fact and any intending purchaser or lessee must satisfy himself by inspection or otherwise as to the correctness of each of the statements contained in these particulars. Any floorplans on this brochure are for illustrative purposes only and are not necessarily to scale.

Offices at: Offices at Chorlton, Didsbury, Disley, Hale, Glossop, Macclesfield, Manchester Deansgate, Manchester Whitworth Street, New Mills, Sale, Wilmslow and Withington

410-412 Barlow Moor Road, Chorlton, Manchester, M21
8AD

www.jordanfishwick.co.uk