



jordanfishwick

Nell Lane
Chorlton



Nell Lane Chorlton M21 7DA

£1,695 Per Calendar Month



The Property

**** AVAILABLE NOW **** Jordan Fishwick are delighted to offer this splendid family home over 3 floors offering spacious and light accommodation throughout. The property is close to all local transport links, Chorlton Park, highly regarded Primary and High Schools and within walking distance to both Chorlton Village and West Didsbury. The property offers allocated parking with direct access through the rear garden. This delightful property will prove ideal for a family or professional couple due to the space available and proximity to all local amenities, City Centre and Metrolink. The accommodation briefly comprises: porch, entrance hallway, reception/dining room, fully fitted kitchen with appliances. The first floor offers large lounge, one bedroom. Second floor offers large main bedroom with en-suite and one further smaller bedroom. Double glazing is installed throughout and there is gas central heating. The property is not available to sharers. A viewing comes highly recommended.

***** To arrange a viewing please call 0161 393 7539

Directions

- Council Tax Band D - EPC C
- 3 Bedroom & 3 Bathroom
- Town house over 3 floors
- Allocated parking
- Enclosed private Garden
- Unfurnished
- Available Now

Postcode - M21 7DA

EPC Rating - C

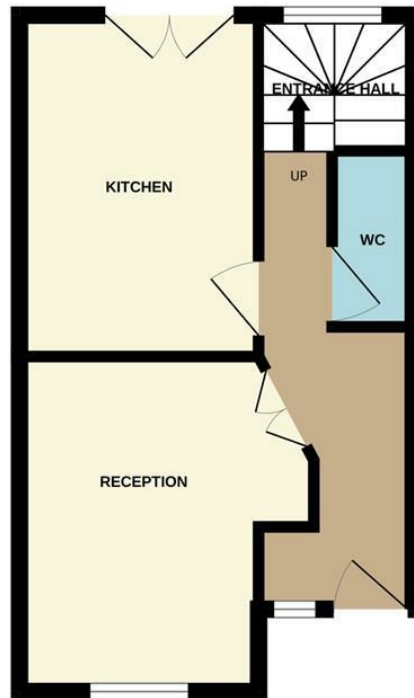
Floor Area - sq ft

Local Authority - Manchester

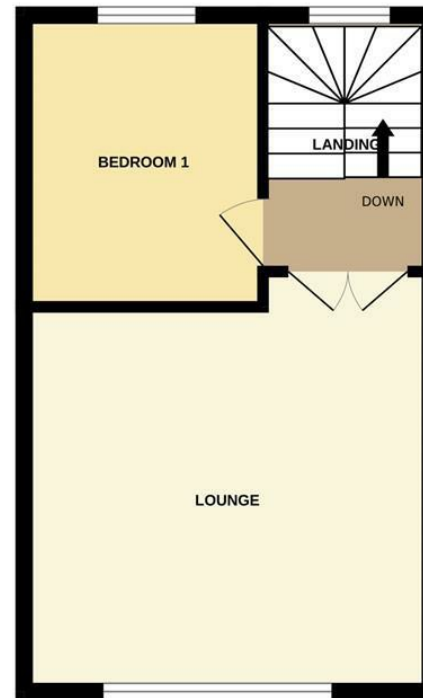
Council Tax - D



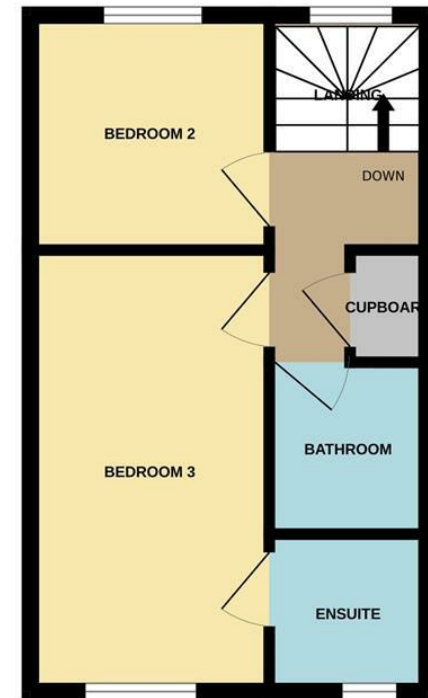
GROUND FLOOR



1ST FLOOR



2ND FLOOR



Whilst every attempt has been made to ensure the accuracy of the floorplan contained here, measurements of doors, windows, rooms and any other items are approximate and no responsibility is taken for any error, omission or mis-statement. This plan is for illustrative purposes only and should be used as such by any prospective purchaser. The services, systems and appliances shown have not been tested and no guarantee as to their operability or efficiency can be given.
Made with Metropix ©2025



These particulars are believed to be accurate but they are not guaranteed and do not form a contract. Neither Jordan Fishwick nor the vendor or lessor accept any responsibility in respect of these particulars, which are not intended to be statements or representations of fact and any intending purchaser or lessee must satisfy himself by inspection or otherwise as to the correctness of each of the statements contained in these particulars. Any floorplans on this brochure are for illustrative purposes only and are not necessarily to scale.

Offices at: Offices at Chorlton, Didsbury, Disley, Hale, Glossop, Macclesfield, Manchester Deansgate, Manchester Whitworth Street, New Mills, Sale, Wilmslow and Withington

410-412 Barlow Moor Road, Chorlton, Manchester, M21
8AD

www.jordanfishwick.co.uk