



jordanfishwick

Beech Road  
Chorlton





## Beech Road Chorlton M21 9EL

£1,350 Per Calendar Month



### The Property

\*\*\*\* AVAILABLE NOW \*\*\*\* Jordan Fishwick are super excited to offer this stunning spacious & light two Doubled bedroom First floor apartment situated in the heart of Beech Road.

This property is one not to be missed and would ideally suit a professional couple or two individual sharers. The property offers attractive communal entrance with large communal entrance hall, Internal hallway, large lounge/dining/kitchen, large bathroom with shower over bath, Two Double bedrooms one with large store cupboard, both bedrooms have a Juliet balcony with a private view of Creative recycling gardens. Close to all amenities, transport links and of course all the cafes, individual shops, bars and restaurants that Beech Road has to offer. The property is offered as unfurnished. Gas central heating and double glazed throughout.

\*\*\*\*\* To arrange a viewing please call 0161 393 7539 \*\*\*\*\*

### Directions

- Council Tax Ban A - EPC E
- 2 Double Bedroom & Large Bedroom
- Chorlton Green location
- Second Floor
- Spacious throughout
- Unfrunished
- Available Now

Postcode - M21 9EL

EPC Rating - E

Floor Area - sq ft

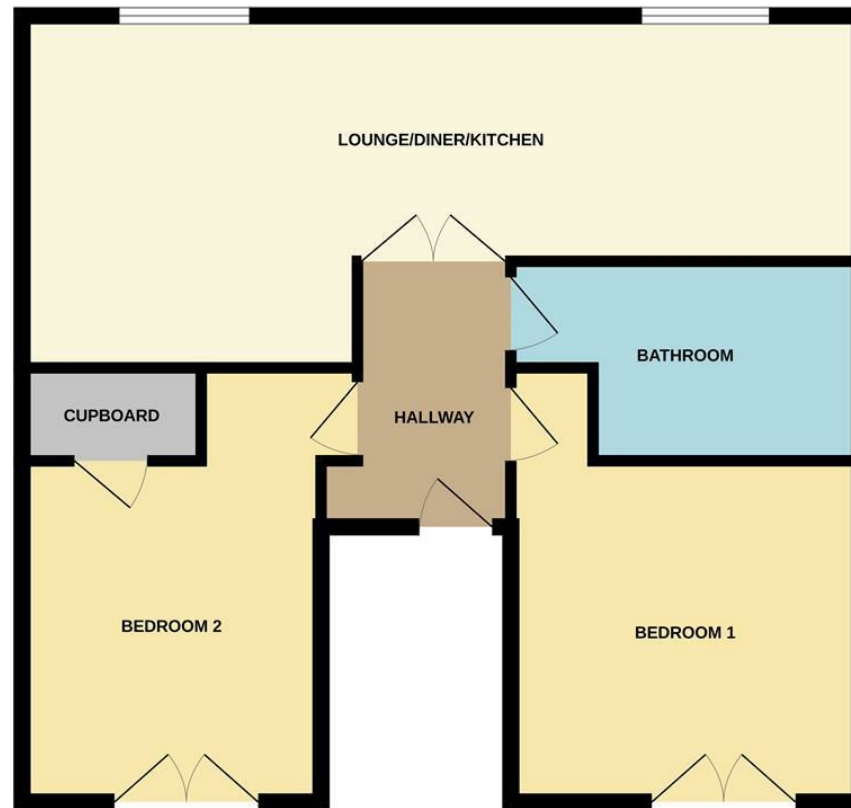
Local Authority - Manchester

Council Tax - A





## SECOND FLOOR



Whilst every attempt has been made to ensure the accuracy of the floorplan contained here, measurements of doors, windows, rooms and any other items are approximate and no responsibility is taken for any error, omission or mis-statement. This plan is for illustrative purposes only and should be used as such by any prospective purchaser. The services, systems and appliances shown have not been tested and no guarantee as to their operability or efficiency can be given.  
Made with Metropix ©2025



These particulars are believed to be accurate but they are not guaranteed and do not form a contract. Neither Jordan Fishwick nor the vendor or lessor accept any responsibility in respect of these particulars, which are not intended to be statements or representations of fact and any intending purchaser or lessee must satisfy himself by inspection or otherwise as to the correctness of each of the statements contained in these particulars. Any floorplans on this brochure are for illustrative purposes only and are not necessarily to scale.

Offices at: Offices at Chorlton, Didsbury, Disley, Hale, Glossop, Macclesfield, Manchester Deansgate, Manchester Whitworth Street, New Mills, Sale, Wilmslow and Withington

410-412 Barlow Moor Road, Chorlton, Manchester, M21  
8AD

[www.jordanfishwick.co.uk](http://www.jordanfishwick.co.uk)