



*jordanfishwick*

Floyd Avenue  
Chorlton





# Floyd Avenue Chorlton M21 7LU

£1,595 Per Calendar Month



## The Property

\*\*\*\* AVAILABLE NOW \*\*\*\* Jordan Fishwick are delighted to offer this well presented semi detached property with light and spacious accommodation ideal for a professional couple or growing family. The property is offered in stylish order throughout and comprises briefly: entrance hall, lounge, dining room, kitchen and cloakroom. To the first floor there are three bedrooms and family bathroom with separate WC. There is Gas central heating and double glazing throughout. To the rear there is a large garden and to the front there is a secure parking for two cars. The property is situated within catchment for desirable Primary and High schools. Viewing of this property is highly recommended.

\*\*\*\*\* To arrange a viewing please call 0161 393 7539 \*\*\*\*\*

## Directions

- Council Tax Band A - EPC C
- 3 Bedroom
- Secure off road parking for 2 cars
- Large Garden to the rear
- Well presented Semi detached
- Catchment for highly regarded schools
- Available Now

Postcode - M21 7LU

EPC Rating - C

Floor Area - sq ft

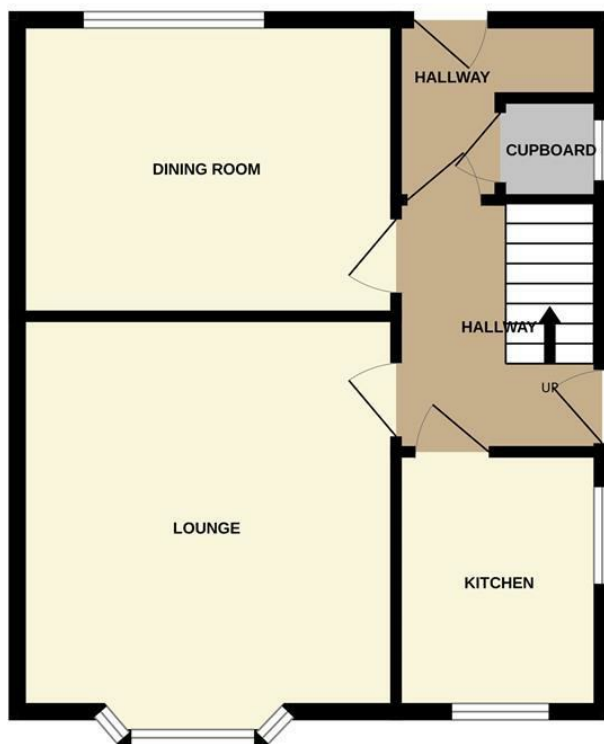
Local Authority - Manchester

Council Tax - A

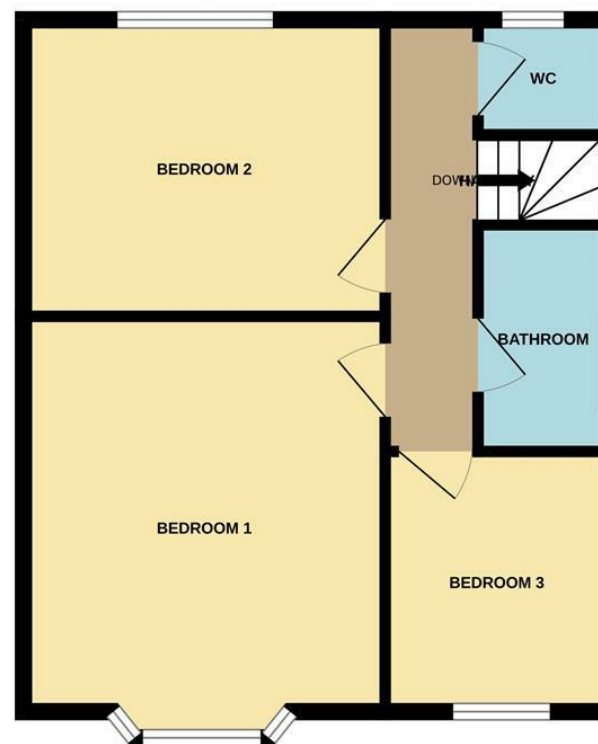




GROUND FLOOR



1ST FLOOR



Whilst every attempt has been made to ensure the accuracy of the floorplan contained here, measurements of doors, windows, rooms and any other items are approximate and no responsibility is taken for any error, omission or mis-statement. This plan is for illustrative purposes only and should be used as such by any prospective purchaser. The services, systems and appliances shown have not been tested and no guarantee as to their operability or efficiency can be given.  
Made with Metropix ©2025



These particulars are believed to be accurate but they are not guaranteed and do not form a contract. Neither Jordan Fishwick nor the vendor or lessor accept any responsibility in respect of these particulars, which are not intended to be statements or representations of fact and any intending purchaser or lessee must satisfy himself by inspection or otherwise as to the correctness of each of the statements contained in these particulars. Any floorplans on this brochure are for illustrative purposes only and are not necessarily to scale.

Offices at: Offices at Chorlton, Didsbury, Disley, Hale, Glossop, Macclesfield, Manchester Deansgate, Manchester Whitworth Street, New Mills, Sale, Wilmslow and Withington

410-412 Barlow Moor Road, Chorlton, Manchester, M21  
8AD

[www.jordanfishwick.co.uk](http://www.jordanfishwick.co.uk)