



Jordan fishwick

Regent Court
Whalley Range



Regent Court Whalley Range M16 0DZ

£1,295 Per Calendar Month



The Property

**** AVAILABLE NOW **** We are delighted to offer to the market this well presented spacious second floor two bedroom apartment which would be ideal for the professional couple or two professional sharers. Regent Court remains one of the most highly-regarded developments in the Chorlton and Whalley Range areas, situated close to all local transport links and only a short walk from Chorlton town centre. The accommodation comprises briefly; private large entrance hallway, open plan lounge/dining/kitchen with balcony, master bedroom with en-suite shower room and private balcony, second double bedroom with joint access to lounge balcony and large main bathroom. The property also benefits from useful storage space, double glazing throughout, new boiler and secure underground parking for 2 cars. Unfurnished.

***** To arrange a viewing please call 0161 393 7539 *****

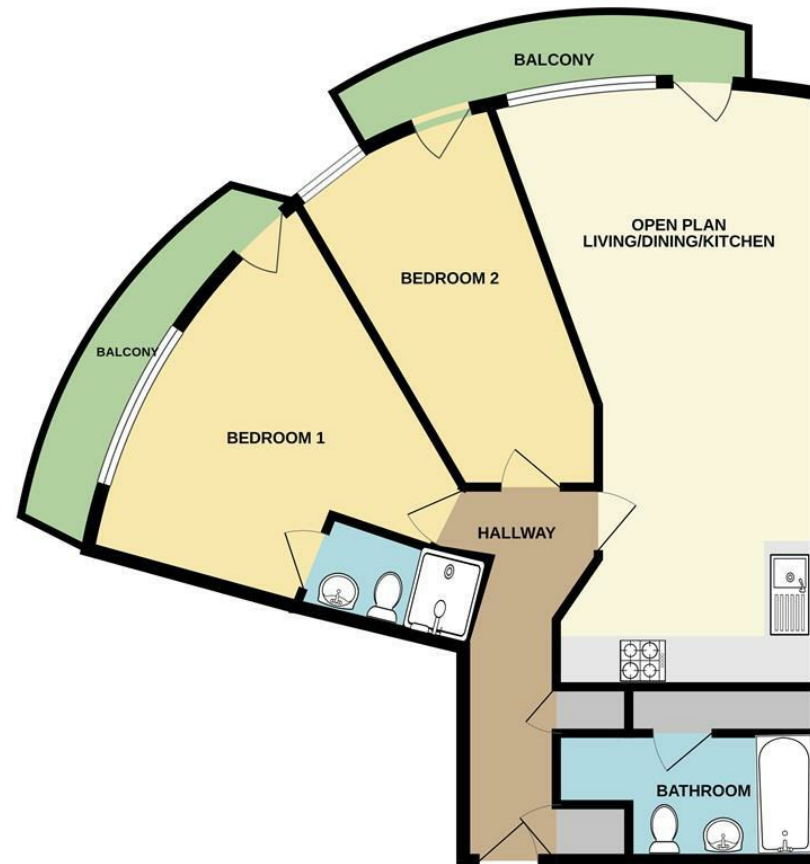
Directions

- Council tax Band B - EPC Grade C
- Two Double Bedroom & Two bathroom
- Spacious and Light throughout
- Secure underground Parking
- Unfurnished
- Close to all Transport links
- Available Now

Postcode - M16 0DZ
EPC Rating - C
Floor Area - sq ft
Local Authority - Manchester
Council Tax - B



GROUND FLOOR



Whilst every attempt has been made to ensure the accuracy of the floorplan contained here, measurements of doors, windows, rooms and any other items are approximate and no responsibility is taken for any error, omission or mis-statement. This plan is for illustrative purposes only and should be used as such by any prospective purchaser. The services, systems and appliances shown have not been tested and no guarantee as to their operability or efficiency can be given.
Made with Metropix ©2024



These particulars are believed to be accurate but they are not guaranteed and do not form a contract. Neither Jordan Fishwick nor the vendor or lessor accept any responsibility in respect of these particulars, which are not intended to be statements or representations of fact and any intending purchaser or lessee must satisfy himself by inspection or otherwise as to the correctness of each of the statements contained in these particulars. Any floorplans on this brochure are for illustrative purposes only and are not necessarily to scale.

Offices at: Offices at Chorlton, Didsbury, Disley, Hale, Glossop, Macclesfield, Manchester Deansgate, Manchester Whitworth Street, New Mills, Sale, Wilmslow and Withington

410-412 Barlow Moor Road, Chorlton, Manchester, M21
8AD

www.jordanfishwick.co.uk