



*Jordan fishwick*

Mayfield Mansions  
Whalley Range





## Mayfield Mansions Whalley Range M16 8EZ

£1,350 Per Calendar Month



### The Property

\*\*\*\* AVAILABLE NOW \*\*\*\* Jordan Fishwick are delighted to offer this two Double Bedroom Apartment well placed opposite Alexandra Park and within a popular Development Mayfield Mansions.

A superb apartment provides secure off road parking and maintained communal garden area. This development is ideally placed for all local amenities, transport links, Chorlton and City Centre. The spacious accommodation briefly comprises: communal entrance, hallway, large and light open plan lounge/dining room/kitchen with integrated appliances, two Double bedrooms, modern bathroom with modern three piece suite and shower over bath. There is parquet flooring throughout and the is offered as Furnished. Double Glazing and central heating fitted throughout. Sharers welcome.

One not to be missed!

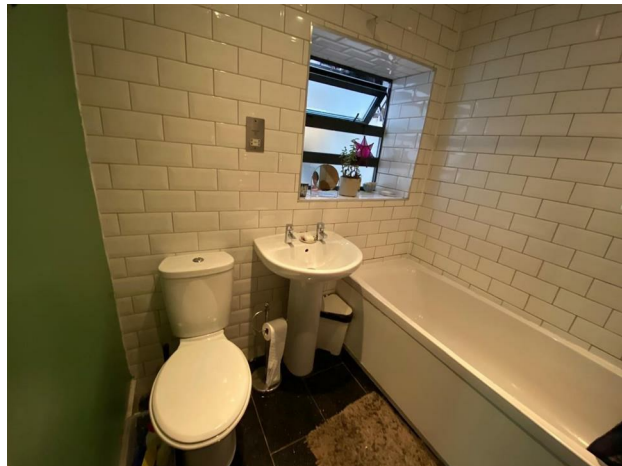
\*\*\*\*\* To arrange a viewing please call 0161 393 7539

\*\*\*\*\*

### Directions

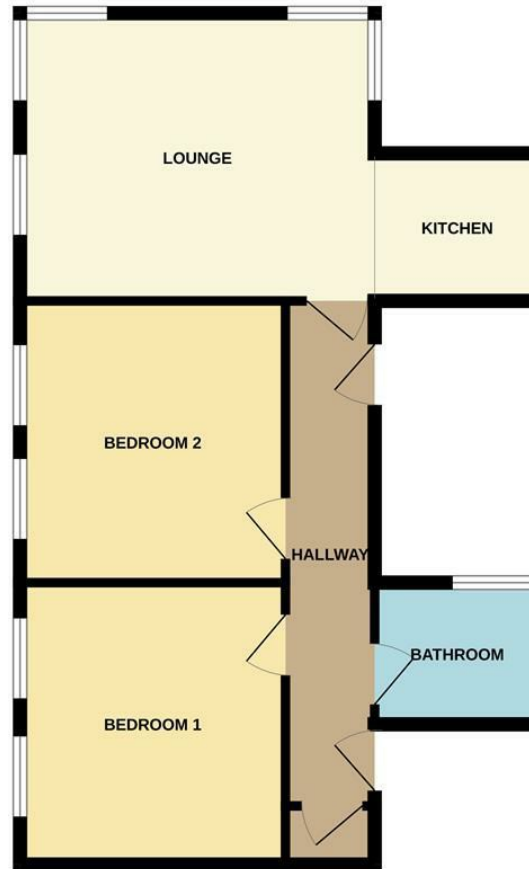
- Council Tax Band A - EPC B
- Popular Development Mayfield Mansions
- 2 Double bedroom
- Secure off road parking
- Part Furnished
- Close to all amenities and Transport links
- Available Now

Postcode - M16 8EZ  
EPC Rating - B  
Floor Area - sq ft  
Local Authority - Manchester  
Council Tax - A





FIRST FLOOR  
591 sq.ft. (54.9 sq.m.) approx.



TOTAL FLOOR AREA: 591 sq.ft. (54.9 sq.m.) approx.

Whilst every attempt has been made to ensure the accuracy of the floorplan contained here, measurements of doors, windows, rooms and any other items are approximate and no responsibility is taken for any error, omission or mis-statement. This plan is for illustrative purposes only and should be used as such by any prospective purchaser. The services, systems and appliances shown have not been tested and no guarantee as to their operability or efficiency can be given.  
Made with Metropix ©2024



These particulars are believed to be accurate but they are not guaranteed and do not form a contract. Neither Jordan Fishwick nor the vendor or lessor accept any responsibility in respect of these particulars, which are not intended to be statements or representations of fact and any intending purchaser or lessee must satisfy himself by inspection or otherwise as to the correctness of each of the statements contained in these particulars. Any floorplans on this brochure are for illustrative purposes only and are not necessarily to scale.

Offices at: Offices at Chorlton, Didsbury, Disley, Hale, Glossop, Macclesfield, Manchester Deansgate, Manchester Whitworth Street, New Mills, Sale, Wilmslow and Withington

410-412 Barlow Moor Road, Chorlton, Manchester, M21  
8AD

[www.jordanfishwick.co.uk](http://www.jordanfishwick.co.uk)