



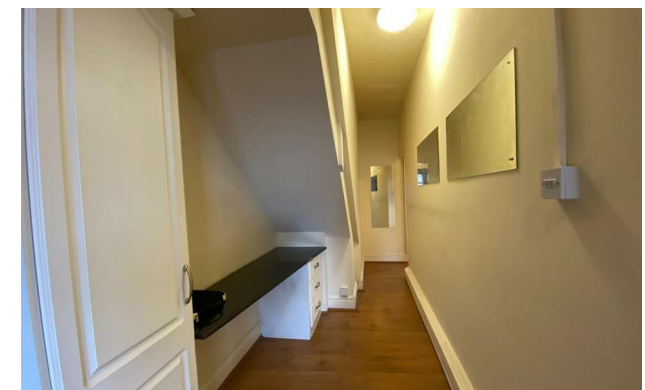
*Jordan fishwick*

Barlow Moor Road  
Chorlton



## Barlow Moor Road Chorlton M21 8AZ

£1,100



### The Property

\*\*\*\* AVAILABLE NOW \*\*\*\* BILLS INCLUDED \*\*\*\* We are excited to offer this One bedroom property situated in the heart of Chorlton above a very popular restaurant Double Zero and close to all Transport links and amenities. The flat comprises of own private entrance at the rear, large entrance hall with built in storage, double bedroom with integrated wardrobe & bedside table, bathroom with shower over bath, large and light open plan lounge/kitchen. fitted with all appliances. The property is offered as Unfurnished. Water and Electric bills included in rent.

\*\*\*\*\* To view please call 0161 393 7539 \*\*\*\*\*

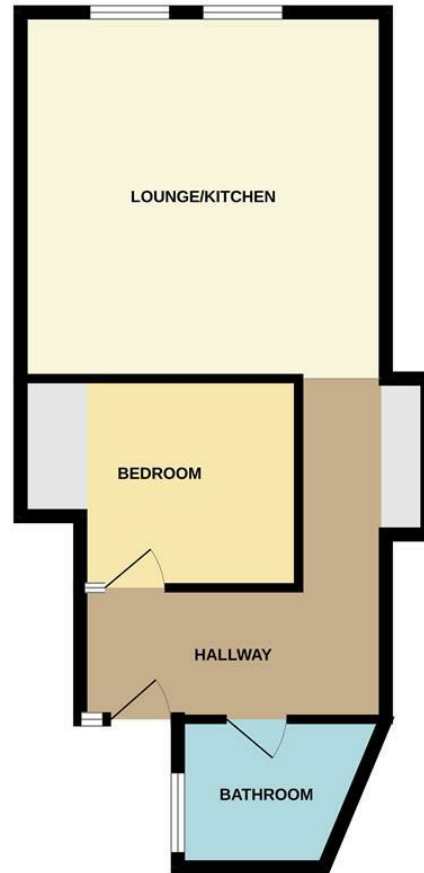
### Directions

- Council Tax Band A - EPC D
- One Bedroom
- Unfurnished
- Bills Included
- Own private entrance
- Chorlton Central location
- Available Now

Postcode - M21 8AZ  
EPC Rating - D  
Floor Area - sq ft  
Local Authority - Manchester  
Council Tax - A



FIRST FLOOR  
485 sq.ft. (45.1 sq.m.) approx.



TOTAL FLOOR AREA: 485 sq.ft. (45.1 sq.m.) approx.

Whilst every attempt has been made to ensure the accuracy of the floorplan contained here, measurements of doors, windows, rooms and any other items are approximate and no responsibility is taken for any error, omission or mis-statement. This plan is for illustrative purposes only and should be used as such by any prospective purchaser. The services, systems and appliances shown have not been tested and no guarantee as to their operability or efficiency can be given.  
Made with Metropix ©2024



These particulars are believed to be accurate but they are not guaranteed and do not form a contract. Neither Jordan Fishwick nor the vendor or lessor accept any responsibility in respect of these particulars, which are not intended to be statements or representations of fact and any intending purchaser or lessee must satisfy himself by inspection or otherwise as to the correctness of each of the statements contained in these particulars. Any floorplans on this brochure are for illustrative purposes only and are not necessarily to scale.

Offices at: Offices at Chorlton, Didsbury, Disley, Hale, Glossop, Macclesfield, Manchester Deansgate, Manchester Whitworth Street, New Mills, Sale, Wilmslow and Withington

410-412 Barlow Moor Road, Chorlton, Manchester, M21  
8AD

[www.jordanfishwick.co.uk](http://www.jordanfishwick.co.uk)