



Jordan fishwick

22 Lytham Avenue, Chorlton, M21 8TF

Guide Price £430,000



**22 Lytham Avenue, Chorlton,
Manchester, M21 8TF**

Guide Price £430,000




The Property

*****NO CHAIN***** Located on a quiet residential CUL-DE-SAC only a stone's throw from Beech Road and Chorlton Village is this beautifully presented THREE BEDROOM END TERRACE PERIOD PROPERTY, offered for sale in MOVE-IN READY CONDITION and boasting a WEST FACING REAR GARDEN. This delightful property benefits from having MANY ORIGINAL FEATURES retained and will prove ideal for a young couple or family, positioned within easy reach of all local amenities, schools, parks and transport links including the Metro (Chorlton, 0.5 Miles). The splendid accommodation briefly comprises: covered porch, entrance hallway, lounge with bay window and original fireplace with bi-folding doors opening to the 15ft dining room, spacious kitchen with patio door opening to the rear courtyard garden. To the first floor are three good sized bedrooms and bathroom, fitted with a modern three piece suite with over bath shower. Double glazing and gas central heating have been installed throughout. Externally, to the front of the property is a walled garden with mature hedgerow offering privacy from the road whilst to the rear, a superb walled courtyard garden enjoys a Westerly aspect and features a large stone flagged patio and beds with timber boundaries. An internal viewing of this fine home is strongly recommended. Sold with no onward chain. Council Tax Band B.

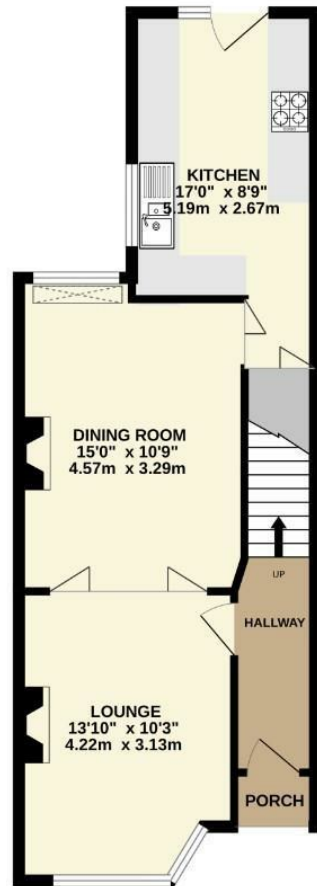
- NO CHAIN
- Superbly presented end terrace period property
- Three bedrooms and two reception rooms
- West facing rear garden
- Quiet residential CUL-DE-SAC only a stone's throw from Beech Road and Chorlton Village
- Many original features retained
- Move-in ready condition
- 0.5 mile walk to the Metro (Chorlton)
- Ideal for young couple or family
- Double glazing and gas central heating throughout



Energy Efficiency Rating		
	Current	Potential
Very energy efficient - lower running costs		
(92 plus) A		
(81-91) B		
(69-80) C		
(55-68) D		
(39-54) E		
(21-38) F		
(1-20) G		
Not energy efficient - higher running costs		
England & Wales	EU Directive 2002/91/EC 	



GROUND FLOOR
504 sq.ft. (46.8 sq.m.) approx.



1ST FLOOR
476 sq.ft. (44.2 sq.m.) approx.



TOTAL FLOOR AREA : 980 sq.ft. (91.0 sq.m.) approx.

Whilst every attempt has been made to ensure the accuracy of the floorplan contained here, measurements of doors, windows, rooms and any other items are approximate and the responsibility is taken for any error, omission or mis-statement. This plan is for illustrative purposes only and should be used as such by any prospective purchaser. The services, systems and appliances shown have not been tested and no guarantee as to their operability or efficiency can be given.
Made with Metropix ©2024



These particulars are believed to be accurate but they are not guaranteed and do not form a contract. Neither Jordan Fishwick nor the vendor or lessor accept any responsibility in respect of these particulars, which are not intended to be statements or representations of fact and any intending purchaser or lessee must satisfy himself by inspection or otherwise as to the correctness of each of the statements contained in these particulars. Any floorplans on this brochure are for illustrative purposes only and are not necessarily to scale.

Offices at: Chorlton, Didsbury, Disley, Hale, Glossop, Macclesfield, Manchester Deansgate, Manchester Whitworth Street, New Mills, Sale, Wilmslow and Withington