



Jordan fishwick

Ryebank Mews
Chorlton



Ryebank Mews Chorlton M21 9LY

£1,350 Per Calendar Month



The Property

**** AVAILABLE AUGUST **** We are delighted to offer this modern mid-mews house based in a quiet residential development in a popular area of Chorlton, close to Longford Park. The accommodation briefly comprises; entrance vestibule, good sized open plan lounge/dining room & kitchen with appliances & storage cupboard, main double bedroom with fitted wardrobes and drawer, single second bedroom and a bathroom with white suite. To the front of the property there is a large lawn which is maintained for you and an external secure storage cupboard. Double glazing and electric heating are installed and an allocated parking space.

***** To arrange a viewing please call 0161 393 7539 *****

Directions

- Council Tax Band B - EPC E
- 2 Bedroom Mews
- Popular Development
- Off Road Parking
- Maintained Garden
- Unfurnished
- Available August

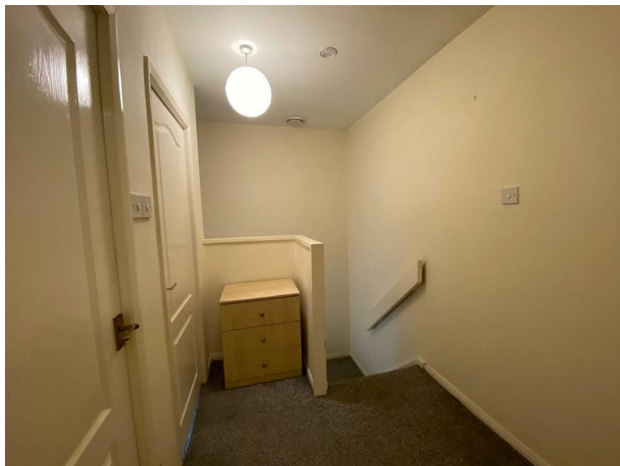
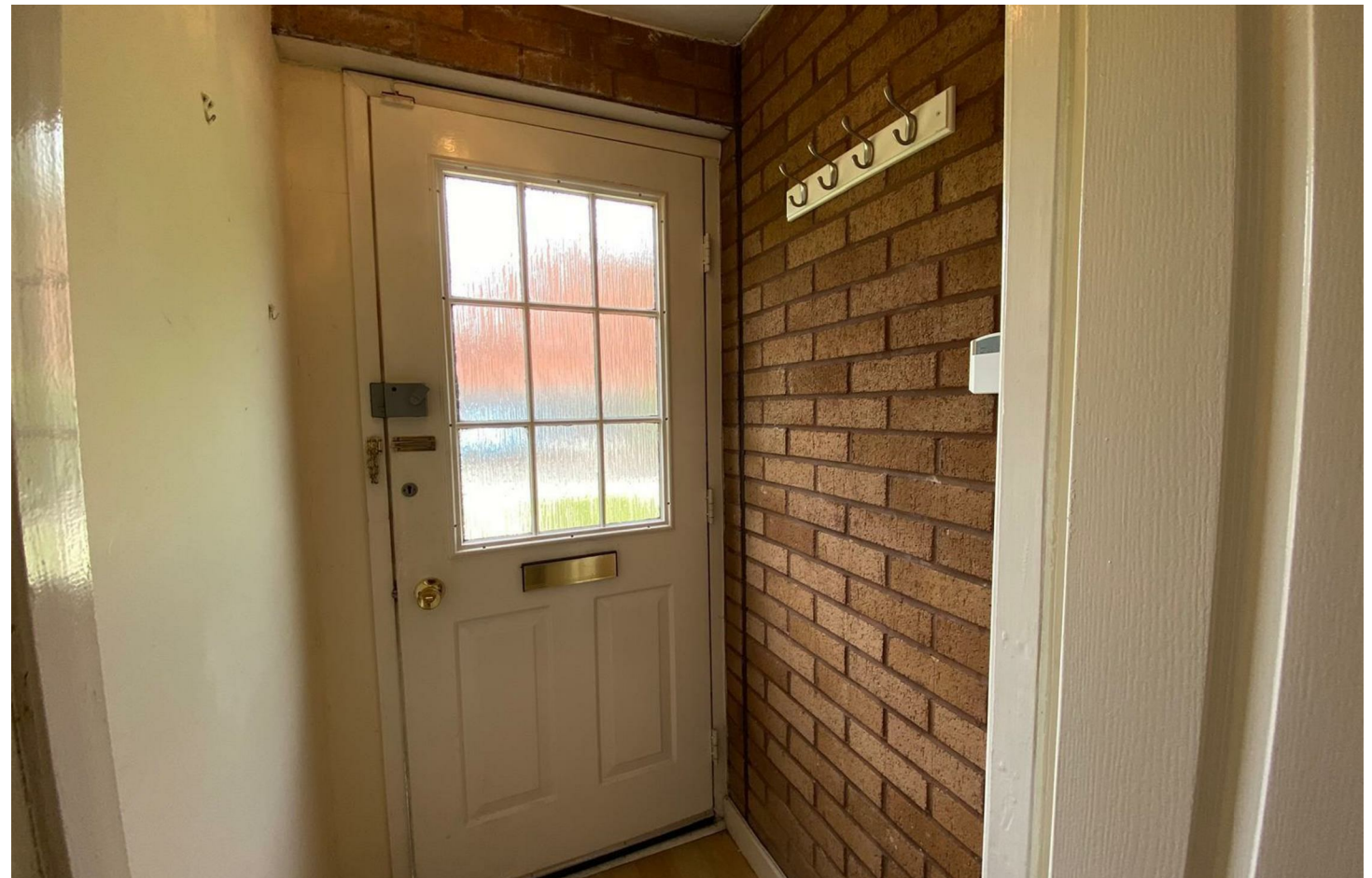
Postcode - M21 9LY

EPC Rating - E

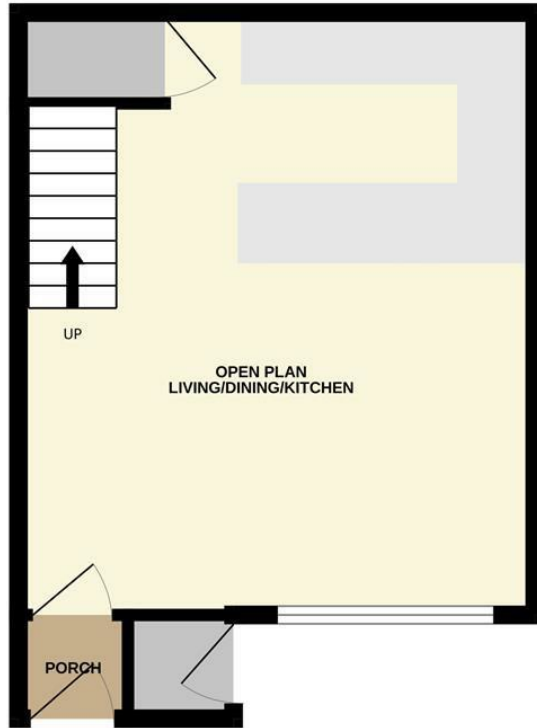
Floor Area - sq ft

Local Authority - Manchester City Council

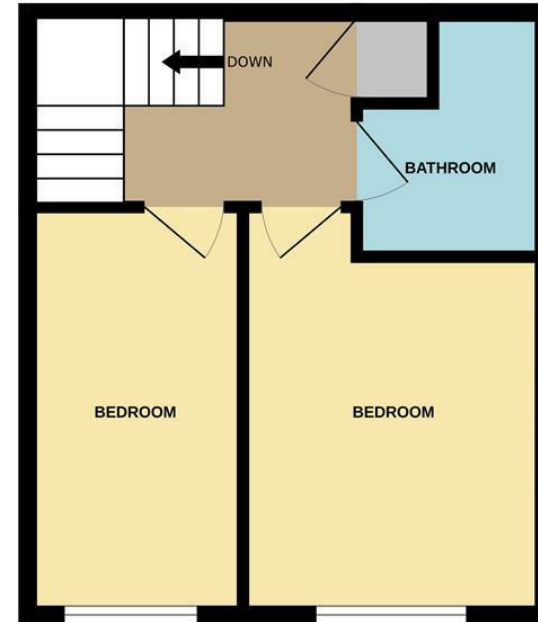
Council Tax - B



GROUND FLOOR



1ST FLOOR



Whilst every attempt has been made to ensure the accuracy of the floorplan contained here, measurements of doors, windows, rooms and any other items are approximate and no responsibility is taken for any error, omission or mis-statement. This plan is for illustrative purposes only and should be used as such by any prospective purchaser. The services, systems and appliances shown have not been tested and no guarantee as to their operability or efficiency can be given.
Made with Metropix ©2024



These particulars are believed to be accurate but they are not guaranteed and do not form a contract. Neither Jordan Fishwick nor the vendor or lessor accept any responsibility in respect of these particulars, which are not intended to be statements or representations of fact and any intending purchaser or lessee must satisfy himself by inspection or otherwise as to the correctness of each of the statements contained in these particulars. Any floorplans on this brochure are for illustrative purposes only and are not necessarily to scale.

Offices at: Offices at Chorlton, Didsbury, Disley, Hale, Glossop, Macclesfield, Manchester Deansgate, Manchester Whitworth Street, New Mills, Sale, Wilmslow and Withington

410-412 Barlow Moor Road, Chorlton, Manchester, M21 8AD

www.jordanfishwick.co.uk