



Jordan fishwick

Flat 3, 18 Hartington Road, Chorlton, Manchester, M21 8UY

Guide Price £195,000



These particulars are believed to be accurate but they are not guaranteed and do not form a contract. Neither Jordan Fishwick nor the vendor or lessor accept any responsibility in respect of these particulars, which are not intended to be statements or representations of fact and any intending purchaser or lessee must satisfy himself by inspection or otherwise as to the correctness of each of the statements contained in these particulars. Any floorplans on this brochure are for illustrative purposes only and are not necessarily to scale.

Offices also at: Wilmslow, Macclesfield, Hale, Sale, Chorlton, Glossop, Manchester & Salford

410-412 Barlow Moor Road, Chorlton, Manchester

01618604444

chorlton@jordanfishwick.co.uk

www.jordanfishwick.co.uk

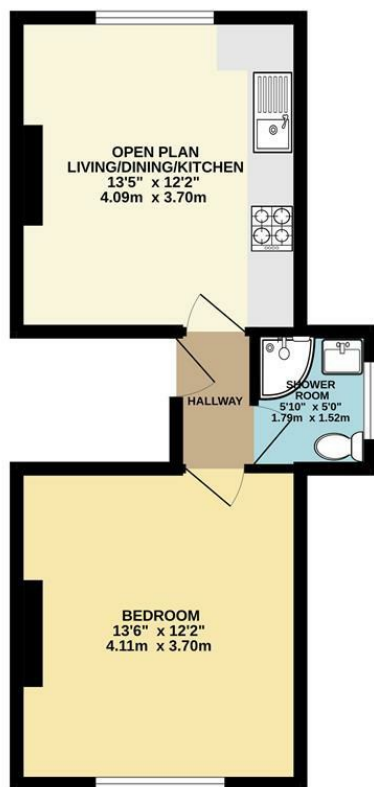
Flat 3, 18 Hartington Road, Chorlton, Manchester, M21 8UY

Situated on a highly regarded road ideally placed for all local amenities in Chorlton Village and Beech Road is this superbly presented ONE DOUBLE BEDROOM TOP FLOOR APARTMENT providing spacious and light accommodation, ideal for a young couple or first time buyer. This splendid property is offered for sale in MOVE-IN READY condition having been tastefully updated and decorated throughout by the current owners and is located only a short walk from all local amenities in Chorlton Village, the vibrant scene of Beech Road and 0.3 miles to the Metro (Chorlton). The accommodation briefly comprises: communal entrance hallway with stairs to the second floor landing, entrance hallway, open plan living/dining/kitchen with Westerly facing window overlooking the well maintained communal gardens, one spacious double bedroom and shower room, fitted with a modern three piece suite. Both double glazing and gas central heating have been installed throughout. Externally there are well maintained communal gardens which enjoy a Westerly aspect, available for use by all residents, which have been mainly laid to lawn with mature trees and shrubbery. An internal viewing of this fine property is highly recommended. Council Tax Band A. Epc Band C.



Guide Price £195,000

SECOND FLOOR
375 sq.ft. (34.8 sq.m.) approx.



TOTAL FLOOR AREA : 375 sq.ft. (34.8 sq.m.) approx.
Whilst every attempt has been made to ensure the accuracy of the floorplan contained here, measurements of doors, windows, rooms and any other items are approximate and no responsibility is taken for any error, omission or mis-statement. This plan is for illustrative purposes only and should be used as such by any prospective purchaser. The services, systems and appliances shown have not been tested and no guarantee as to their operability or efficiency can be given.
Made with Metropix ©2024



Energy Efficiency Rating		Current	Potential
Very energy efficient - lower running costs			
(92 plus) A			
(81-91) B		78	78
(69-80) C			
(55-68) D			
(39-54) E			
(21-38) F			
(1-20) G			
Not energy efficient - higher running costs			
England & Wales		EU Directive 2002/91/EC	

These particulars are believed to be correct but they are not guaranteed and do not form a contract. Neither Jordon Fishwick nor the vendor or lessor accept any responsibility in respect of these particulars, which are intended to be statements or representation of fact and any intending purchaser or lessee must satisfy himself by inspection or otherwise as to the correctness of each of the statements contained in these particulars. Any floorplans on this brochure are for illustration purposes only and are not necessarily to scale.

