



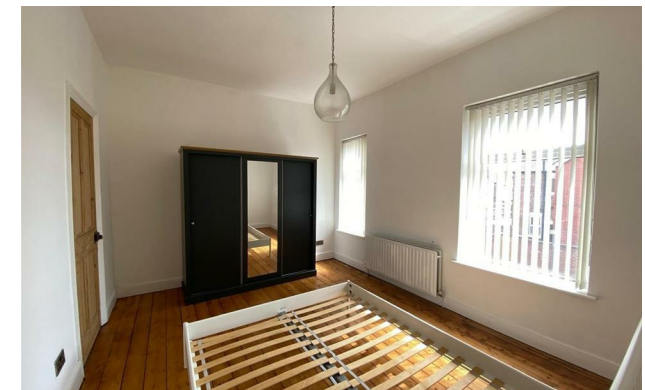
jordanfishwick

Taylor's Road
Stretford



Taylors Road Stretford M32 0JP

£1,195 Per Calendar Month



The Property

**** AVAILABLE NOW **** This well presented 2 Bedroom terraced property has been stylishly finished throughout with original wooden flooring to the first floor. Th property offers light and spacious accommodation throughout suited for a small family, couple or two professionals. The property offers: porch, entrance hall, large lounge and dining room, modern fitted kitchen with all appliances. To the first floor there are two double bedrooms and a large family sized bathroom with a white three-piece suite and separate shower cubicle. There is a courtyard garden to the rear. Well located for the amenities and Transport links. The property is offered unfurnished.

***** To arrange a viewing please call Call 0161 393 7539 *****

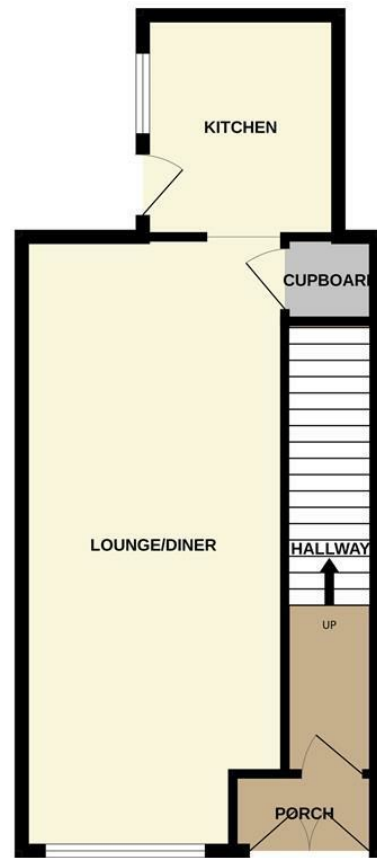
Directions

- Council Tax Band D - EPC D
- Well presented 2 Bedroom Terrace
- large Lounge/Dining Room
- Close to all amenities & Transport links
- Unfurnished
- Private Garden
- Available Now

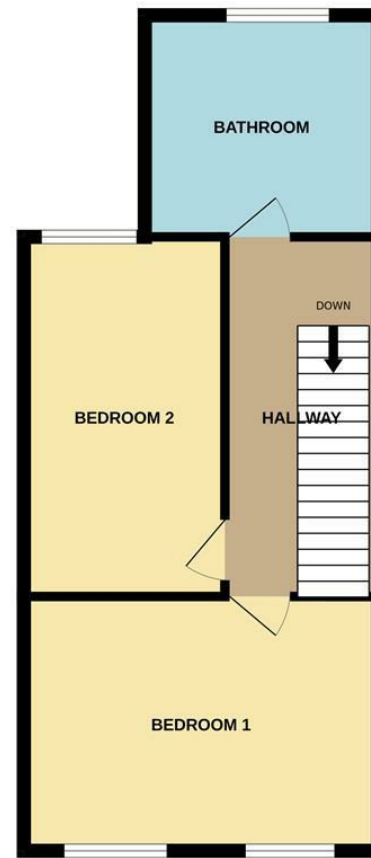
Postcode - M32 0JP
EPC Rating - D
Floor Area - sq ft
Local Authority - Trafford
Council Tax - D



GROUND FLOOR
445 sq.ft. (41.3 sq.m.) approx.



1ST FLOOR
459 sq.ft. (42.7 sq.m.) approx.



TOTAL FLOOR AREA : 904 sq.ft. (84.0 sq.m.) approx.

Whilst every attempt has been made to ensure the accuracy of the floorplan contained here, measurements of doors, windows, rooms and any other items are approximate and no responsibility is taken for any error, omission or mis-statement. This plan is for illustrative purposes only and should be used as such by any prospective purchaser. The services, systems and appliances shown have not been tested and no guarantee as to their operability or efficiency can be given.
Made with Metropix ©2024



These particulars are believed to be accurate but they are not guaranteed and do not form a contract. Neither Jordan Fishwick nor the vendor or lessor accept any responsibility in respect of these particulars, which are not intended to be statements or representations of fact and any intending purchaser or lessee must satisfy himself by inspection or otherwise as to the correctness of each of the statements contained in these particulars. Any floorplans on this brochure are for illustrative purposes only and are not necessarily to scale.

Offices at: Offices at Chorlton, Didsbury, Disley, Hale, Glossop, Macclesfield, Manchester Deansgate, Manchester Whitworth Street, New Mills, Sale, Wilmslow and Withington

410-412 Barlow Moor Road, Chorlton, Manchester, M21 8AD

www.jordanfishwick.co.uk