



Jordan fishwick

Edge Lane
Chorlton



Edge Lane Chorlton M21 9JY

£1,450 Per Calendar Month



The Property

*** AVAILABLE NOW *** We are super excited to offer this recently renovated two bedroom mews house to the market. The property is excellently located on Edge Lane in Chorlton, close to local transport links and within walking distance to Chorlton Green & Chorlton town centre. The accommodation offers; Large open plan lounge, new fitted kitchen with new integrated appliances, large double bedroom, second bedroom/study, bathroom with shower over bath. To the front of the property there is a lawned garden bordered with established trees and space for one car. To the rear of the property there is a Large landscaped garden. Unfurnished.

***** To arrange a viewing please call 0161 393 75 39 *****

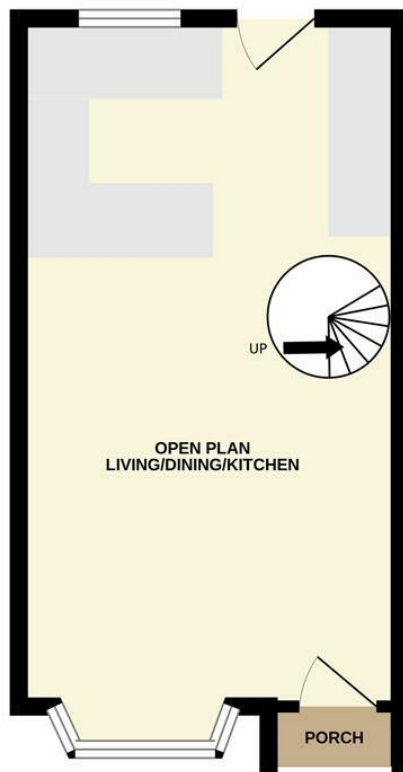
Directions

- Council Tax C - EPC D
- 2 Bedroom Mews
- Off Road Parking
- New Fitted kitchen & Appliances
- Newly decorated and carpeted.
- Close to Chorlton Green
- Available Now

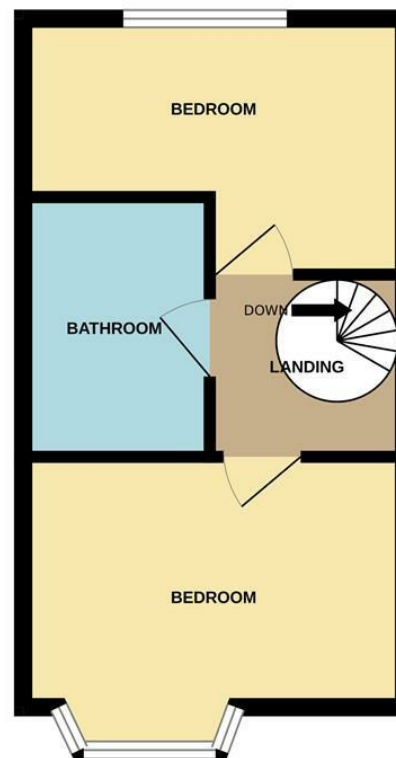
Postcode - M21 9JY
EPC Rating - D
Floor Area - sq ft
Local Authority - Manchester
Council Tax - C



GROUND FLOOR
289 sq.ft. (26.9 sq.m.) approx.



1ST FLOOR
281 sq.ft. (26.1 sq.m.) approx.



TOTAL FLOOR AREA: 570 sq.ft. (53.0 sq.m.) approx.

Whilst every attempt has been made to ensure the accuracy of the floorplan contained here, measurements of doors, windows, rooms and any other items are approximate and no responsibility is taken for any error, omission or mis-statement. This plan is for illustrative purposes only and should be used as such by any prospective purchaser. The services, systems and appliances shown have not been tested and no guarantee as to their operability or efficiency can be given.
Made with Metropix ©2024



These particulars are believed to be accurate but they are not guaranteed and do not form a contract. Neither Jordan Fishwick nor the vendor or lessor accept any responsibility in respect of these particulars, which are not intended to be statements or representations of fact and any intending purchaser or lessee must satisfy himself by inspection or otherwise as to the correctness of each of the statements contained in these particulars. Any floorplans on this brochure are for illustrative purposes only and are not necessarily to scale.

Offices at: Offices at Chorlton, Didsbury, Disley, Hale, Glossop, Macclesfield, Manchester Deansgate, Manchester Whitworth Street, New Mills, Sale, Wilmslow and Withington

410-412 Barlow Moor Road, Chorlton, Manchester, M21
8AD

www.jordanfishwick.co.uk