



*jordanfishwick*

Edge Lane  
Chorlton



## Edge Lane Chorlton M21 9JF

£1,450 Per Calendar Month



### The Property

\*\*\*\* AVAILABLE NOW \*\*\*\* A superb 2 double bedroom apartment situated in a stunning period property. This beautifully presented apartment is one of only ten in this completely renovated and refurbished Victorian property and is finished to the highest of standards throughout. The property provides both an allocated parking spot as well as a private garden pod. Just a short walk to Chorlton Village, the metro and Beech road, this development is ideally placed for all local amenities. The spacious accommodation briefly comprises: communal entrance hallway, hallway, large and light open plan lounge/dining room/kitchen with integrated appliances, two good sized bedrooms, stunning bathroom with modern three piece suite and shower over bath.

The property is furnished and decorated to a high standard throughout. Early viewing of this wonderful apartment comes highly recommended. Not offered to Sharers.

\*\*\*\*\* To arrange a viewing please call Tel, 0161 393 7539 \*\*\*\*\*

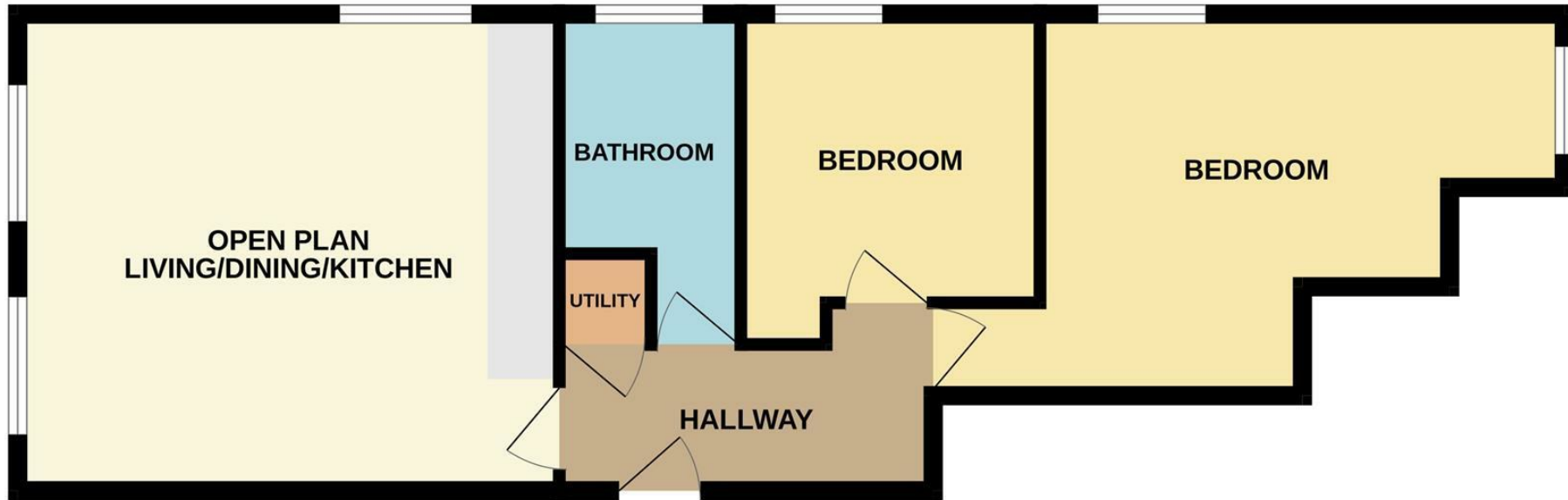
### Directions

- Council Tax B- EPC B
- Stunning 2 Bedroom Apartment
- Fully Furnished
- Allocated Parking
- Garden Pod
- Beech Road Location
- Available Now

Postcode - M21 9JF  
EPC Rating - B  
Floor Area - sq ft  
Local Authority - Manchester  
Council Tax - B



GROUND FLOOR  
600 sq.ft. (55.7 sq.m.) approx.



TOTAL FLOOR AREA : 600 sq.ft. (55.7 sq.m.) approx.  
Measurements are approximate. Not to scale. Illustrative purposes only  
Made with Metropix ©2024



These particulars are believed to be accurate but they are not guaranteed and do not form a contract. Neither Jordan Fishwick nor the vendor or lessor accept any responsibility in respect of these particulars, which are not intended to be statements or representations of fact and any intending purchaser or lessee must satisfy himself by inspection or otherwise as to the correctness of each of the statements contained in these particulars. Any floorplans on this brochure are for illustrative purposes only and are not necessarily to scale.

Offices at: Offices at Chorlton, Didsbury, Disley, Hale, Glossop, Macclesfield, Manchester Deansgate, Manchester Whitworth Street, New Mills, Sale, Wilmslow and Withington

410-412 Barlow Moor Road, Chorlton, Manchester, M21  
8AD

[www.jordanfishwick.co.uk](http://www.jordanfishwick.co.uk)