



jordanfishwick

Christie Road
Stretford



Christie Road Stretford M32 0GY

£1,750 Per Calendar Month



The Property

*** AVAILABLE AUGUST *** NEW DEVELOPMENT***Situating in a new development positioned conveniently close to Chester Road within a tree-lined neighbourhood. This truly splendid and immaculately presented Three bedroom Townhouse offers spacious and light family accommodation over three floors. This wonderful property boasts a large open plan lounge and kitchen area leading out onto an enclosed garden which further leads to a secure large communal garden with picnic areas and well maintained raised borders. The spacious and versatile accommodation briefly comprises: entrance hall, cloakroom/wc/utility, access to the garage. To the first floor there is a spacious lounge/kitchen with quality brand new integrated appliances. To the second floor there is the main bedroom with an en suite shower room, two additional bedrooms and a bathroom. Gas central heating, double glazing a driveway for one car and a garage with room to house a further two cars. Viewing of this superb home is highly recommended. Offered on an unfurnished basis. *****PETS WELCOME*****
 ***** To arrange a viewing call 0161 393 7539 *****

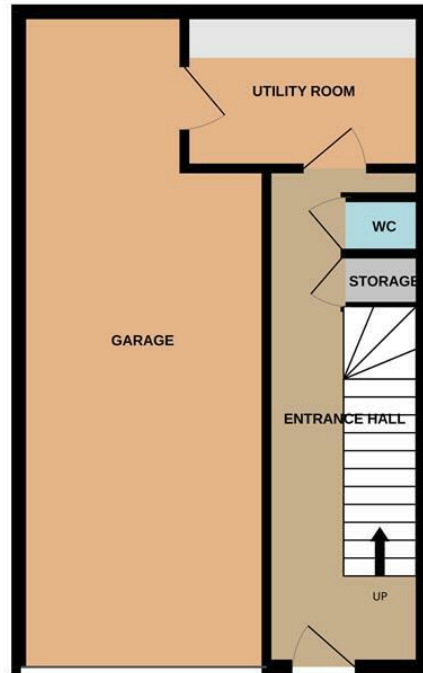
Directions

- Council Tax Band D - EPC Grade B
- 3 Bedroom & 3 Bathroom
- Off road parking with Garage
- New Development
- Close to all Transport links
- Private Garden and communal roof garden Terrace
- Available August

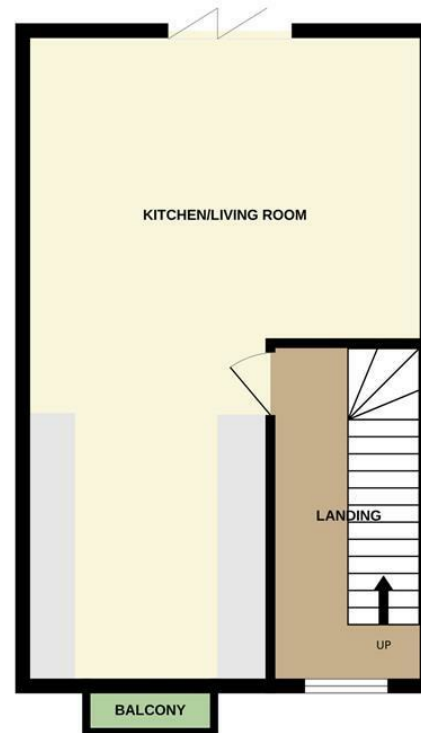
Postcode - M32 0GY
EPC Rating - B
Floor Area - sq ft
Local Authority - Trafford
Council Tax - D



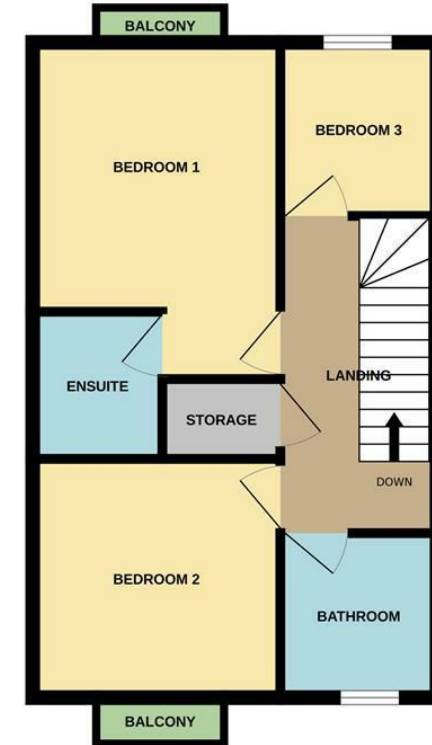
GROUND FLOOR
422 sq.ft. (39.2 sq.m.) approx.



1ST FLOOR
422 sq.ft. (39.2 sq.m.) approx.



2ND FLOOR
422 sq.ft. (39.2 sq.m.) approx.



TOTAL FLOOR AREA : 1265 sq.ft. (117.5 sq.m.) approx.

Whilst every attempt has been made to ensure the accuracy of the floorplan contained here, measurements of doors, windows, rooms and any other items are approximate and no responsibility is taken for any error, omission or mis-statement. This plan is for illustrative purposes only and should be used as such by any prospective purchaser. The services, systems and appliances shown have not been tested and no guarantee as to their operability or efficiency can be given.
Made with Metropix ©2024



These particulars are believed to be accurate but they are not guaranteed and do not form a contract. Neither Jordan Fishwick nor the vendor or lessor accept any responsibility in respect of these particulars, which are not intended to be statements or representations of fact and any intending purchaser or lessee must satisfy himself by inspection or otherwise as to the correctness of each of the statements contained in these particulars. Any floorplans on this brochure are for illustrative purposes only and are not necessarily to scale.

Offices at: Offices at Chorlton, Didsbury, Disley, Hale, Glossop, Macclesfield, Manchester Deansgate, Manchester Whitworth Street, New Mills, Sale, Wilmslow and Withington

410-412 Barlow Moor Road, Chorlton, Manchester, M21
8AD

www.jordanfishwick.co.uk