



TO LET
jordan fishwick
lettings
CHORLTON
0161-860 4444
www.jordanfishwick.co.uk

jordan fishwick

Bentley Road
Chorlton



Bentley Road Chorlton M21 9WD

£2,850 Per Calendar Month



The Property

**** AVAILABLE NOW **** We are very excited to offer this fully renovated semi detached property to the Market. The attention to detail throughout is immaculate with a beautiful bottle green Shaker style kitchen with Integrated appliances and large Island for dining. Having been tastefully refurbished throughout to the highest of standards this delightful property will prove an ideal family home boasting a large open plan dining/kitchen/lounge area as well as a three Bathroom & five Bedrooms. The accommodation briefly comprises: covered porch, entrance hallway, lounge, WC, open plan dining/kitchen/lounge, utility room. To the first floor there are five double bedrooms, all of excellent proportions, shower room and the main family bathroom, fitted with a modern suites & tiling. The open plan living/dining/kitchen with bi-folding doors opening to the private rear terrace. The rear and side aspect externally are laid to lawn with established shrubs and trees, to the front of the property there is block paved patio area and established hedge boundary. Double glazing and gas central heating have been installed throughout and an internal viewing is most highly recommended. This fine property is not one to be missed.
***** To arrange a viewing please call 0161 393 7539 *****

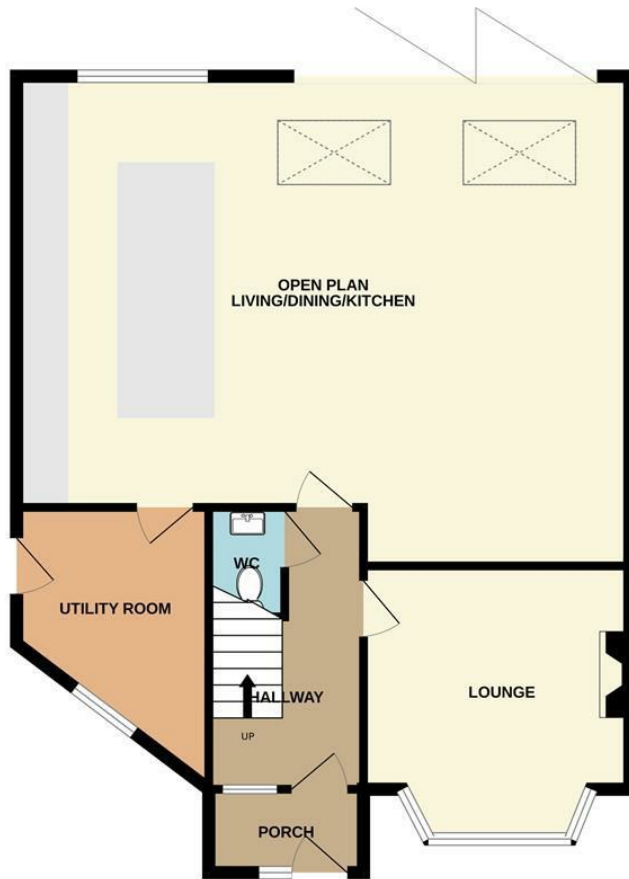
Directions

- Council Tax Band C - EPC Grade C
- Fully Renovated property
- 5 Bedrooms & 2 Bathrooms
- Landscaped Gardens
- Unfurnished
- Bespoke Kitchen with Island
- Available Now

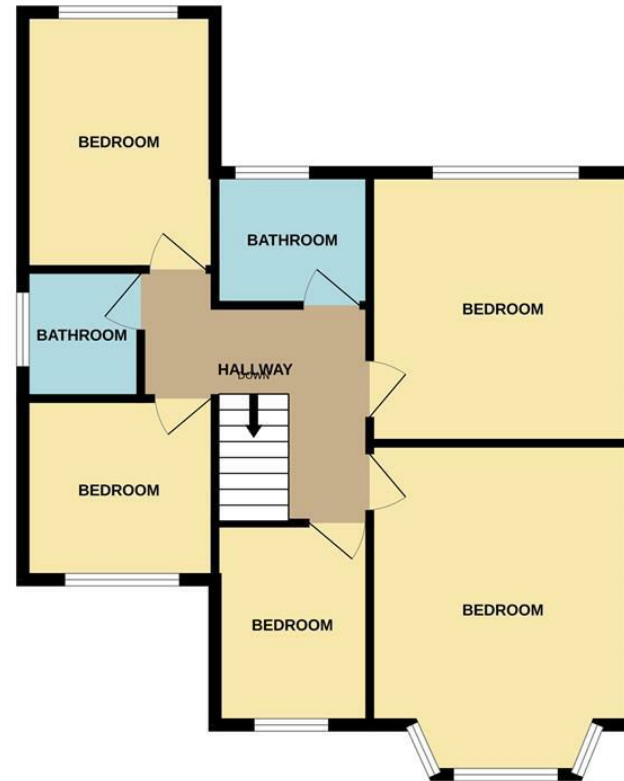
Postcode - M21 9WD
EPC Rating - C
Floor Area - sq ft
Local Authority - Manchester
Council Tax - C



GROUND FLOOR



1ST FLOOR



Whilst every attempt has been made to ensure the accuracy of the floorplan contained here, measurements of doors, windows, rooms and any other items are approximate and no responsibility is taken for any error, omission or mis-statement. This plan is for illustrative purposes only and should be used as such by any prospective purchaser. The services, systems and appliances shown have not been tested and no guarantee as to their operability or efficiency can be given.
Made with Metropix ©2024

These particulars are believed to be accurate but they are not guaranteed and do not form a contract. Neither Jordan Fishwick nor the vendor or lessor accept any responsibility in respect of these particulars, which are not intended to be statements or representations of fact and any intending purchaser or lessee must satisfy himself by inspection or otherwise as to the correctness of each of the statements contained in these particulars. Any floorplans on this brochure are for illustrative purposes only and are not necessarily to scale.

Offices at: Offices at Chorlton, Didsbury, Disley, Hale, Glossop, Macclesfield, Manchester Deansgate, Manchester Whitworth Street, New Mills, Sale, Wilmslow and Withington

410-412 Barlow Moor Road, Chorlton, Manchester, M21
8AD

www.jordanfishwick.co.uk

