



Jordan fishwick

167 & 167a Shrewsbury Street, Old Trafford, M16 7WU

Guide Price £475,000

167 & 167a Shrewsbury Street, Old Trafford, Manchester, M16 7WU

Guide Price £475,000



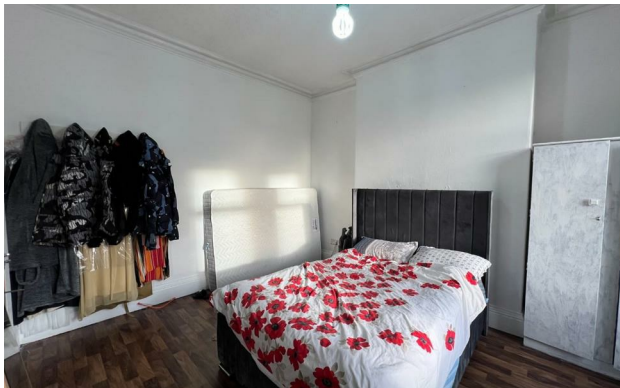
The Property

*****NO CHAIN***** A SIX DOUBLE BEDROOM SEMI DETACHED PERIOD PROPERTY providing spacious and versatile accommodation over three floors plus a SELF CONTAINED TWO BEDROOM APARTMENT in the converted cellars. this delightful property is suitable for use as a family home or House of Multiple Occupation and is offered for sale with no vendor chain. The accommodation briefly comprises: entrance hallway, SEVENTEEN FOOT LOUNGE, sitting room, OPEN PLAN DINING KITCHEN. To the first floor are three well proportioned double bedrooms, bathroom and second shower room. To the second floor are three further double bedrooms and additional bathroom. Double glazing and gas central heating have been installed throughout. Externally there are walled gardens to both the front and rear of the property. The cellars have been converted to a self contained two bedroom apartment of which the accommodation comprises: open plan living/dining/kitchen, two good sized double bedrooms and bathroom fitted with a three piece suite and over bath shower. An internal viewing is strongly recommended. SOLD WITH TENANTS IN SITU. Council Tax Band B. EPC D

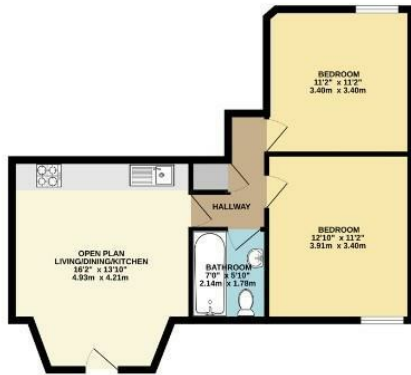
- NO CHAIN
- Six double bedroom semi detached period property
- Self contained two bedroom self contained apartment
- Ideal family home
- Stone's throw from all local amenities
- Well placed for city centre transport links
- Double glazing and gas central heating throughout
- Walking distance to Merlins Park and Alexandra Park
- Sold with tenants in situ



Energy Efficiency Rating		
	Current	Potential
Very energy efficient - lower running costs		
(92 plus) A		
(81-91) B		81
(69-80) C		
(55-68) D	59	
(39-54) E		
(21-38) F		
(1-20) G		
Not energy efficient - higher running costs		
England & Wales	EU Directive 2002/91/EC	



SELF CONTAINED LOWER
GROUND FLOOR APARTMENT
557 sq.ft. (51.8 sq.m.) approx.



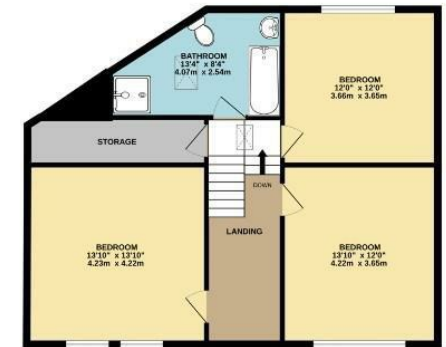
GROUND FLOOR
756 sq.ft. (70.2 sq.m.) approx.



1ST FLOOR
755 sq.ft. (70.2 sq.m.) approx.



2ND FLOOR
747 sq.ft. (69.4 sq.m.) approx.



TOTAL FLOOR AREA : 2815 sq.ft. (261.6 sq.m.) approx.

Whilst every attempt has been made to ensure the accuracy of the floorplan contained here, measurements of doors, windows, rooms and any other items are approximate and no responsibility is taken for any error, omission or mis-statement. This plan is for illustrative purposes only and should be used as such by any prospective purchaser. The services, systems and appliances shown have not been tested and no guarantee as to their operability or efficiency can be given.

Made with Metropix ©2023



These particulars are believed to be accurate but they are not guaranteed and do not form a contract. Neither Jordan Fishwick nor the vendor or lessor accept any responsibility in respect of these particulars, which are not intended to be statements or representations of fact and any intending purchaser or lessee must satisfy himself by inspection or otherwise as to the correctness of each of the statements contained in these particulars. Any floorplans on this brochure are for illustrative purposes only and are not necessarily to scale.

Offices at: Chorlton, Didsbury, Disley, Hale, Glossop, Macclesfield, Manchester Deansgate, Manchester Whitworth Street, New Mills, Sale, Wilmslow and Withington