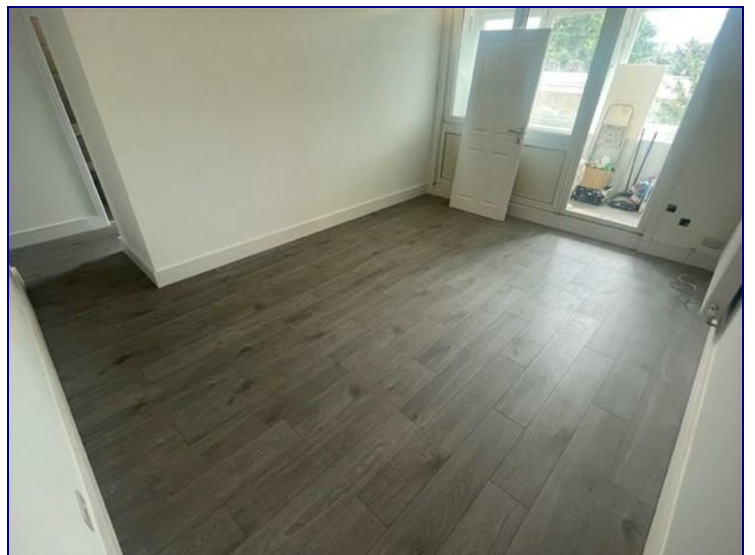


Rothbury Walk, London, N17 0PW



£1,400

Kings Group are delighted to offer this 1 bedroom first floor flat on Rothbury Walk. This unfurnished property has been recently refurbished to a high standard throughout and boasts a modern kitchen with appliances, spacious living room, 3 piece bathroom, double bedroom and a small balcony with access from both the bedroom and living room. Located just a 10 minute walk to Tottenham Hotspur Stadium on the High Road, benefitting from great transport links (White Hart Lane & Northumberland Park station) and many local shops/amenities. Contact our Tottenham office now to book in a viewing!



Energy Efficiency Rating		
	Current	Potential
<i>Very energy efficient - lower running costs</i>		
(92 plus) A		
(81-91) B		
(69-80) C		
(55-68) D		
(39-54) E		
(21-38) F		
(1-20) G		
<i>Not energy efficient - higher running costs</i>		
England & Wales	EU Directive 2002/91/EC	

Environmental Impact (CO ₂) Rating		
	Current	Potential
<i>Very environmentally friendly - lower CO2 emissions</i>		
(92 plus) A		
(81-91) B		
(69-80) C		
(55-68) D		
(39-54) E		
(21-38) F		
(1-20) G		
<i>Not environmentally friendly - higher CO2 emissions</i>		
England & Wales	EU Directive 2002/91/EC	

