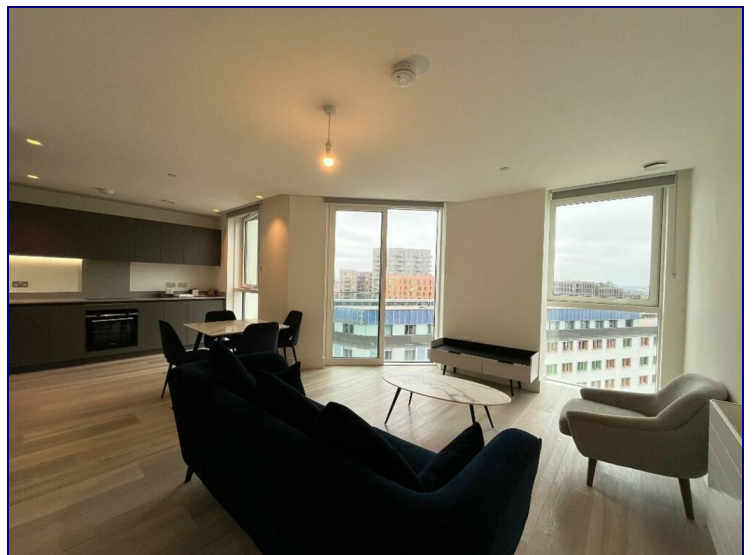
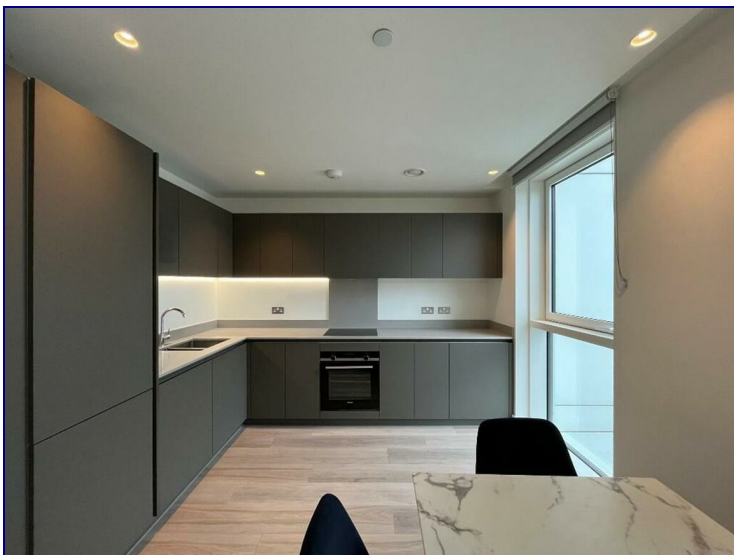


**Daneland Walk, London, N17 9GZ**



**£2,700**

Kings Group are delighted to offer this furnished 2 bedroom flat in Hale Works. The flat benefits from a modern open plan kitchen/living area, 2 double bedrooms, 2 bathrooms and amazing views from both the property and the residents private sky garden! The nearest railway stations are Tottenham Hale and Seven Sisters with the Victoria Line and National Rail providing great connections to central London and surrounding areas. Contact our Tottenham office now to book in a viewing.



Energy Efficiency Rating		
	Current	Potential
<i>Very energy efficient - lower running costs</i>		
(92 plus) <b>A</b>		
(81-91) <b>B</b>		
(69-80) <b>C</b>		
(55-68) <b>D</b>		
(39-54) <b>E</b>		
(21-38) <b>F</b>		
(1-20) <b>G</b>		
<i>Not energy efficient - higher running costs</i>		
<b>England &amp; Wales</b>	EU Directive 2002/91/EC	

Environmental Impact (CO <sub>2</sub> ) Rating		
	Current	Potential
<i>Very environmentally friendly - lower CO2 emissions</i>		
(92 plus) <b>A</b>		
(81-91) <b>B</b>		
(69-80) <b>C</b>		
(55-68) <b>D</b>		
(39-54) <b>E</b>		
(21-38) <b>F</b>		
(1-20) <b>G</b>		
<i>Not environmentally friendly - higher CO2 emissions</i>		
<b>England &amp; Wales</b>	EU Directive 2002/91/EC	

