



Fyfield

Burbidge Close, Lytchett Matravers, Poole, BH16 6EG



EST. 1977

KEY DRUMMOND

ESTATE AGENTS



Fyfield

Burbidge Close, Lytchett Matravers, Poole, BH16 6EG

**** VIEW OUR VIDEO TOUR - FANTASTIC FAMILY HOME **** A splendid detached family residence in a prime Lytchett Matravers location. This exceptional home presents luminous and spacious living spaces, comprising an entrance hallway, contemporary kitchen, generous living room, dining room, and a convenient downstairs shower room. Upstairs, you will find four well-proportioned bedrooms, picturesque countryside views visible from the first and second bedrooms, and a delightful family bathroom. The exterior boasts an expansive wrap-around garden with sufficient room for a camper van or caravan, ample off-road parking, a substantial garage, and a workshop. Additional advantages encompass central heating, double glazing, and the peacefulness of a secluded cul-de-sac setting. Viewing is highly recommended.



Local Authority , Tax Band D, Tenure: Freehold



Entrance Hallway:

Kitchen: 4.75 x 3.47 (15'7" x 11'4")

Lounge: 6.29 x 4.13 (20'7" x 13'6")

Dining Room: 4.75 x 2.62 (15'7" x 8'7")

Shower Room:

Master Bedroom: 4.75 x 3.56 (15'7" x 11'8")

Bedroom Two: 4.90 x 3.14 (16'0" x 10'3")

Bedroom Three: 4.13 x 3.56 (13'6" x 11'8")

Bedroom Four: 4.75 x 2.55 (15'7" x 8'4")

Bathroom:

Off Road Parking:

Garage: 5.95 x 3.11 (19'6" x 10'2")

Outbuilding/Workshop: 5.95 x 1.53 (19'6" x 5'0")

Rear Garden:







Tenure

Tenure: Freehold

Postcode: BH16 6EG

EPC: D

Council Tax: D

School Catchment Area: Please contact BCP for current admission information

Key Drummond Properties:

To see our properties before they go on the market please like us on Facebook (Key Drummond Estate Agents), Instagram (keydrummodoakdale), and YouTube (Key Drummond - Oakdale).

Copyright:

All photos, video, and drone footage are copyrighted by Worldwide Property Sales TA Key Drummond Estate Agents. All rights reserved.

Any redistribution or reproduction of part or all of the contents in any form is prohibited other than the following:

1. You may print or download to local hard disk extracts for your personal and non-commercial use only
2. You may copy the content to individual third parties for their personal use, but only if you acknowledge Key Drummond as the source of the material

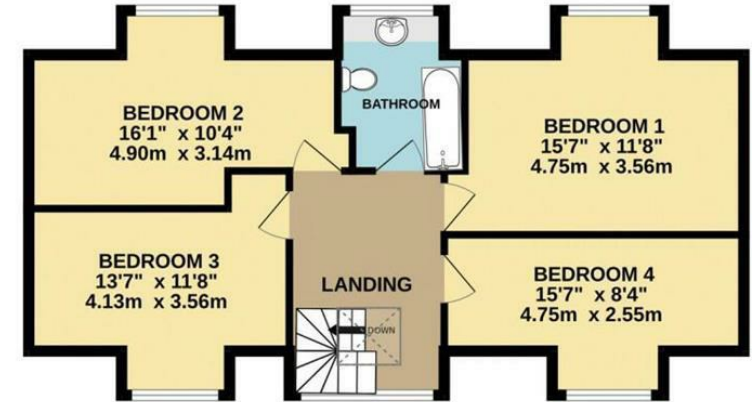
You may not, except with our express written permission, distribute or commercially exploit the content. Nor may you transmit it or store it on any other website or another form of the electronic retrieval system.



GROUND FLOOR
1148 sq.ft. (106.7 sq.m.) approx.



1ST FLOOR
657 sq.ft. (61.1 sq.m.) approx.



4 BED DETACHED

TOTAL FLOOR AREA : 1806 sq.ft. (167.8 sq.m.) approx.

Whilst every attempt has been made to ensure the accuracy of the floorplan contained here, measurements of doors, windows, rooms and any other items are approximate and no responsibility is taken for any error, omission or mis-statement. This plan is for illustrative purposes only and should be used as such by any prospective purchaser. The services, systems and appliances shown have not been tested and no guarantee as to their operability or efficiency can be given.

Made with Metropix ©2023

These particulars, whilst believed to be accurate are set out as a general outline only for guidance and do not constitute any part of an offer or contract. Intending purchasers should not rely on them as statements of representation of fact, but must satisfy themselves by inspection or otherwise as to their accuracy. No person in this firm's employment has the authority to make or give any representation or warranty in respect of the property.

Energy Efficiency Rating		Current	Potential
Very energy efficient - lower running costs			
(92 plus)	A		
(81-91)	B		82
(69-80)	C	66	
(55-68)	D		
(39-54)	E		
(21-38)	F		
(1-20)	G		
Not energy efficient - higher running costs			
England & Wales		EU Directive 2002/91/EC	



01202 681113

oakdale@keydrummond.com

14 Dorchester Road, Oakdale, Poole, Dorset, BH15 3JY