



£3,500 Per Calendar Month

1 Gardens Crescent, Lilliput, Poole, Dorset, BH14 8JE


EST. 1977
KEY DRUMMOND
ESTATE AGENTS



1

Gardens Crescent, Lilliput, Poole, Dorset, BH14 8JE

NEW CARPETS & DECORATION A charming and well appointed detached residence located on a corner of a quiet cul-de-sac in Gardens Crescent Lilliput, within striking distance of the shores Poole Harbour.

- Spectacular Family Home
- Access to Private Slipway for Residents
- Double Garage & Driveway
- Five Bedrooms, Four Bathrooms
- Harbour Views
- Fantastic Location

Local Authority BCP, Tax Band G, Tenure:



Property Comprises

A spectacular family home with views over Poole Harbour from the top floor, the property also benefits from having access to a private slipway for the exclusive use of resident's.

Boasting 3 reception rooms, including an open plan kitchen diner family room, an additional living room, and an office.

With 5 bedrooms and 4 bathrooms, including three bedrooms with balconies overlooking the beautiful garden and two with ensembles.

The property also features a double garage, driveway parking, utility room, and a store room, providing plenty of storage space and convenience.

Step outside to discover the private rear garden, complete with decking, lawn, and a tranquil pond, creating a serene outdoor space.

Available 15th December on an unfurnished basis.

EPC Rating - D

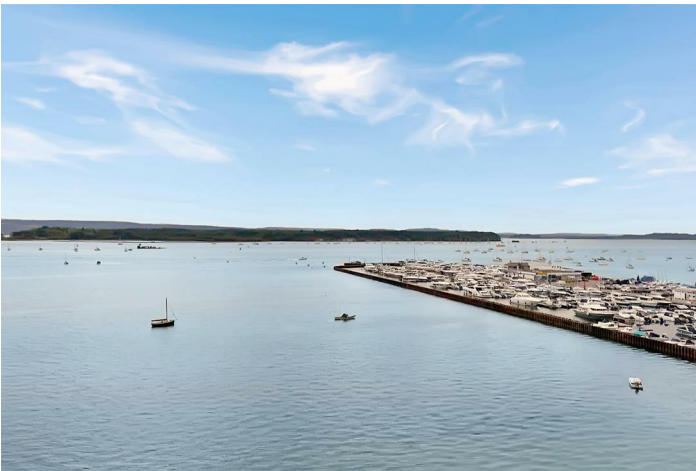
Council Tax Band - G

Key Drummond Properties

To see our properties before they go on the market please like us on Facebook (Key Drummond Letting Agents) & Instagram (keydrummondlettings).

Copyright







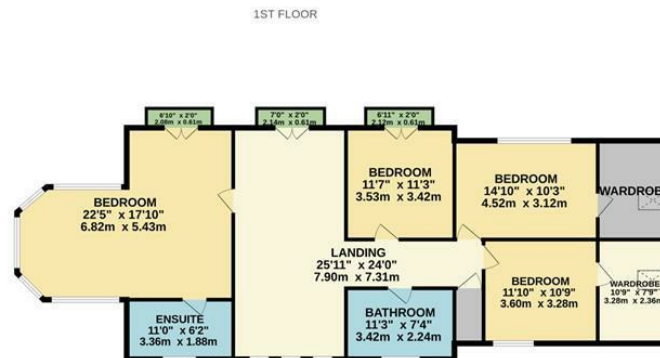
All photos, video, and drone footage are copyrighted by Worldwide Property Sales TA Key Drummond Estate Agents. All rights reserved.

Any redistribution or reproduction of part or all of the contents in any form is prohibited other than the following:

1. You may print or download to local hard disk extracts for your personal and non-commercial use only
2. You may copy the content to individual third parties for their personal use, but only if you acknowledge Key Drummond as the source of the material

You may not, except with our express written permission, distribute or commercially exploit the content. Nor may you transmit it or store it on any other website or another form of the electronic retrieval system.





Whilst every attempt has been made to ensure the accuracy of the floorplan contained here, measurements of doors, windows, rooms and any other items are approximate and no responsibility is taken for any error, omission or mis-statement. This plan is for illustrative purposes only and should be used as such by any prospective purchaser. The services, systems and appliances shown have not been tested and no guarantee as to their operability or efficiency can be given.
 Made with Metropix ©2024

These particulars, whilst believed to be accurate are set out as a general outline only for guidance and do not constitute any part of an offer or contract. Intending purchasers should not rely on them as statements of representation of fact, but must satisfy themselves by inspection or otherwise as to their accuracy. No person in this firms employment has the authority to make or give any representation or warranty in respect of the property.

