



£1,700 Per Month

Flat 1 Cappella 57 Haven Road, Canford Cliffs, Poole, BH13 7LH


EST. 1977
KEYDRUMMOND
ESTATE AGENTS



Flat 1 Cappella

57 Haven Road, Canford Cliffs, Poole, BH13 7LH

Beautifully presented, ground floor apartment located in the sought after village of Canford Cliffs, within walking distance of local shops and amenities.

Internally this property benefits from a generously sized, open plan fitted kitchen/dining area with integrated appliances, two double bedrooms, and two modern bathrooms, one of which boasts a built in TV.

The apartment has secure, keyless entry as well as an underground parking space for one car.

EPC Rating - C

- Located in Canford Cliffs Village
- Two Double Bedrooms
- Keyless Entry
- Fully Furnished
- Modern Kitchen With Integrated Appliances
- Underground Parking

Local Authority , Tax Band , Tenure:



Property Requirements

No Pets

No Smokers

You must be able to pass a credit check to rent this property.

Affordability calculated that annual income exceeds 30 x monthly rental (£49,500)

Key Drummond Properties

To see our properties before they go on the market please like us on Facebook (Key Drummond Letting Agents) & Instagram (keydrummondlettings)

Copyright

All photos, video, and drone footage are copyrighted by Worldwide Property Sales TA Key Drummond Estate Agents. All rights reserved.

Any redistribution or reproduction of part or all of the contents in any form is prohibited other than the following:

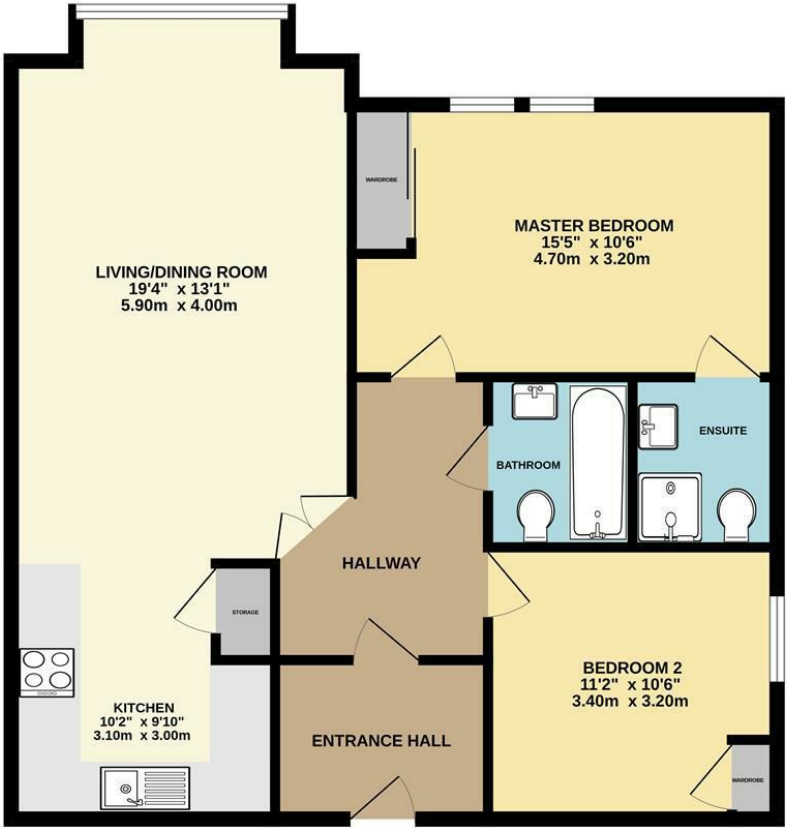
1. You may print or download to local hard disk extracts for your personal and non-commercial use only
2. You may copy the content to individual third parties for their personal use, but only if you acknowledge Key Drummond as the source of the material

You may not, except with our express written permission, distribute or commercially exploit the content. Nor may you transmit it or store it on any other website or another form of the electronic retrieval system.






GROUND FLOOR
849 sq.ft. (78.9 sq.m.) approx.



TOTAL FLOOR AREA : 849 sq.ft. (78.9 sq.m.) approx.

Whilst every attempt has been made to ensure the accuracy of the floorplan contained here, measurements of doors, windows, rooms and any other items are approximate and no responsibility is taken for any error, omission or mis-statement. This plan is for illustrative purposes only and should be used as such by any prospective purchaser. The services, systems and appliances shown have not been tested and no guarantee as to their operability or efficiency can be given.
Made with Metropix ©2024

These particulars, whilst believed to be accurate are set out as a general outline only for guidance and do not constitute any part of an offer or contract. Intending purchasers should not rely on them as statements of representation of fact, but must satisfy themselves by inspection or otherwise as to their accuracy. No person in this firms employment has the authority to make or give any representation or warranty in respect of the property.

Energy Efficiency Rating		
	Current	Potential
Very energy efficient - lower running costs		
(92 plus) A		
(81-91) B		
(69-80) C		
(55-68) D		
(39-54) E		
(21-38) F		
(1-20) G		
Not energy efficient - higher running costs		
England & Wales		EU Directive 2002/91/EC 